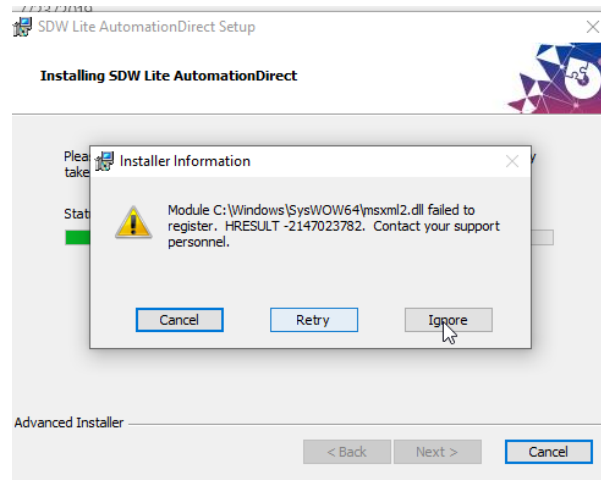


WEG SDW Soft starter selection tool – Installation Instructions

SDW is a software package to assist in the proper sizing of WEG SSW05 and SSW07 soft starters. Please use the following instructions to install the software on your Windows laptop.

1. Please download the Zip folder “SDW-Lite-ADC” and unzip it.
2. Run the “SDW-Lite-ADC” exe file from the Unzipped folder. If you get any error message, click on “Run Anyway” or “Ignore”



3. Open folder “SDW CD” from C/Program files(x86) and click the file with name “SDW_CD” to start the application.