



This file documents the list of new features, enhancements, and “adjusted anomalies”, starting with the most recent Rel 2.6.2/2.6.1 version (2.6.2 specific entries are noted), followed by the 2.5.x, 2.3, 2.2, 2.1.x, and finishing with Rel 2.0 version. Each page’s header shows the version for that current page.

**1. New 16 Channel Analog Input and Combo Analog modules for the BRX I/O Platform**

*(these modules require Do-more Technology Version 2.6)*

BX-16AD-1	BRX analog input module, <b>16-channel</b> , current, input current signal range(s) of 0-20 mA, 4-20 mA, external 24 VDC required
BX-16AD-2B	BRX analog input module, <b>16-channel</b> , voltage, input voltage signal range(s) of 0-5 VDC, 0-10 VDC, +/- 5 VDC, +/- 10 VDC, external 24 VDC required
BX-4AD2DA-1	BRX analog <b>combo</b> module, Input: 4-channel, current, 0-20 mA and 4-20 mA, Output: 2-channel, current, 0-20 mA and 4-20 mA
BX-2AD2DA-1	BRX analog <b>combo</b> module, Input: 2-channel, current, 0-20 mA and 4-20 mA, Output: 2-channel, current, 0-20 mA and 4-20 mA
BX-4AD2DA-2B	BRX analog <b>combo</b> module, Input: 4-channel, voltage, 0-5 VDC, 0-10 VDC, +/- 5 VDC and +/- 10 VDC, Output: 2-channel, voltage, 0-5 VDC, 0-10 VDC, +/- 5 VDC and +/- 10 VDC
BX-2AD2DA-2B	BRX analog <b>combo</b> module, Input: 2-channel, voltage, 0-5 VDC, 0-10 VDC, +/- 5 VDC and +/- 10 VDC, Output: 2-channel, voltage, 0-5 VDC, 0-10 VDC, +/- 5 VDC and +/- 10 VDC
BX-4RTD4DA-1	BRX <b>temperature combo</b> module, Input: 4-channel, RTD, input RTD type(s): Pt100, Pt1000, JPt100, Cu10, Cu25 and Ni120, Output: 4-channel, current, 0-20 mA and 4-20 mA. (1) BX-RTB10 screw terminal block kit included
BX-4THM4DA-1	BRX <b>temperature combo</b> module, Input: 4-channel, thermocouple, input thermocouple type(s): J, E, K, R, S, T, B, N, C, Output: 4-channel, current, 0-20 mA and 4-20 mA. (1) BX-RTB10 screw terminal block kit included

**2. The PC based Simulator now simulates any PLC Offline Project (BRX, 205, Terminator)**

When you do not have hardware available, the Do-more Simulator now accepts any Do-more project file, whether it’s BRX, 205, or Terminator. After opening/creating a disk project, just click the Simulator button in the Online toolbar and the Simulator will launch with the current project loaded in the Sim.

3. New Instructions

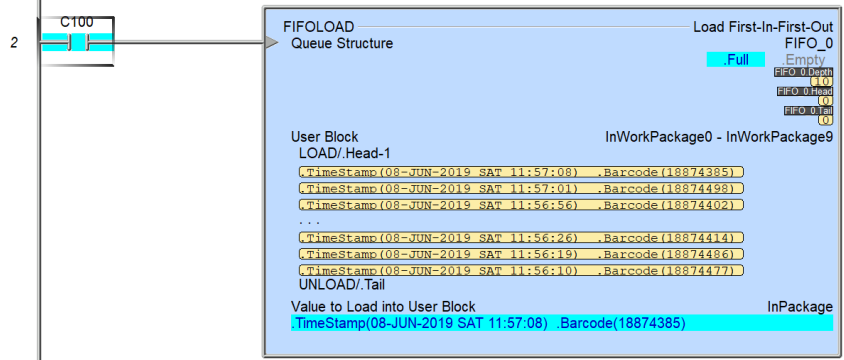
(these require Do-more Technology Version 2.6)

a. FIFO/LIFO Queuing (Misc./Data Manipulation group) available on all Do-more platforms: FIFOLOAD, FIFOUNLOAD, FIFORESET, and LIFOLOAD, LIFOUNLOAD, LIFORESET

i. FIFOLOAD – Load First-In-First-Out

Loads a Numeric, String, Structure, or UDT value (InPackage) at the Head index of a matching data block (InWork), and the Head is adjusted accordingly.

Note how the value in InPackage is now at the previous Head of the InWork block.

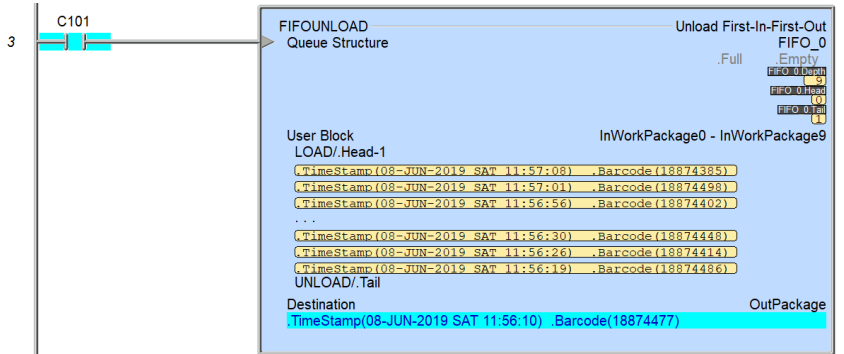


When the corresponding FIFOUNLOAD occurs, it removes the FIRST value that was loaded using FIFOLOAD, which is located at the Tail index of the data block.

In this example, InPackage is a heap element and InWork is a data block of size 10 of a User Data Type (UDT) PackageStruct that contains 2 fields, .TimeStamp (based on DST22 \$LocalTime, 1970 Epoch DWORD value) and .Barcode.

ii. FIFOUNLOAD – Unload First-In-First-Out

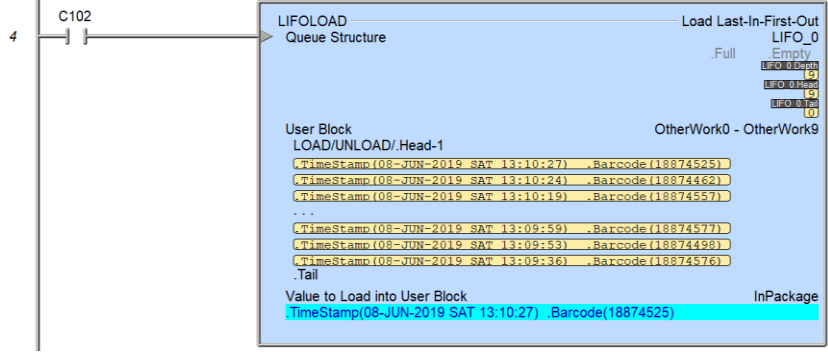
Unloads the Numeric, String, Structure, or UDT value at the Tail of the FIFO data block InWork and copies it into to the Destination parameter OutPackage. The Tail is adjusted accordingly.



Note how the value at the Tail in FIFOLOAD above is now in the Destination OutPackage in FIFOUNLOAD here. The Tail now references the element before the old Tail above in the InWork data block.

iii. LIFOLOAD – Load Last-In-First-Out

Loads a Numeric, String, Structure, or UDT value (InPackage) at the Head index of a matching data block (OtherWork), and the Head is adjusted accordingly.

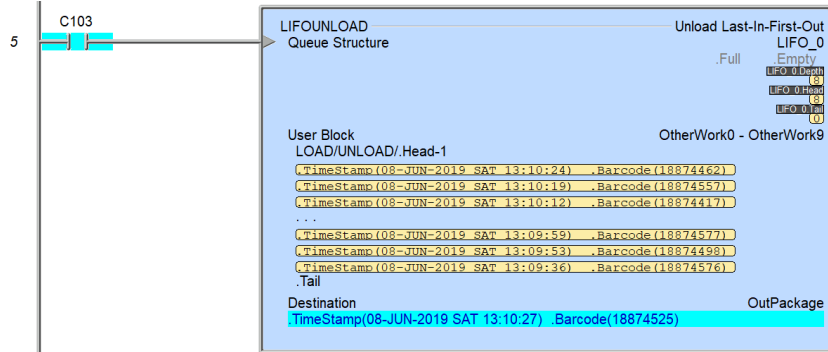


Note how the value in InPackage is now at the previous Head of the OtherWork block.

When the corresponding LIFOUNLOAD occurs, it removes the LAST value that was loaded using LIFOLOAD, which is located at the previous Head index of the data block.

iv. LIFOUNLOAD – Unload Last-In-First-Out

Unloads the Numeric, String, Structure, or UDT value at the previous Head of the LIFO data block OtherWork and copies it into to the Destination parameter OutPackage. The Head is adjusted accordingly.



Note how the value at the previous Head in LIFOLOAD above is now in the Destination OutPackage in LIFOUNLOAD here. The previous Head now references the element before the old previous Head above in the OtherWork data block. Note that the Tail is not adjusted by LIFOUNLOAD.

4. Instruction Toolbox supports 3 additional Instruction Subsets

**All**

**Subset 1  
defaults to  
basic Core ladder  
instructions**

**Subset 2  
defaults to basic  
Communication  
instructions**

**Subset 3  
defaults to  
basic Process  
instructions**

Subsets are all **user definable**, so mix and match instructions for 3 different custom toolboxes! Just click on one of the Subset button dropdown arrows to customize. These settings are saved and migrated to new installations of Designer. **Just click on a toolbox subset, then Drag-n-Drop!**

Also, the Instruction Toolbox groups can auto-collapse (original behavior) or **independently expand/collapse** by toggling the Auto-Collapse sticky button at the end of the toolbar at the top of the Instruction Toolbox. In the example in the first column above, the Auto-Collapse sticky button is pressed IN, so it is in Auto-Collapse mode. In the other 3 examples, the Auto-Collapse sticky button is pressed OUT, so Auto-Collapse is DISABLED, allowing you to EXPAND every group.

5. Enhancements

- a. For **BRX Local I/O Configuration Mode**, added a 2<sup>nd</sup> Manual mode to support a more forgiving I/O Configuration mis-match, where you can specify that **EVERY local expansion module is “optional”** (but if module DOES exist, it MUST match the Manual configuration).
- b. Added support for setting **DNS** in **SETUPIP** instruction (2.6.2; 6312; requires DmT 2.6.2; thanks to SM).
- c. Added support for **MQTT Client-ID** string to **DEVREAD** and **DEVWRITE** instructions (2.6.2; requires DmT 2.6.2).
- d. **MQTTPUB** and **MQTTSUB** support sending/receiving **numeric/bit element data as TEXT**. Ladder program no longer needs to use STRPRINT, STR2INT, and/or STR2REAL to generate/parse the text (6245). Edge-triggered **MQTTPUB** works properly in firmware 2.5.x or 2.6.1 (2.6.2).
- e. **AXJOG – Axis Jog Mode** lets you **supersede** the default Acceleration and Deceleration properties.
- f. **PID – Closed Loop Controller** instruction editor spells out the **important PID structure fields** (6111); added OK/Cancel Help(F1) buttons (6026); also added option to **Clamp Bias at 100%** (requires DmT 2.6).
- g. The **history of ALL PID Loop Tuning across ALL projects**, whether by Auto Tune or using the PID View to write the loop’s Gain/Reset/Rate/Sample Time tuning parameters, is now logged to a Comma Separated Variable file (.csv) in the Public Document Do-more Designer’s bin folder in the file PID.CSV (5325). For example,

C:\Users\Public\Documents\Do-more\Designer2\_6\Bin\PID.CSV with contents:

1	2	3	4	5	6	7	8	9	10	11	12
1	Loop Name	Date	Time	Source	Gain (P)	Reset (I)	Rate (D)	Sample Time (msec)	Sample Time (HH:MM:SS.mmm)	Project Name	User Name
2	SimPID	05/16/19	15:14:09	Initial Values	0.99	8.627	0	259	0.259s	PID1	Default User
3	SimPID	05/16/19	15:15:12	Auto-Tune Closed/DB 0.1%	0.985	8.313	0	249	0.249s	PID1	Default User
4											
5											

- h. The **PID Recent Tuning History** dialog has a button to open the folder of the PID.CSV **tuning history** file discussed in the previous item (5325).
- i. Changed Resource # field in the **INTCFG – Configure Interrupt** instruction editor from a numeric editor to a drop down list box (6199).
- j. **Smarter mouse wheel scrolling in Ladder View** such that tall instructions don’t scroll by (6234).
- k. **Instruction Toolbox** can now **independently expand/collapse Instruction Groups, or Auto-Collapse Groups as you click on them** (6269, thanks to MN). **Just toggle the Auto-Collapse sticky button** on the Instruction Toolbox toolbar. Expanding all Groups is very helpful when utilizing the new Instruction Toolbox Subsets (see #4 above).
- l. **DEL** key in **Ladder View** now leaves a horizontal wire instead of empty cell (2.6.2). When **Deleting a Rung**, message box now has a **“Don’t Ask Again” checkbox** (2.6.2; 6318, thanks to AS). When Deleting a Rung via **Context Menu Delete Rung** menu item, **maintain the block cursor position** (2.6.2, 6317, thanks to AS).

### Do-more Updates Rel 2.6.2, August 12, 2019

- m. **Program Check** now posts the reminder about *how to ignore program check rules* at the TOP of the Output Window, not the BOTTOM.
- n. Added **Find All hot key (Ctrl+Shift+Y)** and **Search->Find All** menu item to perform a Find All operation on the current view's current element. This works great from Documentation Editor or Data View, along with Ladder View. Whatever Element field has focus, simply hitting Ctrl+Shift+Y will find all of the references of that element in your Ladder Logic and list them out to the Find Results 1 window. Simply double-click on the entries in the Find Results window to navigate to that specific instruction parameter where the element is used (5515, thanks to MN).
- o. Added **Session Count** to **Dashboard** view's Communications Panel, i.e. how many users or other PLCs are connected to THAT PLC utilizing Do-more session-based protocol (5886). Possible clients that could bump the Session Count value include: HMI's, other Do-more PLCs using RX/WX instructions, other Do-more Designer programming sessions, etc.
- p. **Pre-fill** the **Documentation Editor** with all **physical I/O points** in the system to make it easy to fill out the element documentation for all the I/O (5916).
- q. **Easily open the Documentation Editor to a specific I/O Module's** set of I/O from the Dashboard by left clicking on the specific module and selecting the Edit I/O Documentation menu item (5916).
- r. **Setup Offline** dialog provides all the **hardware specification details** similar to the New Offline Project dialog (5631).
- s. **Force dialog** now sets the initial focus on the VALUE field rather than the ELEMENT field when the ELEMENT is initially provided like after right clicking on an element in the Ladder View and selecting Force menu item to force THAT element (5888).
- t. **Check for Updates** now prompts you to "Open the Download Folder?" after a successful download of the Designer installation program so that you could then right-click on the Setup EXE in Windows Explorer and "Run as Administrator" (5917).
- u. Added buttons to the **Do-more Technology Version** and the **Upgrade Firmware** dialog boxes that take you to the **help topic** that points out the **major feature set** for THAT specific Do-more Technology Version (5350).
- v. **Trend View** snapshot dialog points out that it is **resizable** (6108). Resizing the dialog is necessary when the element names are long because the value column could get clipped.
- w. When creating a new **Memory View**, it pre-selects the fields with the last block/range that was used (5589).
- x. **Edit User Data Type Definition** dialog supports the **DEL key** to delete the current field (6035, thanks to JW).
- y. Added a **drop-down list** at the end of the main window list that makes it easy to select which code-block or main window you want to view.
- z. When there is a **failure to connect** to the PLC, **provides options** to modify the connection parameters, or an option disassociate a project file with a specific connection (6062).
- aa. Added **Windows Command Prompt** to Launch Pad's Applications panel (5506).

**Do-more Updates Rel 2.6.2, August 12, 2019**

- bb. When a **dump file** is created, message box now recommends that the customer email the .dmp file to Host Engineering.
- cc. Bumped Designer Installation Live Update TCP timeout to be more tolerant (2.6.2).

## 6. Anomalies

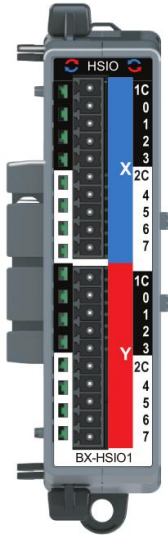
- a. Ladder View - after adding a new code-block from within an instruction editor (such as a Task from ENTASK, Subroutine from CALL, or ISR from AXSCRIPT), the current Ladder View stays on the original instruction editor's code-block, not the newly created code block (6192).
- b. Ladder View - added support for Element Browser (F9) in a few instruction fields where it was missing.
- c. Ladder View – Device instruction editor - hitting F9 on the Stage Bit On Success/On Error field properly brings up the Element Browser/Picker (6236, thanks to JW).
- d. Ladder View – The pop-up instruction help properly informs how to disable the pop-up based on its context (Ladder View, Instruction Toolbox, Instruction Palette) (6217, thanks to AA, KR).
- e. Ladder View – Reworded AXRSTFAULT description to Reset Axis Fault, also updated its Help text.
- f. Ladder View - Print handles printing tall instructions that do not fit on a single page (6205).
- g. Ladder View - Enlarged the Replace and multiple Replace List boxes in the Replace dialog box to accommodate long element names (6210).
- h. System Configuration – ensure device configurations are properly aligned.
- i. Trend View - when a Trend View's layout is saved as part of a project file's workspace, every individual elements' Trend Buffer Size in Megabytes is saved and then restored later when the project file is re-opened (6076, thanks to GD).
- j. Trend View - Symbolic Constants properly show up (6248).
- k. Memory View - when initiating a numeric edit from the Memory View, automatically select the entire field so that you can easily replace the current value with another value by simply typing the new number (6216).
- l. Element Browser - behaves properly when entering a long nickname for a new element but where that nickname is also assigned to an unassigned nickname or symbolic constant (6284, thanks to AS).
- m. Import Documentation – EXPLICIT nicknames for bit/numeric casts or structure members can be imported when there is an IMPLICIT nickname for any bit/numeric casts or structure members based on a nickname for the root element of the cast/structure (6293, thanks to GD).
- n. Properly handle a File Association is defined for .dmd file extension (6092, thanks to SB).
- o. System Configuration – I/O Configuration Analog Scaling, adjusted scaling display (2.6.2); BRX Thermocouple Modules - corrected the default scaling ranges for JPt100 vs. Pt100 (2.6.2); properly named Ni120 type.
- p. BRX-M module MPU firmware properly handles Time based interrupts (2.6.2).
- q. Update Firmware OS/GA dialogs ensure source file is for the target hardware (2.6.2).
- r. Ladder View – LERP instruction editor's import table reports "open file" issues (2.6.2).
- s. Dashboard – Displays correct BX power-budget based on MPU model (2.6.2).



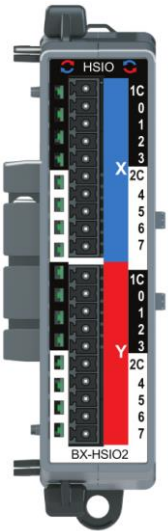
1. **New BX-HSIO and BX-SERIO modules for the BRX I/O Platform**

(these modules require Do-more Technology Version 2.5, and BRX Gate Array version 1.10)

a. **BX-HSIO1 and BX-HSIO2 have all the High-Speed features of the on-board I/O**



BX-HSIO1  
Sinking Y's



BX-HSIO2  
Sourcing Y's

**Input Functions**

- **High Speed Counting** - Step/Direction, Clock-wise/Counter-clock-wise, Quadrature with position scaling, frequency measurement
- **High Speed Timing** – measure time across various single edge or dual edge input events
- **Interrupts** – trigger Interrupt Service Routine based on Discrete Event, Microsecond Timer, Match Register on any Axis/High Speed Counter/Timer accumulator
- **Pulse Catch** – capture a narrow positive or negative pulse on an input so “normal” logic can see it

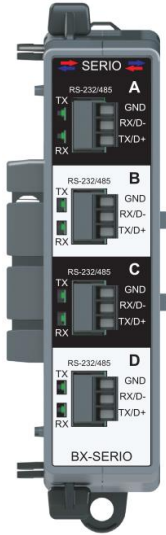
**Output Functions**

- **Axis Motion** (Drive as Step/Direction, Clock-wise/Counter-clock-wise, Quadrature emulation) using AX\* instructions (AXJOG, AXHOME, AXPOSTRAP, AXPOSSCRV, AXVEL, AXGEAR, AXFOLLOW, AXCAM, AXSCRIPT, et.al.); **up to 4 Axis** (1 virtual, 3 tied to actual output pairs)
- **Pulse Width Modulation** configured via the PWM structure members .Period and .DutyCycle or the PWMOUT instruction
- **Table Driven Output** using TDO\* instructions (Programmable Limit Switch; Preset Table script of various Set, Reset, Toggle, Pulse On, Pulse Off after micro-second duration, trigger Interrupt Service Routine)

**General**

- 8 High Speed Discrete Inputs
- 8 High Speed Discrete Outputs
- 4 High Speed Timer Interrupt Triggers
- 4 Discrete Input Event Interrupt Triggers
- 4 Match Register Interrupt Triggers
- **Up to 8 BX-HSIO modules per BRX PLC**, so multiply the numbers above by 8 for PLC capability!

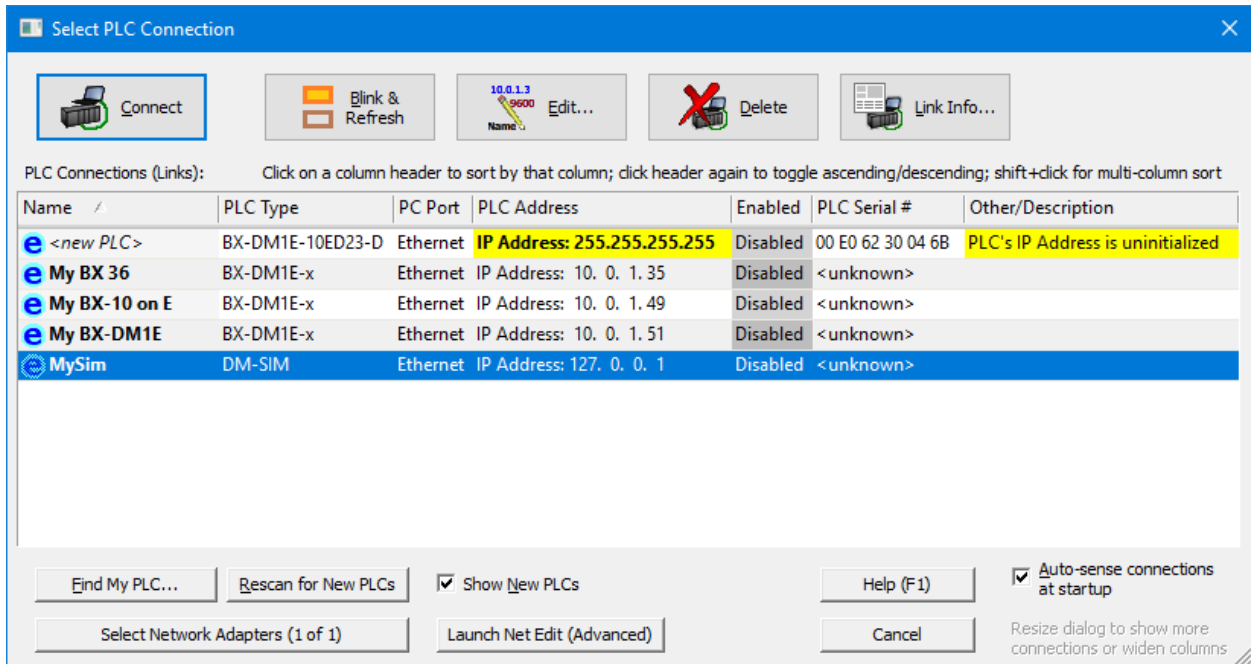
**b. BX-SERIO has 4 Serial Ports with all the protocols, plus DM512!**



- Four RS-232/RS-485 Serial Ports
- Isolated serial port that can communicate via RS-232 or RS-485 (software selectable). Includes ESD protection and built-in surge protection.
- Protocols: Do-more!™ Protocol (Slave)(Default), Modbus RTU (Master/Slave), **DMX512** (Master/Slave), K-Sequence (Slave), ASCII/Custom (In/Out)
- Baud Rates: 115200, 57600, 38400, 19200, 9600, 4800, 2400, 1200

**2. Easily Connect to your PLC**

The new *Connect to PLC* dialog simplifies the steps to establish a connection to a new or an existing PLC. By default, the dialog box shows new PLCs at the top of the list:



Just double-click on any existing or new PLC Connection. Hitting the *Blink/Refresh* button at the top can help identify the selected PLC by flashing the CPU's LED. The PLC's Serial # and Model # are also updated to help identify your specific PLC, which are labeled on the CPU/MPU.

If a new PLC is found over Ethernet, Designer will also help you set up a valid IP Address configuration without having to use the NetEdit utility.

### 3. New Instructions

(these require Do-more Technology Version 2.5)

#### a. AXSCRIPT – Run a Sequence of Axis Commands (BRX only)

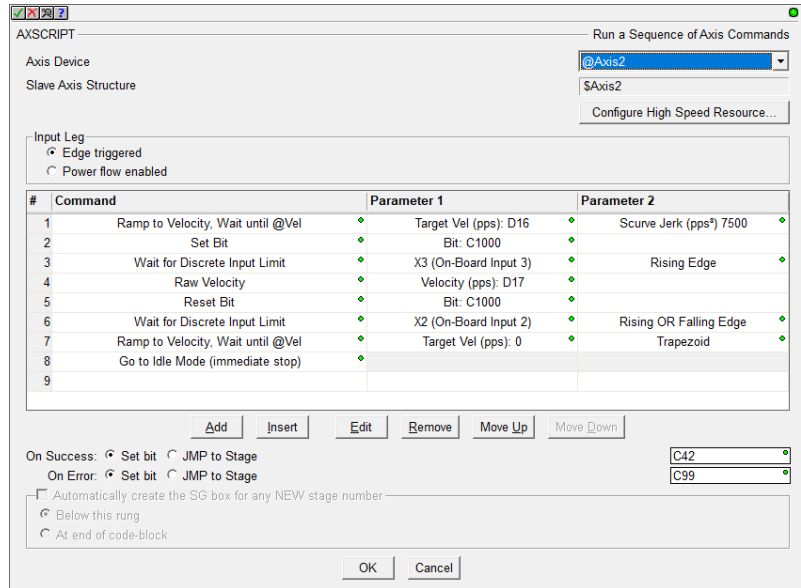
Create simple to complex **motion profiles** using an easy to use scripting editor with intelligent boiler plate editing for all of the various script commands.

The commands are categorized into functional groups:

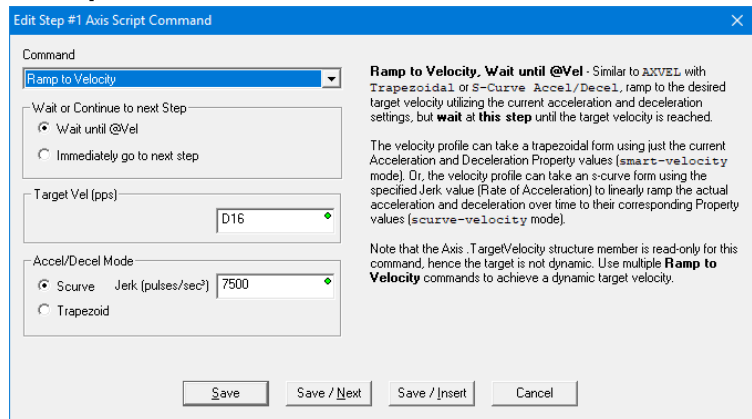
- Velocity
  - Position
  - Rotary
  - Follower
  - Wait for Event
  - Ladder Operation
  - Looping
- and more.

For example, choosing the *Ramp to Velocity* script command under the Velocity group gives you the options and parameters for that specific command:

- Waiting until @Velocity vs. Continuing on to the next step
- Target Velocity value (constant or variable)
- Choosing an S-curve vs. Trapezoidal velocity profile



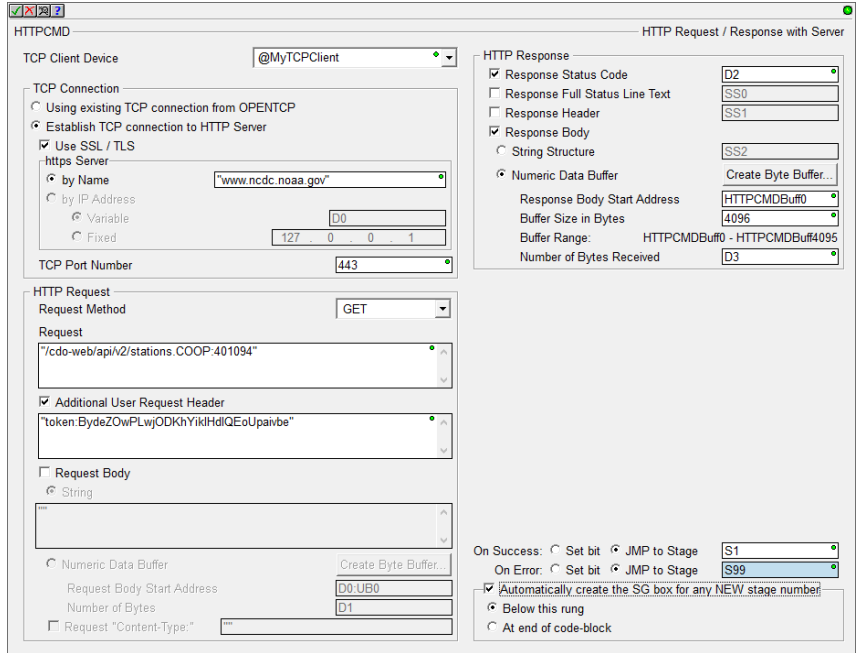
#### Example AXSCRIPT Command Editor



**b. HTTPCMD – HTTP Request / Response with Server (BRX only)**

Using the BRX PLC as an http/https client, send a **GET, POST, PUT, HEAD,** or **DELETE** request to a server, and receive the response.

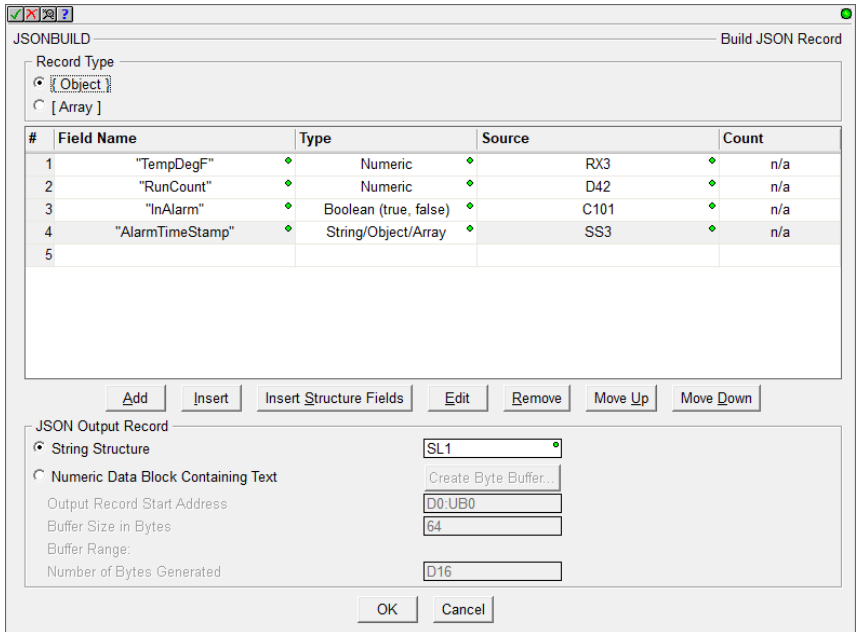
Along with the new JSONPARSE and JSONBUILD instructions (see below), HTTPCMD can provide a useful interface between your PLC and data-rich services utilizing **REST APIs**.



**c. JSONBUILD – Build JSON Record (BRX only)**

Generate a JSON record consisting of multiple fields or multiple array entries.

Use multiple JSONBUILD instructions to create nested complex JSON record structures. For example, the “AlarmTimeStamp” field value is itself a JSON object record in SS3, which contains the output of a previous JSONBUILD generated from \$Now Date/Time structure’s field/value pairs.



Easily create JSON record reports of your **User Data Type** structures’ fields by clicking the **Insert Structure Fields** button from the editor. Works w/built-in structures like Date/Time also.

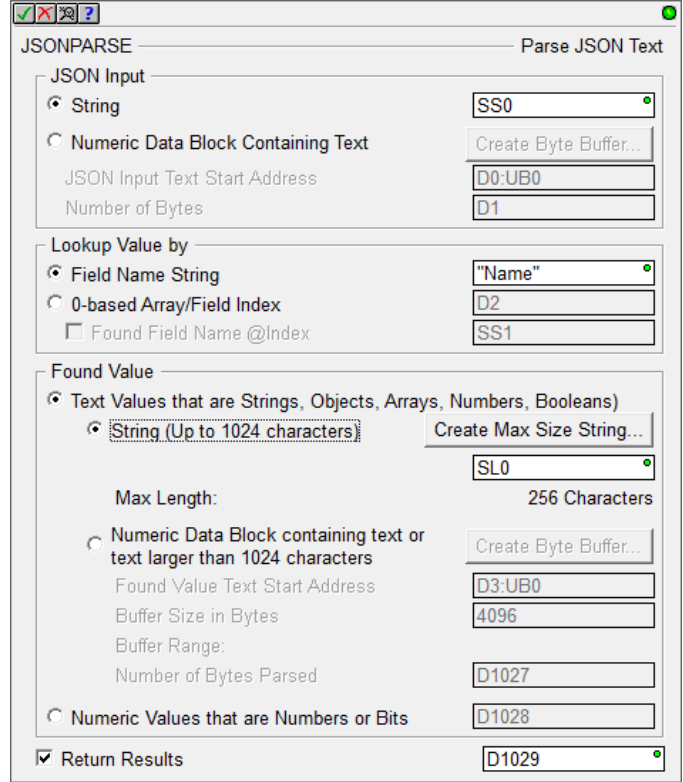
**d. JSONPARSE – Parse JSON Text (BRX only)**

Sometimes data **received** via **MQTT** or **HTTP REST APIs** can come in JSON format. The Parse JSON Text instruction looks up a value based on a **Field Name** or a **0-based array index** within a JSON Input record.

The Found Value can be returned as text or as Numeric or Bit values, depending upon the JSON record format.

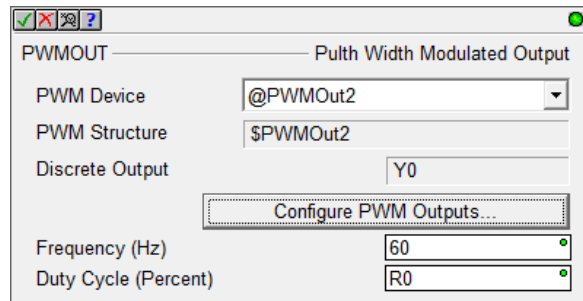
The Return Results DWORD contains details about the result of the parse:

- any JSON parsing errors
- if no parsing error, information on the JSON Input, whether it was an object, array, or value
- if no parsing error, information on the Found Value type, whether it was a nested object, an array, a number, a quoted string, or one of the predefined null, false, true values



**e. PWMOUT – Pulse Width Modulated Output (BRX only)**

Control one of the Pulse Width Modulated **high speed** discrete outputs on a BRX PLC with simple *Frequency* value in Hz, and *Duty Cycle* as a percentage. In this example, the R0 Duty Cycle input parameter value is expected to be 0.0 to 100.0. It does this by manipulating the values in the PWM's associated structure \$PWMOut2.



The BRX PWM Output functionality is implemented at the **hardware level**, so it can generate precise pulses **completely asynchronous** to the PLC scan's timing.

**4. New System Status Elements:**

ST155	\$IsrOverload1	see Help Topic DMD0208
DST59	\$DNSAddress	<i>System Nickname Locations</i>

5. Enhancements

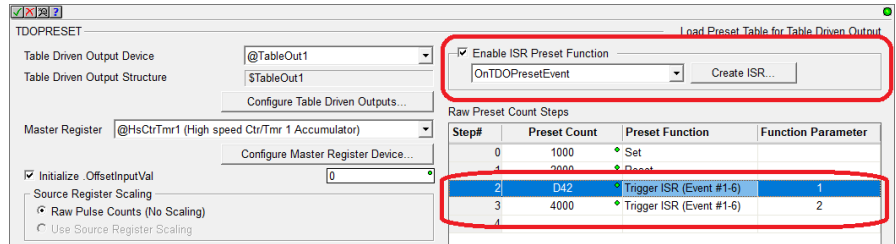
a. BRX MQTT Client expanded to include MQTTS, QoS 1, and Persistent Session Type

The previous version only supported unsecured MQTT, using QoS Level 0 (At Most Once), with Clean session type. BRX Do-more Technology Version 2.5 adds support for:

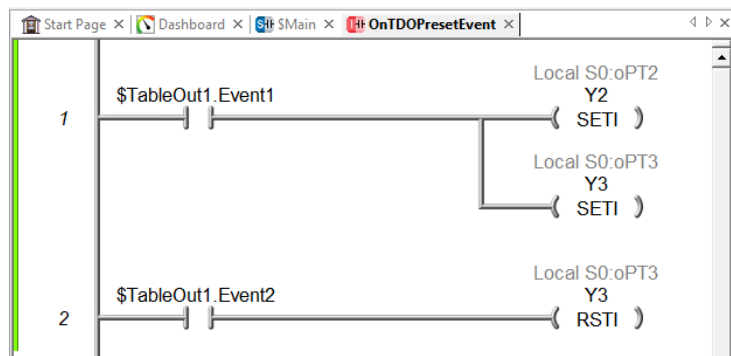
- MQTTS using secured TLS / SSL encryption, port 8883
- QoS Level 1 (At Least Once)
- Persistent Session (Subscriptions and their QoS state are maintained)

b. BRX TDOPRESET supports Triggering Interrupt Service Routines

As of Do-more Technology Version 2.5, TDOPRESET now supports triggering an Interrupt Service Routine (ISR) on a Preset Count event.



Select one of 6 possible events as the Preset Function Parameter, then utilize the TDO structure's event bit inside the ISR to Set Immediate or Reset an Immediate Output or whatever you want.



In the TDOPRESET example above, when the \$HsCtrTmr1 High Speed Counter accumulator reaches the value in D42 in Step #2, we want to immediately set multiple high speed outputs (Y2 and Y3). We can do this by triggering the selected ISR (OnTDOPresetEvent) along with setting Event 1 bit in the \$TableOut1 structure.

Then in the OnTDOPresetEvent ISR code-block, have ladder logic that does a SETI on Y2 and Y3 when \$TableOut1.Event1 is ON. We also have logic in the ISR to turn Y3 OFF when Event #2 is on (this is the desired behavior for Step #3 in the TDOPRESET table at count 4000).

If you are familiar with the DirectLOGIC 06 PLC High Speed I/O features, the BRX High Speed I/O' Table Driven Output and High Speed Counter/Timer functionality are similar to the **DL 06's Mode 10 High-Speed Counter** behavior.

c. AXSCRIPT editor supports Import/Export scripts as text files

To see some sample scripts for some common motion profiles, hit the **Import** button in the AXSCRIPT editor and look below the Projects\Examples\AXSCRIPT folder.

Use **Export** to share common AXSCRIPTs across projects, or even create your own in Notepad (it's just text).



d. BRX Axis structure has 3 new AXSCRIPT related fields

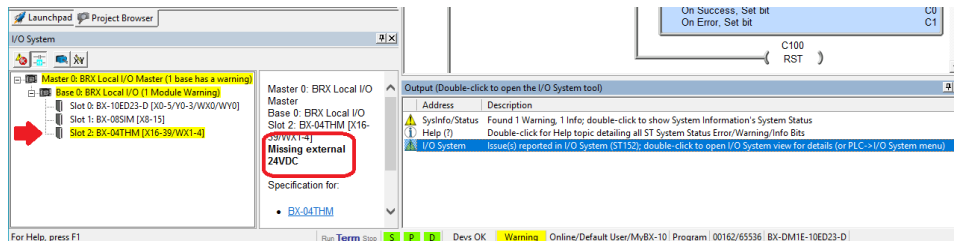
- **.ScriptStep** (Signed BYTE) – read-only current AXSCRIPT step number (-1 when complete)
- **.Timer** (Signed DWORD) – when using the Start Timer command, this is the timer current value (in milliseconds); Timers time down, so this value will be 0 when the timer finishes; it is writable, so Ladder Logic can tweak this value
- **.Counter** (Signed DWORD) – when using a For/Next loop in AXSCRIPT, this is the current count value; For/Next loops count down, so this will equal 0 when the For/Next loop finishes; it is writable, so Ladder Logic can tweak this value

e. Upon connecting to a PLC, point out any issues

After connecting to a PLC, if **any Errors/Warnings/Information System Status ST bits are ON**, those get reported to the **Output Window** (see example below). **Double-clicking** on that entry in the Output Window will launch the **System Information dialog** on the System Status tab, detailing all the Errors/Warnings/Info ST bits. There's also an item in the Output Window to launch the Help topic that describes all of the ST System Status bits.

For example, after connecting to your PLC, when there is a \$DriverError (ST143, when a device driver reports an issue), those two items get reported to your Output Window. When you double click on the Error/Warning/Information item, it will bring up the System Status tab of the System Information dialog, detailing the last 8 issues (which specific device instruction, etc.).

Also, when the \$IOError System Status bit is ON (ST152), that gets reported separately to the Output Window. **Double-clicking** on that entry will bring up the **I/O System** tool, detailing the first Master/Base/Slot that is reporting an issue. Just click on any other module in the I/O System tree to see that module's issue(s) in the I/O System view's Detail panel (6148).



f. Cross Reference View – added Rung Number column (2798)

Element	Extended Info	Access Type	Code Block	Rung	Address	Instruction	Parameter Info
C0 JogSimRS leading edge		Input	\$Main	#2	@18	STR	
C1 PauseSimRS		Input	\$Main	#2	@19	STR	
C2 LogDone on Success or on Error		Input	GenAlarmText	#7	@84	ANDN	
		Output	GenAlarmText	#7	@97	STREAMOUT	Parm 8 : On Success
		Output	GenAlarmText	#7	@97	STREAMOUT	Parm 9 : On Error
		Input	GenAlarmText	#8	@105	STR	
		Output	GenAlarmText	#8	@106	RST	
R10 AdjustedRawPV We may want to filter WX0, maybe not (see X2). Regardless of that setting, R10 contains the "desired" raw analog value		In/Out	\$TopOfScan	#3	@14	FILTER	Parm 3 : Out
		Output	\$TopOfScan	#3	@19	MOVE	Parm 2 : Destination
		Input	\$Main	#1	@1	PID	Parm 3 : From Raw PV

g. BRX High Speed I/O – added **Pulse Catch** functionality; added **.Done** bit to **Table Output** structure to know when TDOPRESET has acted on all the steps in the table.

## Do-more Updates Rel 2.5.2, April 22, 2019

- h. **BX-HSIO module** - added support for the BX-HSIO module to the AX\* (Axis), TDO\* (Table Driven Output), and INT\* (Interrupt) instructions.
- i. **I/O Screw Head Identification** - to help **identify analog channels** on BRX I/O modules, the module's screw head labels are added to the I/O System View module information, and the implicit Extra Info fields for the WX/WY/RX/RV elements. For example, when reporting a Broken Transmitter on channel 3 of BRX Analog Module BX-04AD-1, the I/O System View identifies the screw head for that channel as terminal **I2** (Current terminal 2) (6098).
- j. **Differentiate MATH and Print Script field editors' background colors**

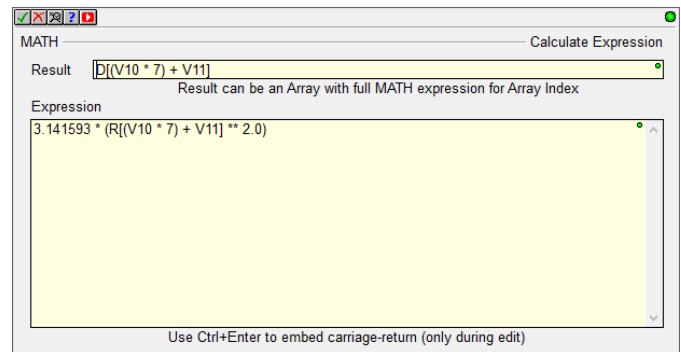
Both the Math Expression and Result edit fields can accept **complex mathematical expressions**. The Result field can accept an expression as a complex array index calculation (so can the Expression field's elements' array indexes).

MATH expression fields are differentiated from other fields with **light-yellow** background color:

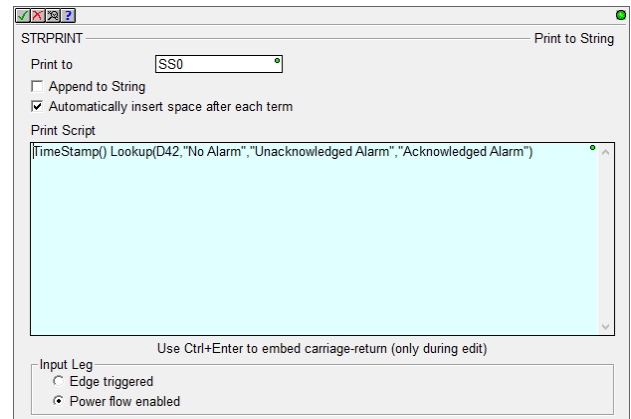
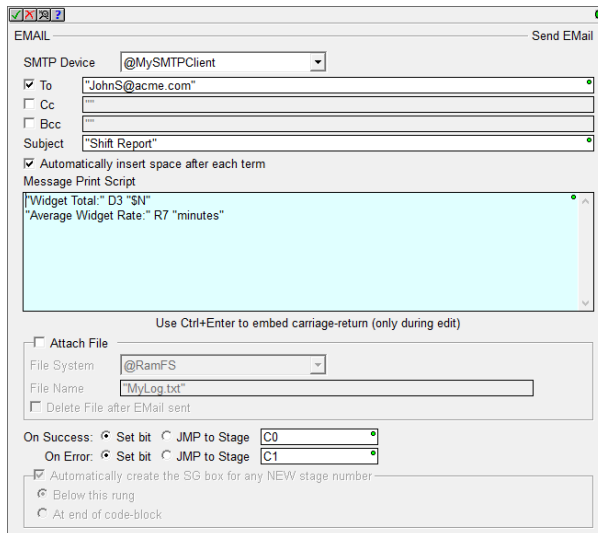
This example shows how to implement a two-dimensional array with 7 columns and a variable number of rows. V10 is the row# and V11 is the column # (0-based row / column indexes).

So V10 Row # goes from  $0..N_{rows}-1$ . V11 Column # goes from  $0..6$  ( $N_{cols}-1$ ).

This technique of implementing a multi-dimensional array is common in programming languages like C.



Print Script fields in the EMAIL and STRPRINT instruction editors are differentiated from other fields with a **light-cyan** background color:



See Help Topic **DMD0168 String Scripting Language Reference** for details about all the cool things you can do in a light-cyan field.



**Do-more Updates Rel 2.5.2, April 22, 2019**

- k. I/O System Tool** – provides detailed error information on BRX modules. See **PLC->I/O System** menu (6163).
- l. Memory View** – numeric data blocks now support **ASCII** and **Swapped ASCII display formats**, great when using large BYTE buffers in the new HTTPCMD, JSONPARSE, and JSONBUILD instructions (6109).
- m. Select Project Dialog** – added column for Last Saved date/time stamp of the .dmd project file (5893).
- n. Login Count Failure Dialog** – where an Administrator login would inform you of the number of failed login attempts, and let you clear it, has been moved to just a log entry to the Output Window. This entry tells you to double-click to clear the Login Failure Count (DST386). This will only show up if you logged in with Administrator privileges (PW Change Password), and the Login Failure Count was non-zero (6125, thanks to MHW).
- o. Program Check** – W241 warn when a BRX Slave Axis is not configured to be as fast as the Master Axis (slave has to be faster than the Master in order to “catch up” in AXFOLLOW, AXGEAR, AXCAM, and possibly in AXSCRIPT).

## 6. Anomalies

- a. Ladder View – AXCONFIG editor no longer flickers Encoder Deadband field.
- b. Ladder View – AXCAM, AXGEAR properly enables/disables non-Axis Master Filter Time.
- c. Ladder View – MQTTSUB properly validates Topic fields.
- d. Ladder View – AXHOME status adjusted.
- e. Ladder View – TDOPLS and TDOPRESET default for *Initialize .InputValOffset* with value of 0 is now checked for new instructions (6123).
- f. Ladder View – GSREGWR lets you write to parameter P9.31 (JOG) (6170).
- g. Ladder View – Instruction Editor's Secondary Edit dialogs properly show Element Picker.
- h. Ladder View – Ranged BYTE fields properly display simple case of when range equals 1 BYTE.
- i. Ladder View – MRX, MWX, DLRX, and DLWX instruction editors' Device combo box, when using up/down arrow keys to select a Serial or Ethernet Device, the Serial vs. Ethernet addressing groups are properly enabled/disabled (6173).
- j. Ladder View – Instruction's String Literal parameter editors, if string literal is valid except it is missing double-quotes, warn the user that double quotes will be automatically added to make it valid, instead of reporting it as an error (do what I mean, not what I say) in EMAIL, PID, DNSLOOKUP, SETUPNOD, ... If converting the text to a string literal is NOT what is wanted (e.g. fat-fingered a string element), simply do not accept the warning and return back to the instruction editor and adjust accordingly.
- k. Ladder View – String Literal parameter errors report proper field label.
- l. Ladder View – STRINSERT properly shows nickname for first parameter (6127).
- m. Ladder View – AXCONFIG no longer shows Pop-up Cross Reference for unused parameters (6110).
- n. Ladder View – AXFOLLOW properly handles the Non-Axis Master Filter Timer option (DM-470).
- o. Ladder View – AXHOME properly reports validity of Limit 2 (DM-462).
- p. Ladder View – properly report error when accepting a rung with a multiple input box that has another output instruction above it (6119).
- q. Ladder View – properly displays Delta Contact status with Stage Bit (5977).
- r. Ladder View – properly displays instructions with Edge Input legs on 2<sup>nd</sup> or 3<sup>rd</sup> input leg (5982).
- s. Ladder View – STGDIVERG/SGCONVRG status display properly shows stage list with wide nicknames or non-abbreviated stage elements with wide program names (6016).
- t. Ladder View – consistently displays abbreviated Stage Bits vs. Nicknames for Stage parameters.
- u. Ladder View – STREAMIN and FILEREAD properly display buffer Length parameter's nickname.
- v. Ladder View – Delete Rung operation properly enables the Save Project buttons (6149).

**Do-more Updates Rel 2.5.2, April 22, 2019**

- w. Ladder View – Element Editor – extended edit fields’ maximum widths to support longer element names (6161, thanks to JW).
- x. Ladder View – Print handles large boxes that do not fit on a page (DM-515, 2.5.2).
- y. Ladder View – Contact/Coil Editor edit field no longer clips graphic (6235, 2.5.2).
- z. Ladder View – TDOPRESET instruction editor’s Master Register combo box updates after configuring a Master Register (6191, 2.5.2).
- aa. Ladder View – MOVER and MEMCOPY instruction editor’s Count parameter properly support structure fields (6246, 2.5.2, thanks to JW).
- bb. Ladder View – on large instruction editors, properly lays out OK button and dialog size (6251, 2.5.2).
- cc. Ladder View – MATH Fraction function (FRAC) properly reports its return value as a REAL (thanks to ATU).
- dd. Status – User Data Type fields with *IP Address* or *Binary Display Formats* now display properly (6159, thanks to JW).
- ee. Dashboard – center 205 base displays (5787).
- ff. Dashboard – shows Unknown Module graphic when a new module shows up that an older version of Designer does not know about.
- gg. Dashboard – right clicking on a 205 or Terminator CPU when offline lets you change the PLC Type of your project (6044, 2.5.2, thanks to GLE).
- hh. System Configuration - I/O Configuration’s manual I/O mapping corrected.
- ii. System Configuration – BRX Pulse Width Modulation (PWM) configuration dialog points out the new PWMOUT instruction (see 2.e. New Instructions above); corrected the .Enable structure member reference to .EnableOutput; MQTT Client Last Will’s *Retain Topic* flag was not being stored in the System Configuration.
- jj. System Configuration, Memory Configuration dialog – changed *UDT* (User Data Type) tab to *Structs (Built-In/UDT)* since built-in structure layout information is also available, (although those are not editable, but UDTs are) (6053, 2.5.2).
- kk. System Configuration dialog – properly handles manually adding I/O modules with module configurations (DM-531, 2.5.2).
- ll. System Configuration – properly marked as *modified* after an inter-project paste or Insert Instructions from File operation (6250, 2.5.2).
- mm. I/O System View – application no longer “hangs” when I/O System View is initially launched behind other docked views (6243, 2.5.2).
- nn. I/O System View – now opens up showing the first Module/Base that has a fault, and collapses all other I/O Base tree nodes that do not have any faults to better diagnose I/O warnings and errors (6118).

**Do-more Updates Rel 2.5.2, April 22, 2019**

- oo. I/O System View – properly shows detailed warning/error information for BRX MPUs, DMIO, and EBC100 bases (6163); shows base part number for BX-DMIO-M and BX-EBC100-M slot 0 instead of “empty”; provides proper web links for the manual and specification sheets based on the part number. Properly shows detailed warning/error information for BRX MPUs (6189, 2.5.2)
- pp. Project Browser – code-block status properly works when scrolling the tree using the mouse wheel (6141, thanks to OHE).
- qq. Launch Pad Projects Panel and Select Projects dialog no longer check for existence of projects files on network UNC folders.
- rr. Cross Reference View – *Follow Ladder Cursor* mode works properly when you have multiple Ladder Views opened and navigating using the Cross Reference entries (6233, 2.5.2, thanks to JW).
- ss. PLC Menu – properly expands out (6114).
- tt. Select Project Dialog – when opening, utilizes a Wait Cursor while loading.
- uu. DirectLOGIC Migration Utility – properly launches DirectSOFT when it is installed in the Program Files folder (6178).
- vv. Element Edit Field – enhanced error reporting primarily helps instruction editor error reporting, but it also helps other dialog boxes that have element fields; show proper green/yellow/red indicator bulb (6179)
- ww. Heap Edit Fields – properly shows green/yellow/red bulb when user hits DELETE key while editing (thanks to AA).
- xx. Export Element Documentation/Element Classification – properly handles Static and Configurable Dynamic System Schemas.
- yy. Create Nickname properly handles selecting elements from the Auto-Complete list (6180).
- zz. Program Check – rule for reporting unknown module reports the module ID in hexadecimal.
- aaa. Error/Warning/Message dialog properly sets default button to Close.
- bbb. Instruction Popup Help – fixed lockup issue (6089, 6090).
- ccc. CTRIO Module Configuration properly handles Reset Counter option.
- ddd. Write to PLC dialog – no longer shows Memory Image details if the project does not contain any Memory Image Regions (6155).
- eee. System Information dialog – Event Log reporting the result of the operation to restore a project from SD card.
- fff. Browse PLC File System dialog – when reading a file from the PLC to the PC, properly reports error when destination file is already opened by another application. When this situation occurs, it points you to the temporary PC file to retrieve the contents (6244, 2.5.2, thanks to JW).
- ggg. Connect to PLC, New IP Settings dialog – no longer writes 0.0.0.0 as the IP Address after accepting a possible conflicting IP Address (6239, 2.5.2).

**Do-more Updates Rel 2.5.2, April 22, 2019**

hhh. Import AXSCRIPT dialog – when import line's AXSCRIPT command has the improper number of parameters, report the command's parameter signature (6214, 2.5.2).

**1. New BRX Remote Base Controllers: BX-DMIO, BX-EBC100, and BX-MBIO**

Each can support up to 8 BX I/O modules, so with the new 32 point BX I/O modules (see #2 below), each remote base can support up to 256 I/O points. One PLC can master up to 16 of these remote bases, so one PLC can add another 4096 BRX I/O points to its local I/O.



**BX-DMIO-M**



**BX-EBC100-M**



**BX-MBIO-M**

BX Remote I/O Controllers				
Part Number	External Power	Supported Protocols	Can Be Used With	Expansion Modules
<i><b>BX-DMIO-M</b></i>	120–240 VAC	Do-more! Ethernet Remote I/O	BX-DM1E MPUs H2-DM1E CPUs T1H-DM1E CPUs	8
<i><b>BX-DMIO-M-D</b></i>	12–24 VDC			
<i><b>BX-EBC100-M</b></i>	120–240 VAC	Do-more! Ethernet Remote I/O Host Ethernet Remote I/O Modbus TCP	BX-DM1E MPUs H2-DM1E CPUs T1H-DM1E CPUs H2-ERM100s H4-ERM100s	
<i><b>BX-EBC100-M-D</b></i>	12–24 VDC			
<i><b>BX-MBIO-M</b></i>	120–240 VAC	Modbus RTU Modbus TCP	Modbus RTU Master Modbus TCP Client	
<i><b>BX-MBIO-M-D</b></i>	12–24 VDC			

Requires Do-more Technology Version 2.3 (DmT 2.3); see PLC->Update Firmware.

**2. New BRX I/O Expansion Modules:**

Model Number	I/O Count	Description
BX-32ND3	32	Discrete Input 12-24 VDC Sink/Source
BX-32TD1	32	Discrete Output 12-24 VDC Sinking
BX-32TD2	32	Discrete Output 12-24 VDC Sourcing
BX-08SIM	8	Discrete <b>Input Simulator</b>
BX-04ADM-1	4	Analog Input, Current Sink, 4-20mA, 0-20mA, 14 bit resolution
BX-04AD-1	4	Analog Input, Current Sink, 4-20mA, 0-20mA, 16 bit resolution
BX-04AD-2B	4	Analog Input, Voltage, +/-10VDC, +/-5VDC, 0-5VDC, 0-10VDC, 16 bit
BX-06RTD	6	Analog Input, Temperature, <b>Resistance Temperature Detector</b>
BX-08NTC	8	Analog Input, Temperature, <b>Thermistor</b>
BX-08THM	8	Analog Input, Temperature, Thermocouple
BX-04DA-1	4	Analog Output, Current Source, 4-20mA, 0-20mA, 16 bit resolution
BX-04DA-2B	4	Analog Output, Voltage, +/-10VDC, +/-5VDC, 0-5VDC, 0-10VDC, 16 bit

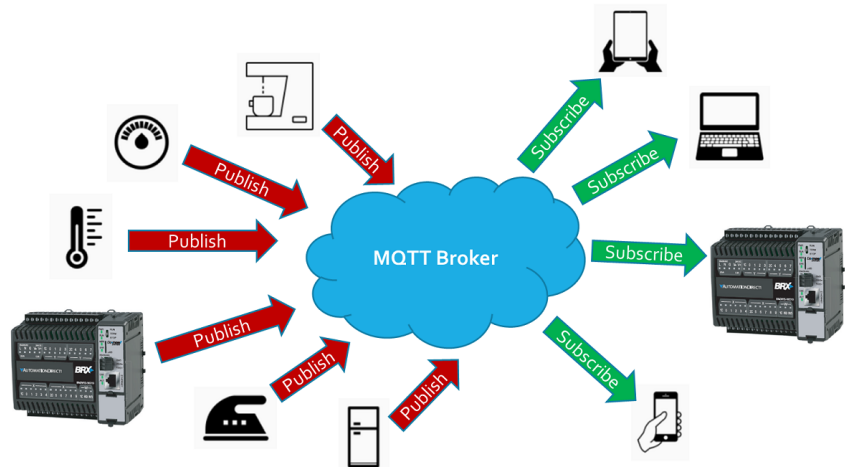
(requires DmT 2.3)

**3. IoT (Internet Of Things) MQTT Client Protocol (BRX PLC and Simulator only)**

**Publish** IoT Topic data to an MQTT Broker via the **MQTTPUB** instruction

**Subscribe** to an IoT Topic and receive updates from an MQTT Broker via the **MQTTSUB** instruction.

See New Instructions below for more details. Requires DmT 2.3.



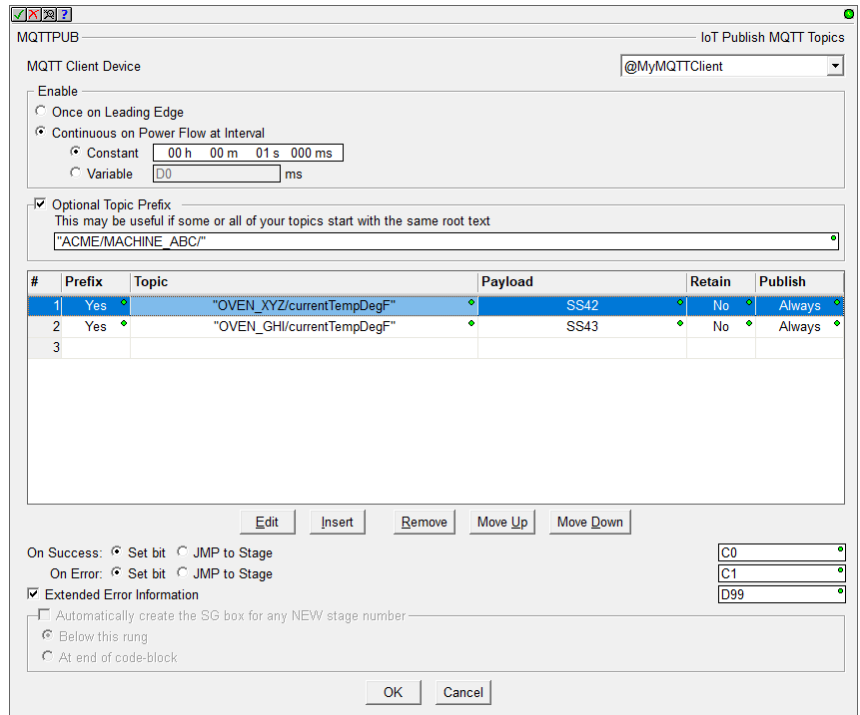
4. New Instructions

a. MQTTPUB - IoT Publish MQTT Topics (Protocol – Standard)

The MQTTPUB instruction can publish payloads of multiple topics at a desired time interval, or on an event-based edge trigger, to the MQTT Broker defined in your MQTT Client Device.

Each Topic's published Payload (data) can be set in a STRING buffer as text or as raw bytes (see STRPRINTF).

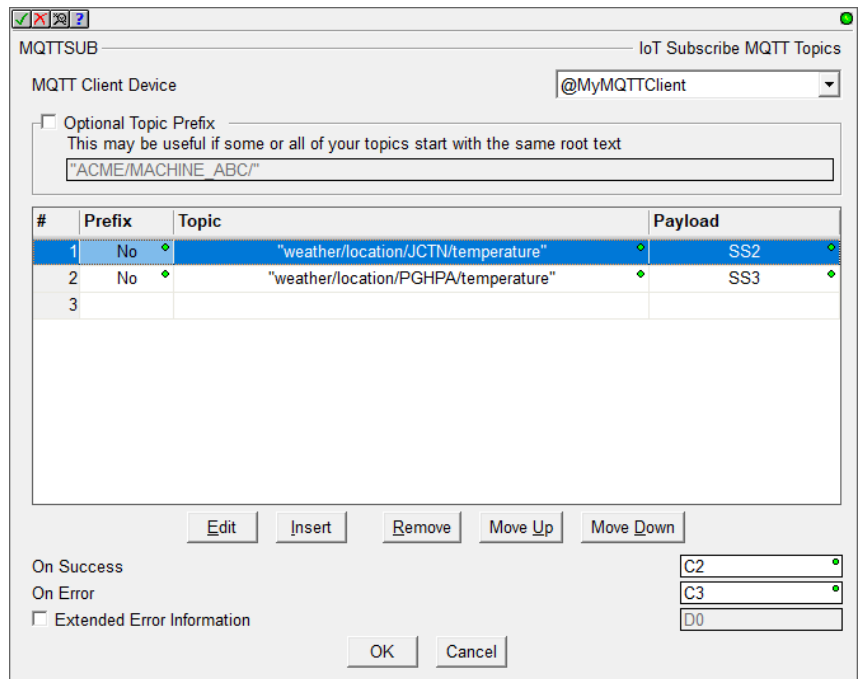
The Last Will & Testament (LWT) is set up in the MQTT Client Device. The LWT Topic or Payload can be changed via the DEVWRITE instruction.



b. MQTTSUB – IoT Subscribe MQTT Topics (Protocol – Standard)

The MQTTSUB instruction can subscribe to multiple Topics sourced by the MQTT Broker defined in your MQTT Client Device.

As long as instruction has power-flow, each Topic will receive fresh data Payload as the MQTT Broker publishes it. The Payload is written as a STRING data buffer. The contents of the STRING can then be processed in various ways based on the format of that specific Topic's Payload (see STR2INT, STR2REAL, STRGETB, etc.).



The two new MQTT Publish/Subscribe instructions support **detailed transaction logging** using DmLogger when you turn on ST36 \$EnableMsgDump status bit.



## 5. Enhancements

- c. Ladder View: MEMCOPY **warns when copying raw bytes** from/to structures to/from numeric data blocks, especially STRINGS (5979).
- d. Ladder View: INI – Immediate Input instruction editor smarter based on the BRX model's local discrete input count.
- e. Ladder View: DEVREAD and DEVWRITE instructions support the **new MQTT Client device configuration parameters**: Authentication Account User Name and Password, LW&T Topic and Payload, Server IP Address Name Port and Timeout.
- f. Memory View: **Status** can be turned OFF (5316).
- g. System Configuration Dialog: Added **right-click context menu** to Memory Configuration's **Edit User Data Type Definition dialog** to Add/Insert/Edit/Delete/... Fields in the UDT, and to the Memory Configuration's **User Data Type (UDT) tab** to Add/Edit/Delete/... UDTs (6029, thanks to JW).
- h. Motion: Improved Axis Instructions' **handling of Axis Devices** and other related Axis parameters (5983).
- i. Security: After the Administrator logs in, **report the number of Failed Logins** if any have occurred (this is maintained in DST386/\$FailedLoginCnt). Also, give the Administrator the option to reset it (5101).
- j. Project: If writing a Project to the PLC requires a mode change from Program to Run, and the new Project creates an issue where the PLC could not return to Run mode, **give the user options to make changes to their Project's System Configuration**, a probable place to correct any issues (4776).
- k. Project Files: Generates **Project and C-more export files automatically** whenever you Save a Project to Disk. These export files are also maintained as part of the Auto-Save and Backup facilities. The names of these export files are based on the project file name, and are created in the same folder as the project file. For example, if your project file was called MyProject.dmd, then the following 2 files will be generated whenever you save MyProject.dmd to disk: **MyProject\_EXPORT\_DMD.txt** and **MyProject\_EXPORT\_CMORE.txt** (5978).
- l. Modbus/TCP: Latest firmware for all EBC100 models (H2, T1H, and BX), GSEDRV100, BX-MBIO, and all ECOM100 models (H2 and H0) **lets you close Modbus/TCP Port 502**, but lets you configure other TCP ports for Modbus/TCP. Requires NetEdit version 3.16, which ships with Designer 2.3.
- m. Live Update: **At end of Live Update** of firmware, which downloads the latest and greatest firmware files from our web server, prompt the user to update the firmware in any of their hardware (5272).

## 6. Adjusted Anomalies

- n. Dashboard: When reporting the SMTP Server's address, report the Name instead of the IP Address if that is how it is configured.
- o. System Configuration: Properly handling multi-packet server credential verification for SMTP Client configuration.
- p. Ladder View: Status for DRUM instruction's Mask Element Name text displays correctly. Note: The STATUS display was always correct. What was corrected was the text for the Element Name (since the applied Mask element is indexed based on the step number, e.g. D100 when on step 1, D101 when on step 2, etc.) (6040).
- q. Ladder View: Properly displays word-wrapped script instructions as their width changes due to the width of other instructions in the output column (6055).
- r. Ladder View: When opening up a project file, properly handle when there are differences between the default zoom level vs. the workspace's zoom level of a specific view.
- s. Ladder View: Paste of AXCAM properly displays when the device parameter is an unassigned nickname (6057).
- t. Trend View/PID View Snapshot window properly displaying values to the configured number of decimal places (6054).
- u. Output Window: Paste Instruction properly maintains messages logged to the Output Window (5929).



## Changes in Do-more 2.2

1. Do-more Designer and its HAPTools now **install** to the **standard Window's Program Files folder**, instead of off the system root folder. The **Projects** folder is now located within the **Designer 2.2 folder below your PC's Public\Documents folder** (or **All User\Documents** in older Windows versions). Look for the **Do-more\Designer2\_2\...** subfolder hierarchy below those two different system folder locations. See *Open Designer 2.2 Folder from Launchpad view in Enhancements section below*.
2. Added support for the new **DURApulse GS4 Drives** (minimally requires Do-more Technology Version 2.2 (DmT 2.2), see PLC->Update Firmware). Along with a GS-EDRV100 interface module, GS4 Series drives can be part of your Do-more PLC's Ethernet I/O network, just like how the GS1, GS2, and GS3 drives work as Ethernet I/O slaves. GSREGRD and GSREGWR instructions support the new GS4's parameter set. *Note: the GS-EDRV100 firmware **must be at least 6.0** to support the GS4 (use NetEdit to upgrade your GS-EDRV100 module).*
3. **EMAIL** enhancements
  - a. **DNS support** lets you specify the URL name of your SMTP server (e.g. *smtp.gmail.com*). The Do-more PLC will resolve that name automatically whenever it sends out an email (requires DmT 2.2). See *how to configure your DNS Server Address in Enhancements section below*.
  - b. **Secure EMAIL** on BRX

As security becomes more important, the BRX PLCs added support for Transport Layer Security (TLS) when sending email.

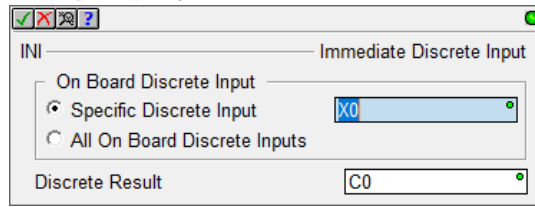
In addition, BRX PLCs support Certificate Validation to ensure the identity of the remote server.

You can also verify your SMTP Client settings against the actual SMTP Server from your PC.

Secure EMAIL is optional, but requires DmT 2.2 on your BRX PLC if configured. Also requires BRX Gate Array version 1.8.

4. New Instructions

- a. **INI – Immediate Discrete Input** (only available on BRX MPUs with onboard discrete inputs)



Along with OUTI/SETI/RSETI that can generate clock pulse trains, use INI to read back data from devices that return data based on the generated clock pulse train.

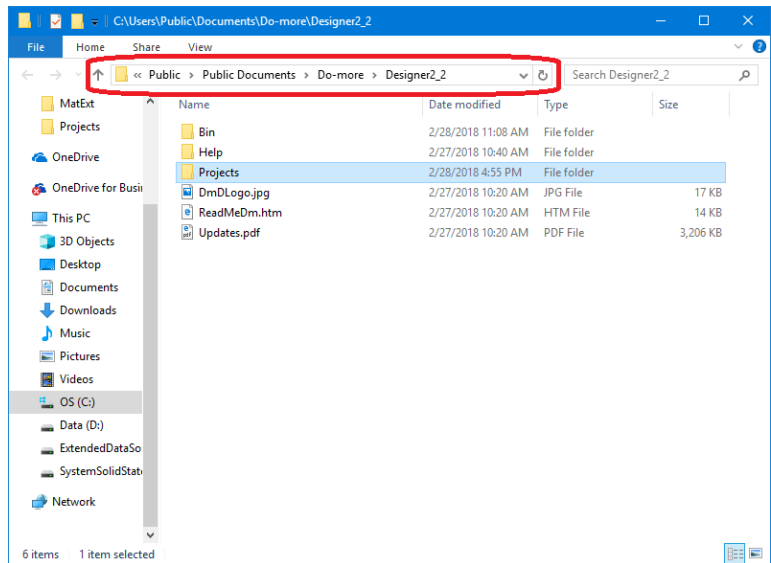
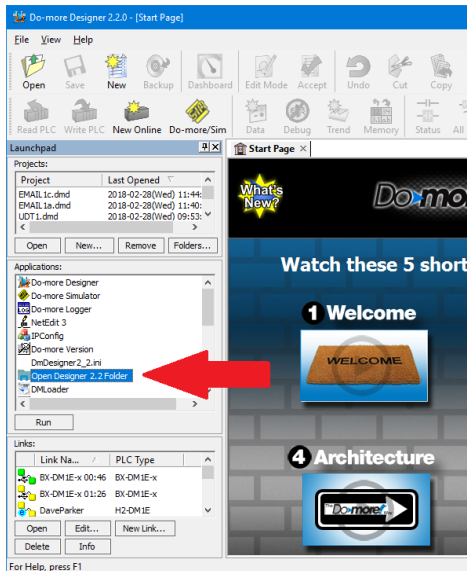
Note: INI instruction is **NOT needed by ISR** Interrupt Service Routines since ISRs automatically reads ALL the High Speed I/O input states upon entry to the ISR. Also, this instruction does **NOT** update the image register value of the Specific Discrete Input parameter (e.g. X0). It just gets the ON/OFF state of the physical input of the Specific Discrete Input parameter and writes that state to the Discrete Result parameter. This way the Specific Discrete Input image register value remains invariant throughout that specific PLC logic scan.

5. New System Status Elements:

DST52	\$ActiveSessions	see Help Topic DMD0208
DST58	\$ProgramChecksum	System Nickname Locations

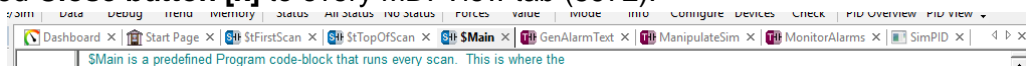
6. Enhancements

- a. There is a link to **Open Designer 2.2 Folder** in the *Applications* panel of the *Launchpad* view to open Windows Explorer to the Designer 2.2 folder below your PC's *Public Documents* system folder:



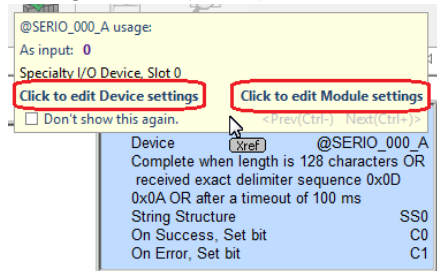
There is a similar link to **Open HAPTools Folder** further down the *Applications* list. If you have an older version of Windows, these will be located below the *All Users Documents* folder.

- b. Added **Close button [x]** to every MDI View tab (5972).

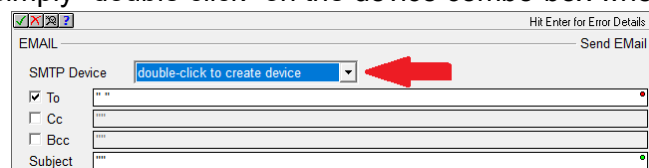


## Do-more Updates Rel 2.2 March 15, 2018

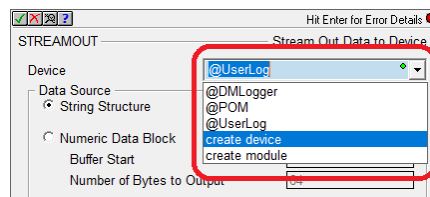
- c. View Options Dialog: **Smarter** about when to automatically check the **Apply to New Views** checkbox (5853).
- d. Ladder View: Added option to **Always start in Edit Mode** (5620).
- e. Ladder View: Show specific **Leg Label or Edge Trigger tooltip** when floating mouse cursor over an instruction's Leg Label or Edge trigger. Tooltip includes a link to the instruction's Help topic to get more details about the input leg (5206).
- f. Ladder View: Added two **hot links to the Cross Reference tooltip** whenever you hover over an "@" Device parameter. The hot links take you to edit either the Device configuration and/or any corresponding Module configuration (5981).



- g. Ladder View: Online **status** of **STRING** elements let you **right click** and change between ASCII and Quoted display **formats** (5501). Default format is ASCII, as before.
- h. Ladder View: **Create Nickname dialog** title bar now contains the **instruction parameter's description** to help provide better context while editing. This is especially helpful if you had 2 or more new nicknames you needed assigned during that instruction's edit session (5298).
- i. Ladder View: Added a checkbox to the **FOR and WHILE loop instruction editors** to **automagically add the corresponding NEXT or WEND** instruction as the next rung or at the bottom of the code-block (5514).
- j. Ladder View: When editing device-centric instructions, **made it easier to create devices** or modules when there currently are NO corresponding devices for that instruction type. Now all you have to do is simply "double click" on the device combo-box when you bring up the editor:



When devices *do* exist for that instruction, but you need to create another device, you can still drop-down the combo box list and select *create device* or *create module* items in the list that show up below the existing devices:

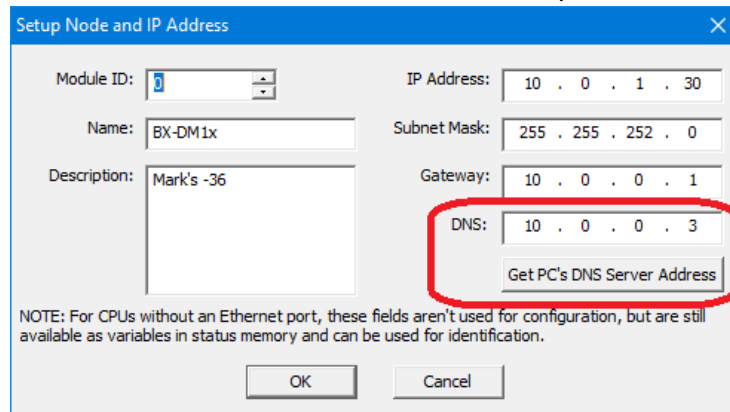


These will launch the *Create New Device* or *Create New Module* dialog box within the System Configuration (5970).

- k. Ladder View: Tweaked HSIO instruction editors' high speed register selection.

## Do-more Updates Rel 2.2 March 15, 2018

- l. Ladder View: Simplified the **RX/WX instruction editors' Read From / Write To** dialog behavior regarding built-in native data block vs. user added data block selection for the REMOTE system. The dialogs now utilize a radio button group where the Built-In radio button just has a simple element field editor, but the User radio button lets you enter the remote system's data block # (5778).
- m. Ladder View: High Speed instructions' resource descriptions changed from *general(@device)* to *@device(general)* (5675). For example, *High speed Ctr/Tmr 1 Acc (@MyEncoder)* now displayed as *@MyEncoder (High speed Ctr/Tmr 1 Acc)*
- n. Ladder View: INTCONFIG – Configure Interrupt instruction editor's Match Register panel has a "Configure Master Register Device" button (5899).
- o. Ladder View: NETTIME – SNTP Client instruction editor has button to launch the IP Address Lookup dialog (5870).
- p. Trend View/PID View: After **saving the log/exported** trend data to a file, user asked whether they would like to **open Window's Explorer** to that folder, where the user could, say, open the .CSV file with Excel, etc. (3192).
- q. PID View: Added option to let user specify **number of decimal places** for real number display in the Form View (5517, thanks to MN).
- r. I/O Base Display: Added the concept of an **unknown module**. As new modules are developed in the future, "old" versions of Designer can minimally identify them as being "unknown".
- s. Configure your **PLC's DNS Server address** from the Setup IP Address dialog:

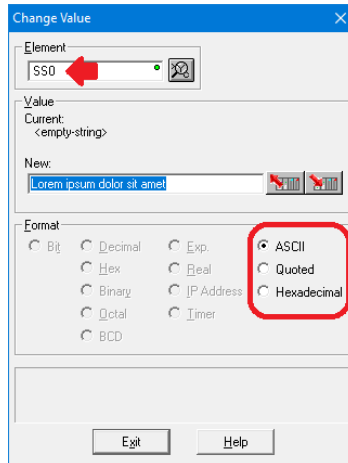


DNS (Domain Name System) resolves named URLs to their corresponding IP Addresses. DNS/URL support was added to the EMAIL SMTP Client Configuration so you can configure the corresponding SMTP Server's address simply as *smtp.gmail.com* (for example), then let the Do-more PLC use DNS to resolve that name whenever you use an EMAIL instruction (see item 3.a. above). You no longer have to use the DNSLOOKUP instruction. Requires DmT 2.2. You can also configure the DNS Server address from NetEdit 3.15.

- t. Browse PLC File System Dialog: Now shows files' date-time-stamps using the PC locale's short **month text** (thanks to MK@PD).
- u. Output Window: **Automagically hides** after successful operations that utilize the Output Window, like after a successful Accept or a successful Program Check. It will remain visible if anything was reported in the Output Window by the operation (5929).

## Do-more Updates Rel 2.2 March 15, 2018

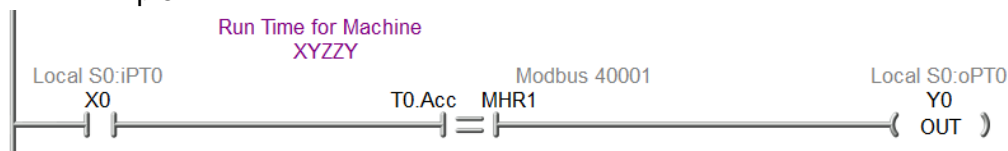
- v. **Change Value** dialog supports **STRINGS**, with support for ASCII. Quoted, and Hexadecimal display/edit formats (5813):



- w. **Implicit Element Documentation Field Display** added (3451, 5606, 5688):

- i. Inherited Extra Info/Description from **parent structure's** element documentation or from root cast element documentation. For example, if T0 element has a Description of "Run Time for Machine XYZZY", then when T0.Acc or T0.Done are shown in Ladder View or Data View, they will display the base structure's T0's Description field of "Run Time for Machine XYZZY", but ONLY if those field elements do NOT have their own Description. Or D0 has Extra Info of "IP Address", then the cast of D0:UB0 in Ladder or Data View will display the cast's root element's Extra Info field of "IP Address" if that cast does not have its own Extra Info field value.
- ii. If an I/O Element's Extra Info field does not exist, then Ladder and Data Views will display that **I/O points Master/Base/Slot Point** or **Channel** values. For example, if X0 does NOT have its own Extra Info field, then Ladder View will display "Local S0:iPT0" for the Extra Info field (Local base, Slot 0, Input point 0).
- iii. If a Modbus Guest Protocol element Extra Info field does not exist, then Ladder and Data Views will display its **Modbus protocol address**. For example, if MHR1 does NOT have its own Extra Info field, then Ladder View will display "Modbus 40001" for MHR1's Extra Info field.

Here's an example:



This does NOT affect the Element Documentation database contents. It only affects the DISPLAY of the element documentation fields in the various views like Ladder and Data views. Individual views' Element Documentation Field filters will still have precedence like normal. Each of the individual Implicit Element Doc options can be enabled or disabled independently from the Global Options dialog (View->Options... Global Options tab). See Help Topic *Using the Launch Pad* (DMD0294) Global Options section for more details.

## Do-more Updates Rel 2.2 March 15, 2018

- x. New **Program Check** Rules:
  - i. E96 Report Unknown Expansion Modules. If you ever get this, just upgrade the firmware to add support for the unknown module.
  - ii. E97 Invalid System Configuration. For example, when Memory Configuration exceeds capacity.
- y. After writing a project to the PLC where the memory configuration had been “incompatible” between Designer and the PLC (where all status had been disabled), go ahead and prompt the user to turn All Status ON since the configurations are now “compatible” (5335).
- z. Export: After exporting the Project or Element Documentation to a file, prompt to **open Windows Explorer** to the exported file folder, where you can open it or perform other file operations on it (5617).
- aa. Global Options: Changed the initial **Default View type** to Ladder View.
- bb. If at launch time, if Do-more Designer’s **Communication Server’s** Communication Link **Autosense function** reports that you have a bunch of comm links that all disabled, then Designer will prompt you to see if you want to disable the Autosensing of your communication links at start-up. If disabled, this can speed up the launching of Designer if you have a lot of comm links to PLCs that are typically not connected to your PC. If you decide to keep the comm link autosense functional, Designer won’t ask again until you get five additional disabled comm links. If you ever need to turn it back on, open up the DmDesigner2\_2.ini file and change the “AutoSense” value from 0 to 1 below the [Comm Server] group (5896, thanks to kw).

## 7. Adjusted Anomalies

- a. Project’s Designer Layout remembers the MDI tab order (4399).
- b. Download Project dialog’s Prepend Project Note’s field word-wraps (5877).
- c. The Project’s Do-more Technology Version is now always downloaded when you download a project.
- d. Projects that contain Shift Register instructions will now match between Disk and PLC (5927).
- e. Browse PLC File System now properly handles PCs with positive time zones (no longer displays Microsoft’s “Invalid Parameter” error; thanks to MK@PD).
- f. Remote Bases report errors if you attempt to add an unsupported module type for that base, like trying to add an H2-ECOM100 intelligent module to a H2-EBC100 205 Remote Base (5949).
- g. GSREGRD/GSREGWR were misreporting their opcode lengths, potentially causing some confusion in the Ladder Display (5953, thanks to GD).
- h. Browse PLC File System dialog now working properly with Simulator’s pseudo “SD Card” file system (5915).
- i. Project File’s Documentation Database client properly handles unknown client types, so no longer get Microsoft’s “Encountered improper argument” error (5909).
- j. Unused Dynamic Schemas properly getting cleaned up.
- k. Added status for CALL instruction’s “Called Counter” parameter.



### Do-more Updates Rel 2.2 March 15, 2018

- l. CALL instruction display optimized when there are no parameters (5884).
- m. Trending a COPY instruction works better (5894).
- n. FILELOG instruction handles Replace and Assign Unassigned Nicknames (5878).
- o. DEBOUNCE – Reduce Discrete Input Chatter instruction editor now allows the SET Delay or RESET Delay to be 0 (5950, thanks to GD).
- p. AXHOME – Axis Perform Home Search better handles invalid Limit parameters.
- q. EMAIL instruction's email address lists are now comma delimited.
- r. MRX/MWX instruction editor properly handles situation when no Modbus clients exist (5975, thanks to MP@LWG)
- s. DRUM instruction editor now intelligently warns when there are trailing or intermediate steps that do not have either an event or a time (5633).
- t. GSREGRD/GSREGWR Parameter Editor tree missing the tree node for the last parameter.
- u. Instruction Editors that contain tables now report the table name as part of the parameter description in its warning/error dialogs and the Create Nickname dialog (5298).
- v. Trend/PID Views Snapshot dialog's number of floating point decimal places adjusted.
- w. When creating a new Memory View, if the user enters a non-byte aligned range of bits, they will be alerted to the issue and offered a new range that IS byte-aligned that includes the range they originally entered (5629).
- x. Status Bar properly halts display of flashing ROM chip when closing a project (5645).
- y. Dashboard's O/S and Booter hot links' tooltips adjusted (no longer need to go to System Information dialog to download firmware) (5908).
- z. Widened Block Cursor's parameter cursor so its border no longer clips any parameter text (5930).
- aa. Do-more Technology Version dialog correctly reports all the various versions (5910).
- bb. Improved PID Auto-Tune when communication failures are occurring (5858).
- cc. Setup BX Analog Module better handles 16 bit unipolar option.
- dd. Memory Configuration dialogs properly report when you run out of memory (DM-416).
- ee. Element Picker (especially Stage Bits) optimized (5973). This became slow due to Microsoft's Windows 10 Fall Creator Update's GDI memory fragmentation, which Microsoft is addressing.
- ff. Memory Image Manager properly handles reading/writing large structures.
- gg. Create Nickname dialog better handles duplicate nicknames (5985).
- hh. Specific project-centric toolbar buttons properly disable when no project is opened (5988).
- ii. Improved USB connection recovery (6010, thanks to PLCG).
- jj. **DmT 2.2 firmware:** PD and ND box "termination" logic behaves like OUT coil and turns off the Pulse bit output (5987, thanks to AA@SV).

## Changes in Do-more 2.1

(all 2.1.4, 2.1.3 and 2.1.2 entries are noted; all other entries are from 2.1.1)

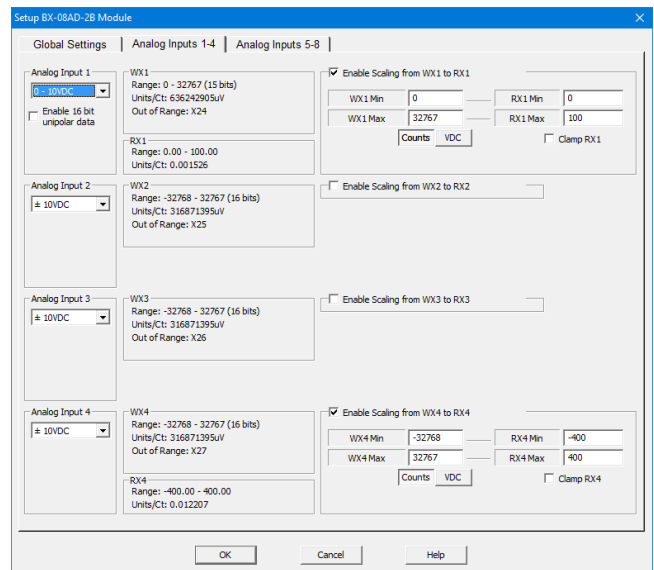
### 1. Added support for NEW BRX Analog Expansion Modules.

Part Number	Type	Signal	Signal Range	# Channels	Resolution
BX-08AD-1	Analog Input	Current	0-20mA or 4-20mA	8	16 bit
BX-08AD-2B	Analog Input	Voltage Bipolar or Unipolar	±5VDC or ±10VDC or 0-5VDC or 0-10VDC	8	16 bit
BX-04THM	Analog Input	Thermocouple		4	
BX-08DA-1	Analog Output	Current	0-20mA or 4-20mA	8	16 bit
BX-08DA-2B	Analog Output	Voltage Bipolar or Unipolar	±5VDC or ±10VDC or 0-5VDC or 0-10VDC	8	16 bit

### Auto-Scaling Analog

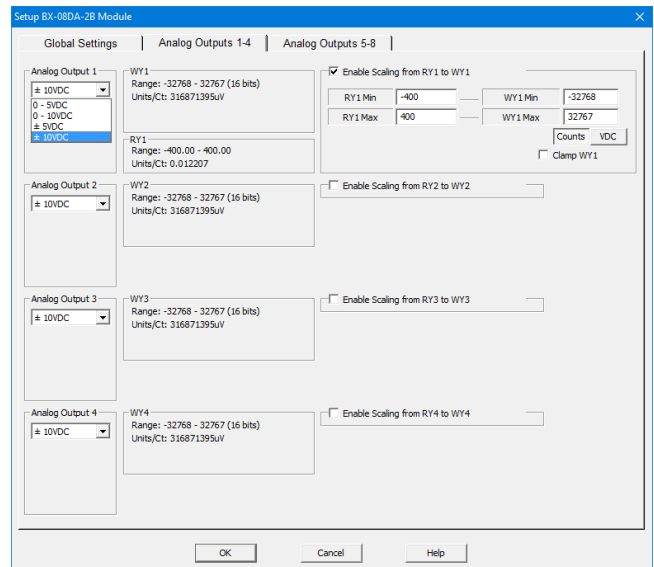
The BRX analog modules along with any onboard MPU's analog channels support auto-scaling on a **per-channel** basis. Auto-scale also supports **clamping**, if desired.

For Analog Input modules, the raw WX value can be scaled to its corresponding RX REAL value. For example, WX1 raw value range of 0-32767 can auto-scale to RX9 REAL value of 0.0-100.0. The PLC I/O scan will generate the RX1 value automatically, without the need for any SCALE or MATH instructions in your ladder code. So a WX1 signal value of 16384 (5.0VDC of 0-10VDC) will result in an RX9 value of 50.0.



For Analog Output modules, the scaled RY value can auto-scale back to its corresponding WY raw value. For example, RY1 REAL scaled value of -400.0 to +400.0 can scale back to its raw range of -32768 to +32767 (±10VDC). So RY1 value of +200.0 will result in a WY1 raw value of +16384 that generates an output signal of +5.0VDC.

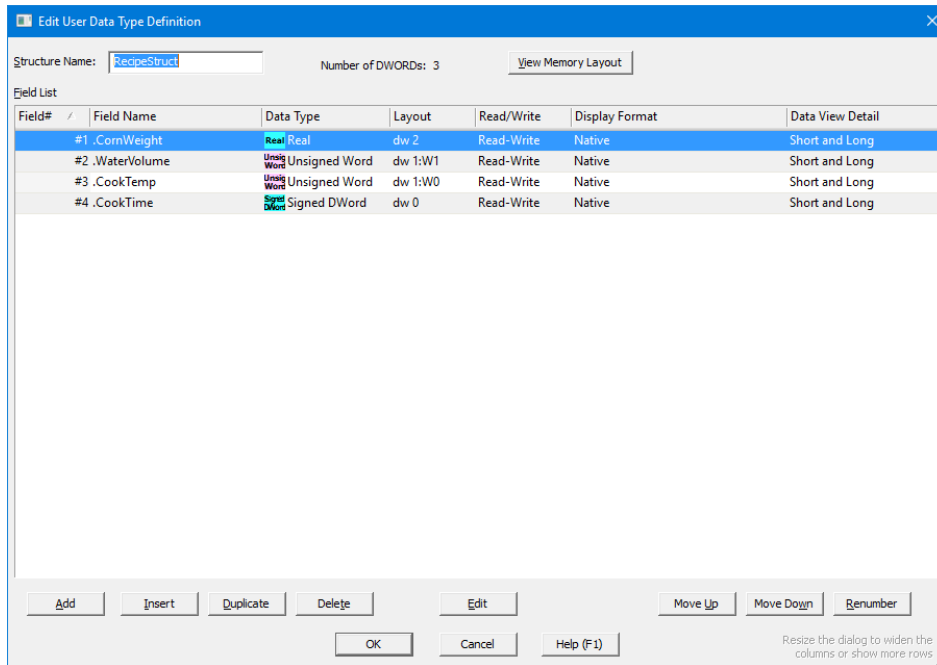
**Per-Channel Signal Configuration** lets you choose the signal ranges for voltage and current modules, and bi-polar vs. unipolar for the voltage modules. For example, for voltage output module BX-08DA-2B, you can select from 0-5VDC, 0-10VDC, ±5VDC, or ±10VDC. *No need to purchase different modules for different signal levels.*



## 2. User Data Types Structure Definitions

Users can now define their own **complex User Data Type structure** type. Possible usage includes **recipes, log data, alarm/event details, complex structures from other PLC vendors,** etc. Once you have defined your own User Data Type, you can **create any number of Data Blocks or Heap Items of *that* User Data Type structure definition.**

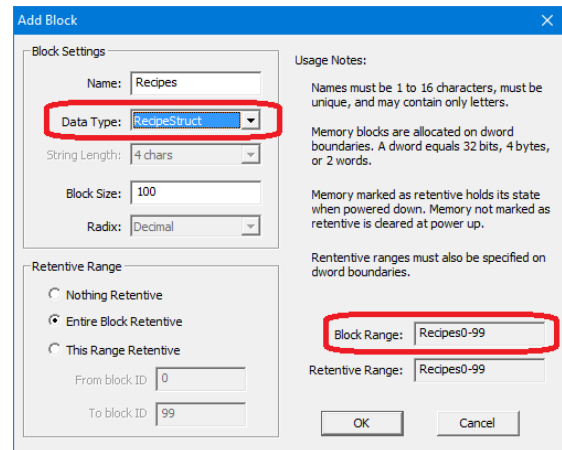
For example, if you have a recipe for cooking corn, you have recipe values such as how much corn (CornWeight), how much water (WaterVolume), cook temperature (CookTemp), and cook time (CookTime). Just go to the *Memory Configuration* entry in the *System Configuration* dialog, and click on the *User Data Type* tab. From there you can create a new User Data Type structure definition called *RecipeStruct* with those structure field members:



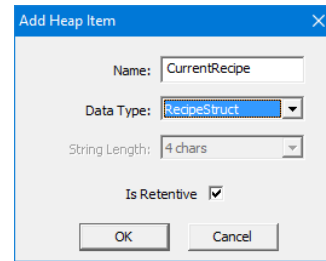
Now you can create a data-block of 100 *RecipeStruct* structures, and call that data-block *Recipes*, which you can access just like the block of T Timer structures:

Recipes0.CookTime, Recipes42.CornWeight, etc.

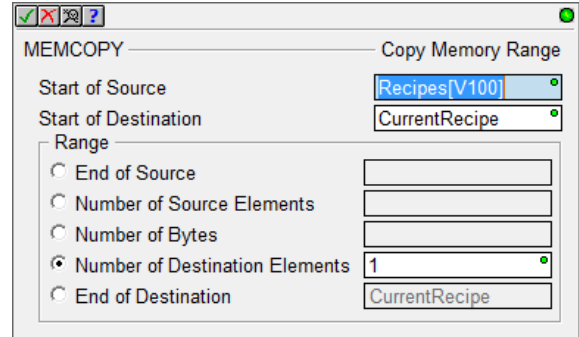
This block could be the complete set of 100 different *RecipeStructs* that you can pick from, Recipes0 to Recipes99.



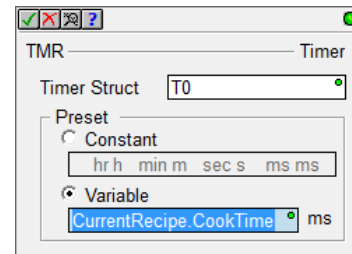
You can also create a new heap-item of a single *RecipeStruct* as the current recipe and call it CurrentRecipe.



Then you can move one of the *RecipeStructs* in the Recipes block to the CurrentRecipe heap-item using array indexing based on a user selection by setting V100 equal to a recipe index number from 0 to 99.



Then in your Ladder Logic, use **CurrentRecipe.CookTime** as the Preset to your TMR instruction.



**Import/Export User Data Type Definitions Between Projects** - Any User Data Type definition can easily be re-used in other Do-more projects by simply using the Import or Export buttons from the Memory Configuration's User Data Types dialog. You can then easily share User Data Type data between Do-more PLCs via RX/WX Network Read/Write instructions, like updating recipes across multiple PLCs. **Copy/Paste of Ladder Logic** that reference elements of a User Data Type will also automatically paste the User Data Type definition and the corresponding data-block or heap-item to the destination project.

### 3. Load Project Image from SD Card in BRX PLC

If an SD Card contains a PLC image file with the name `image.bin` in the root folder, then when the PLC is rebooted *with the Mode Switch in the STOP position*, the BRX PLC will load and save that project image as its new project.

This image file contains the 3 critical areas of your project: System Configuration, Program, and Documentation. It also can optionally contain the Image Register's Retentive Memory values, User Password Configuration, and IP Network Configuration.

This is a great feature for OEMs that need to replicate a PLC's contents over and over again, without the need for using Do more Designer. Just create an image on an SD Card, stick it in a new BRX PLC that is powered down, put the Mode switch to the STOP position, then TURN IT ON.

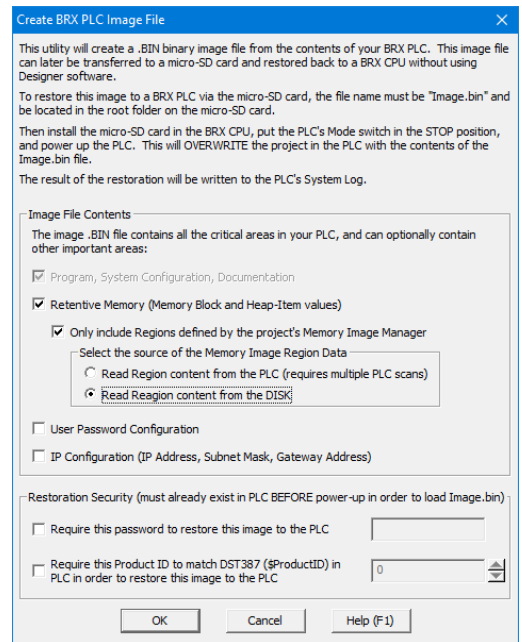
There are also some optional security features similar to what are in the DmLoader utility, like requiring a valid password to be defined in the PLC, or requiring a matching Product ID. If these optional security features are defined but fail, the PLC contents remain as-is and are NOT updated with the contents of the `image.bin` file. The result of the restoration is logged to the PLC's System Log.

There are two ways to generate a BRX PLC image file:

- from Designer via PLC->Create PLC Image File menu (see dialog box to the right)
- using the new BACKUP – Create PLC Image File instruction

The BACKUP – Create PLC Image File instruction lets you create image files on-the fly at runtime. Great for automatically making PLC image backups on a weekly or monthly basis. This is a GREAT feature for places that need to make a backup of the PLC system **including the Image Register's Retentive Memory contents**.

See Help topic **DMD0425 – Backup and Restore Using Micro-SD Card** for all of the details.

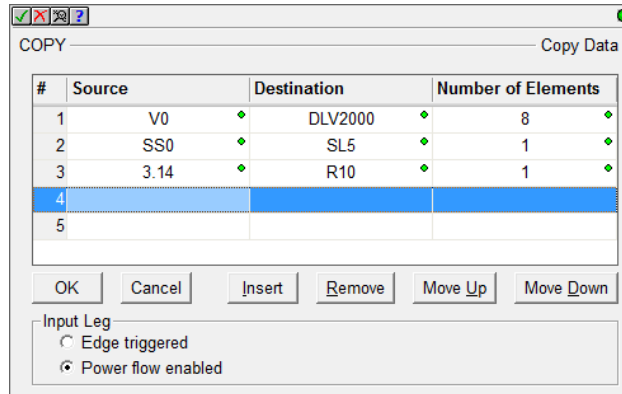


#### 4. Instructions

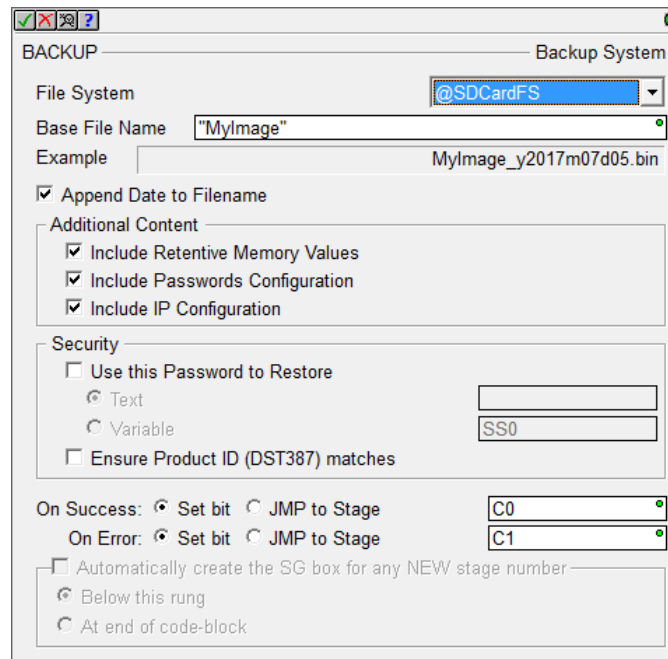
To utilize any of the new PLC features, new instructions and instruction changes, the CPU firmware requires at least **Do-more Technology Version 2.1** (see Help->Do-more Technology Versions when online). To upgrade your Do-more CPU firmware, select PLC->Update Firmware menu. The firmware files that shipped with this version support Do-more Technology Version 2.1: bxdm1x\_2\_1\_0.os for BRX, h2dm1x\_2\_1\_0.os for 205 Do-more CPUs, and t1hdm1x\_2\_1\_0.os for the Terminator Do-more CPUs. Note that newer firmware files may already be available.

##### a. New Instructions

- **COPY – Copy Data** lets you perform most of the data assignment operations in one compact instruction. It merges the functionality of MOVE, MOVER, and SETNUMR for numeric data; SET/RST, SETR/RSTR for bit data; copying entire structures and ranges of structures; and moving Strings of different maximum lengths between each other, for example moving SS0 to SL5. (5687)

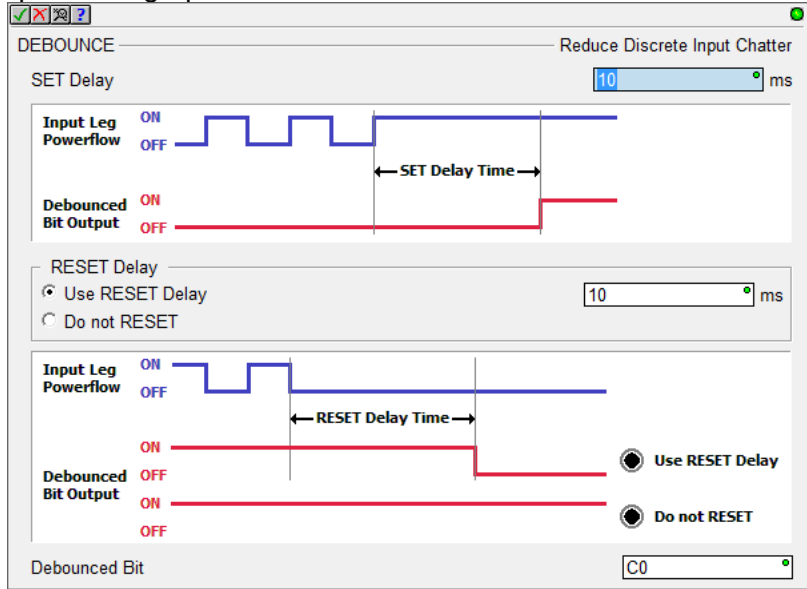


- **BACKUP – Backup System** lets you create an image of your PLC to a .bin file which can later be used to load that project into a BRX PLC without the use of Do-more Designer.

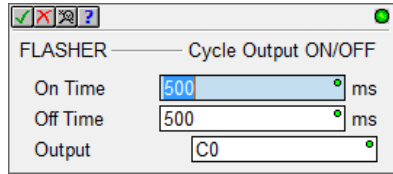


See the *Load Project Image from SD Card in BRX PLC* section above for more information.

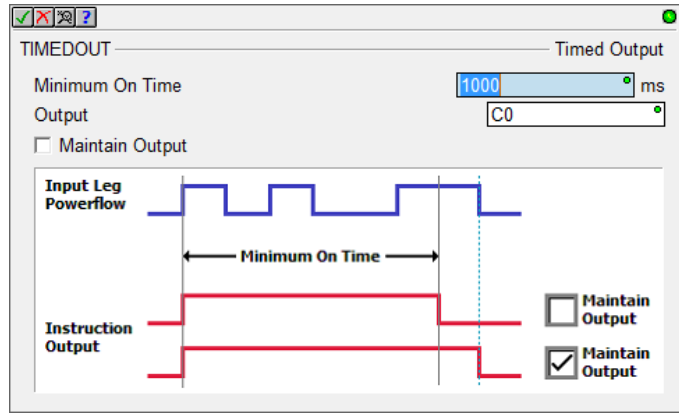
- **DEBOUNCE – Reduce Discrete Input Chatter** – software based "signal qualifier" on the powerflow input. The graph in the instruction editor below details its behavior.



- **FLASHER – Cycle Output ON/OFF** lets you define the flashing cycle of a bit output. It even supports lopsided ON/OFF times, and variable time.



- **TIMEDOUT – Timed Output** sets the Output for a predetermined amount of time based on the powerflow into the box. The Output can be ON longer if the "Maintain Output" option is checked and the input powerflow is ON when the Minimum On Time expired.

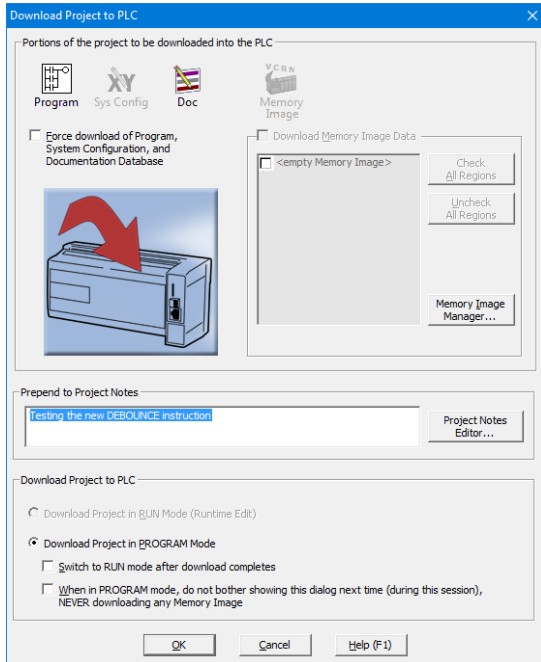
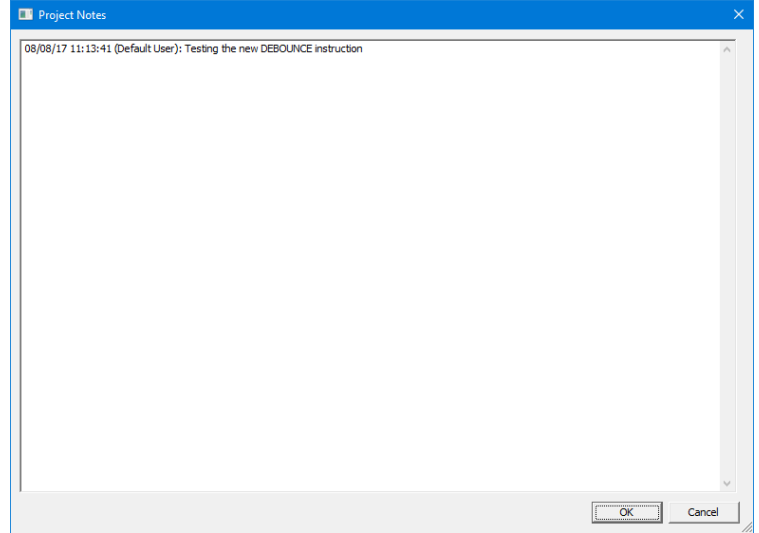


## 5. Project Notes Document

The new Project Notes document is a place where you can make general notes about your project. It is saved as part of your Do-more project on Disk and in the PLC, and can be printed out as part of your project's hardcopy.

The editor/viewer is accessed within the Dashboard's Documentation panel, or via the Tools->Edit Project Notes menu. It is a simple editor that contains simple text, but gives you a place to jot notes about work done, work needed to be done, design details, etc.

The document supports up to 60,000 characters (or 60 pages).



In the **Download Project to PLC** dialog, there is an option to prepend some text to the Project Notes document every time you download something to the PLC.

If anything is entered there, that entry is prepended to the top of the Project Notes document with the current date/time stamp and the current User Name that performed the download.

It is probably good practice to always enter something there, especially after commissioning your PLC. This way you can have a "paper trail" of any changes made to your PLC.

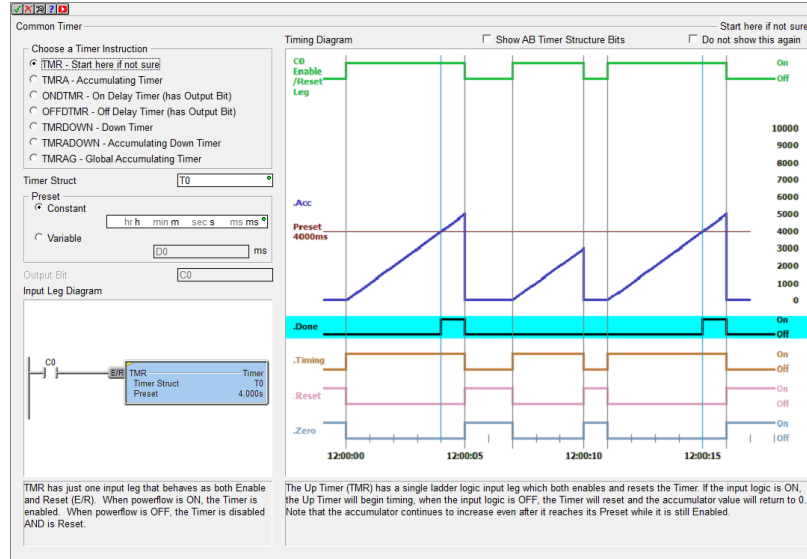
## 6. New System Words (DSTs)

DST51	\$FatalTermCode	see Help Topic
DST389	\$ImageBackup	DMD0208 <i>System</i>
DST390	\$ImageRestore	<i>Nickname Locations</i> and
DST391	\$ImagePassword1	DMD0425 <i>Backup and</i>
DST392	\$ImagePassword2	<i>Restore Using Micro-SD</i>
		<i>Card</i> for details



7. Enhancements

- a. **Timer structures** – Added **AB/Rockwell Timer bit fields**, specifically .TT (Timer Timing), .DN (Done), .EN (Enabled). These bits behave just like the AB Timers do. The behavior of the existing Do-more Timer bits has not changed. Use whichever bits you like.
- b. **Common Timer Instruction Editor** – provides details about the behavior of each different Timer instruction in the Do-more control engine. The editor comes up by default when you create any **new** Timer instruction (TMR, TMRA, ONDTMR, OFFDTMR, TMRDOWN, TMRADOWN, TMRAG) (5736).



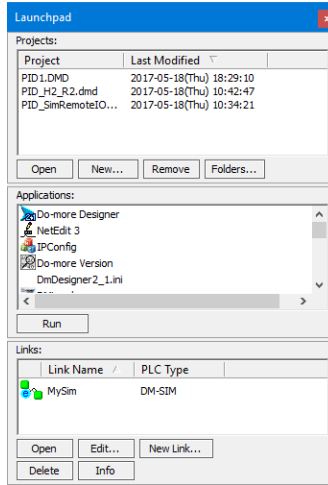
As you cycle through the different Timer instruction radio buttons in the top/left, the Input Leg and Timing diagram descriptions change, providing details about that specific Timer instruction. This makes it easy to see the differences between the various Timer instructions, giving you the information you need to choose the best Timer for the task at hand.

Whenever you edit an existing Timer instruction, the instruction specific editor is used, not this Common Timer editor (you can change that behavior via the Ladder View Options dialog if you want it to always show up, or to never show up). You can also disable the launching of this new Common Timer editor by checking the *Do not use this again* checkbox at the top/right of the editor. If disabled, Designer will always bring up the default instruction specific editor, not this Common Timer editor, regardless of whether it's a new or existing Timer instruction.

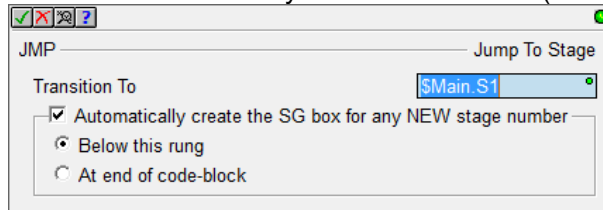
If you are familiar with AB's Timer behaviors, there is also a checkbox at the top to diagram the new AB Timer Structure bit behaviors for each Timer instruction (see previous item for details).

- c. General security enhancements (2.1.2).
- d. **Dashboard** – When the **Reload button** is hit when Online to a PLC, **the current I/O Configuration in Designer is compared with the actual I/O Configuration in the PLC** at that time. If any differences are found, user is given an option to reload actual the I/O Configuration from the PLC into the Dashboard View.
- e. **Dashboard** – Clicking on a CTRIO module in the Dashboard's base display will now give you the option to open the **Monitor CTRIO Module** dialog when you are online with a PLC (5694).
- f. **Dashboard** – A new item exists under the **I/O panel: Local I/O Configuration Mode** as being either Auto or Manual. Clicking on that item takes you to the I/O Configuration page in the System Configuration dialog to change the mode.

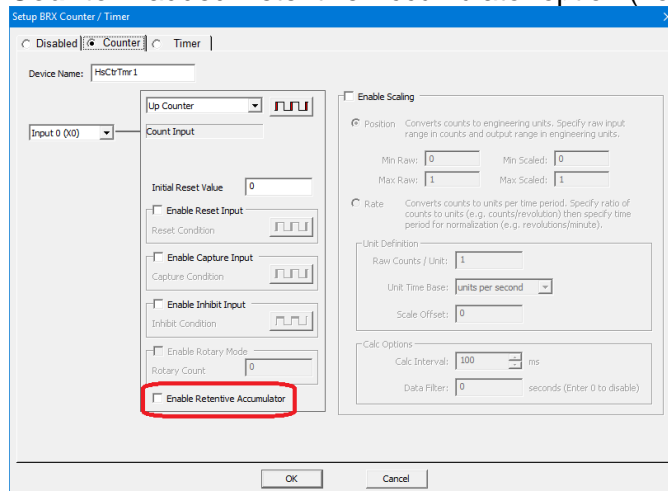
- g. **Launch Pad** – The Projects list, Applications list, and Links list are simple lists with **simple scrolling and sorting behavior**. The Projects list has **columns** for the Project name and **Last Modified date-time stamp**. The Links list has columns for the Link Name and PLC Type:



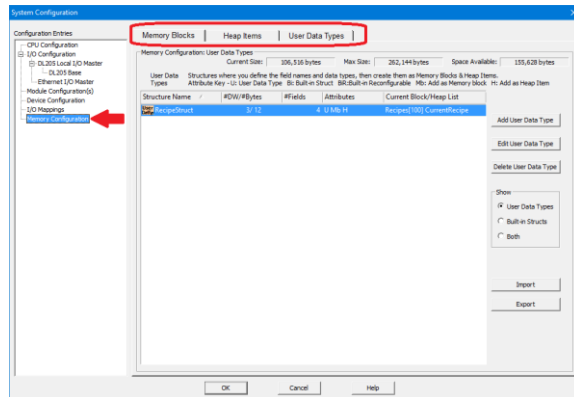
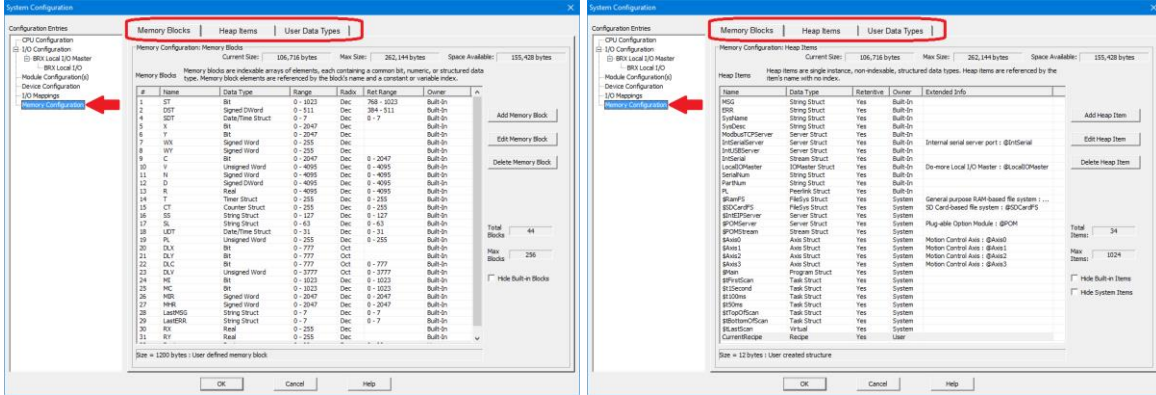
- h. **Stage Jump Instructions** - All of the instructions that support the Stage JMP operation now offer the option to **automagically create THAT Stage bit's SG instruction** if the stage bit is new for the current code-block. If the option is enabled, there are 2 options on *where* to place the new SG instruction, either below the current rung OR at the end of the code-block. It is smart enough to know to NOT create the SG instruction if it already exists for that Stage Bit, so you can just keep it checked all the time if you like the feature (5690).



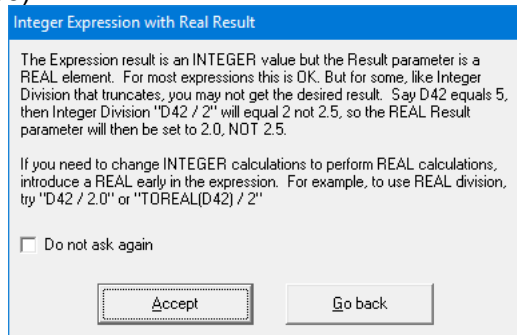
- i. **Options Dialog** now prompts you if you did not check the Apply Options To: New Views checkbox (5853).
- j. **BRX High Speed Counter** - added Retentive Accumulator option (non-retentive by default).



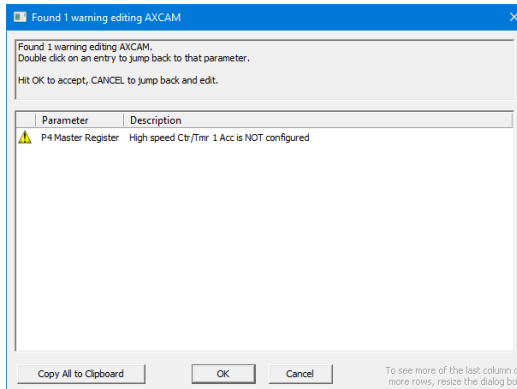
- k. **System Configuration – The Memory Configuration Entry** in the dialog has been divided into **3 tabs**: 1. Memory Blocks, 2. Heap Items, and 3. User Data Types:



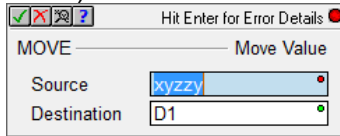
- l. **MATH Editor** now warns if the Expression is performing **INTEGER** arithmetic but the Result parameter is **REAL** (5860).



- m. **Instruction Editor** - The validation mechanism now supports reporting **Errors, Warnings, and Messages** (3853):

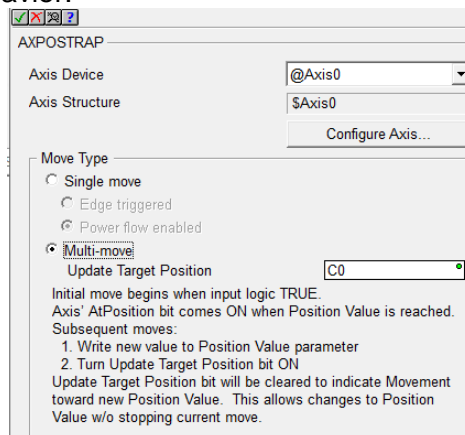


- n. **Instruction Editor** - Currently, whenever an instruction's editor knows something is invalid, it shows a red bulb in the edit dialog box's title bar. Next to the red bulb, it will remind you to *Hit Enter for Error Details* (see next item).



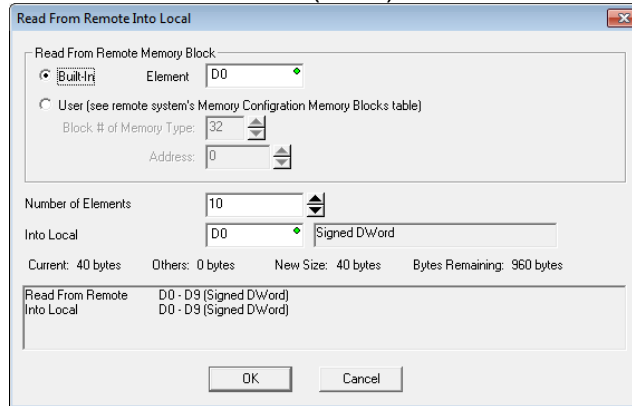
So whenever you see the red bulb, just hit *Enter* key for all of the details (5742).

- o. **Dashboard and System Configuration I/O Configuration** - Modules in the base display have "Configure Module" added to their left-click popup tip if they are configurable.
- p. **Ladder View** – Changed **default ladder Background Selection color** to match Windows 10 selection color. Previous default color was too dark and made element text difficult to read.
- q. **Ladder View** – Adjusted Online Status Data Format **Context Menu** entries.
- r. **Ladder View** – Added third Option for showing lengthy instruction details for *most* instructions (do not bother showing long AXCAM table, but show CALL subroutine parameters); this is the default, but the default for Print Ladder is to show *All Details* (5696).
- s. **Data View** - Made grid lines more visible. You can turn grid lines OFF in Data View's Options dialog. (5771).
- t. **Trend View** – Save Log File's Browse button's Save-As dialog now defaults to the directory and the file name specified in the File Name field (5243).
- u. **Trend View** – can add a **range of Stage Bits** (5647).
- v. **Dashboard and I/O System View** – show when too many modules are installed (5851).
- w. **Video Library** - Automatically refreshed when you launch the **Browse Videos** dialog.
- x. **Error, Warning, Message Report dialogs** - now have a Copy to Clipboard button.
- y. **Instruction Toolbox** - Has option to show **Instruction Help** in a tooltip as you hover over an instruction's mnemonic in the Toolbox. To turn that option OFF, right click on the Toolbox and UNcheck the *Show "Help" Tooltip* menu option (5672).
- z. **FILELOG Instruction** - automagically prefers nicknames over element names for the **header line** of the CSV file.
- aa. **AXPOSTRAP – Axis Move to Position Using Trapezoid** – Instruction editor better clarifies the Multi-Move steps and behavior.



- bb. **AXCAM, AXGEAR, and AXFOLLOW Editors** – Warn when the selected Master Register is an *unconfigured* High Speed Ctr/Tmr (5697).

- cc. **RX/WX – Network Read/Write** – The Table Entry Editor dialog makes it clearer when entering the Remote Memory Block when it is a **Built-In vs. a User data-block**. It now uses radio buttons for Built-in vs. User, uses simple element entry when it is Built-In, and relabeled the Remote block type's "ID" field to "Address" (5778).



- dd. **HWINFO – Get Hardware Information** - Instruction editor's I/O Master combo box is no longer sorted alphabetically, but in Master order: @LocalIOMaster, then @EthIOMaster, then ... (5763).
- ee. **DirectLOGIC Migration Utility** supports the **DL-454 CPU**.
- ff. **Import Project** - Instruction parameter errors are reported with more detail.
- gg. **Project Information Dialog** (File->Properties) – Has an *Update Default Values* button to save off the current Company, Department, and Programmer fields, which will be used as default values on any new projects.
- hh. **System Information Dialog** (PLC->System Size Information) *System Status* tab shows the \$FatalTermCode DST51 value for CPUs running Do-more Technology version 2.1 or later (see section 6. *New System Words (DSTs)* above) (5850).
- ii. **Program Check** - Now utilizes a modal *Operation Status Dialog* in lieu of just a *Wait Cursor* because some projects can be quite complex. The Operation Status Dialog's Percentage Complete feedback is much more helpful than just a spinning wait cursor.
- jj. New **Program Check** rules:
- *W131 Instruction parameter is referencing a 16 bit unipolar WX/WY analog element without Unsigned cast ":U" (need to change WX42 to WX42:U)*  
Whenever you configure an analog channel to be 16 bit unipolar, the cast is needed since unipolar 16 bit values have an unsigned range of 0 to 65535, but native WX/WY are signed range of -32768 to +32767. So a maxed-out WX42 signal WITHOUT the :U cast would evaluate to -1, but it should evaluate to 65535. WX42:U will evaluate properly to 65535. So the warning just tells you to replace your WX42 with WX42:U.
  - *E094 High Speed I/O cannot be mapped to a different address*  
On BRX PLC systems, the accelerated hardware I/O interface requires the I/O mapping remain as-is, starting at X0 and Y0 (5818).

## 8. Adjusted Anomalies

- a. RX/WX Instruction's *Read From* and *Write To* table entry editors' *Remote ID* and *Number of Element* edit fields now correctly load the instruction's values, instead of always loading the default values of 0 and 1.
- b. CALL instruction being read from the PLC now correctly decodes setting range of bits to 1. Was incorrectly decoding a range of bits set to 1 as a range of bits being set to 0, not to 1 (5804).
- c. Memory Editor's and Memory Image Manager's *Import Memory* function correctly handles importing long strings (5557).
- d. The list of blocks in the "New Memory View" dialog is now sorted alphabetically (5756).
- e. Dashboard's serial port/serial POM tooltips and click behaviors properly adjust when any changes are made to their configuration.
- f. Dashboard correctly showing manually mapped I/O points.
- g. Dashboard's *Add a Module* hotspot no longer overlaps the scrollbar (5721).
- h. Dashboard better handles drawing and resizing.
- i. Dashboard Base Display no longer tries to refresh itself while the System Configuration is being redefined, specifically during Read from PLC and Clear PLC operations.
- j. Dashboard BRX SD Card hot spot always will launch the Browse PLC File System dialog regardless of whether any media exists or is mounted (5650).
- k. Launch Pad's Links list better handles unknown links.
- l. Ladder View – Relational Contact instruction properly displays different sized left-side and right-side parameters/status.
- m. Ladder View – Relational Contact has correct rung row height when using Symbolic Constant or Unassigned Nickname with Elements turned OFF but Nicknames turned ON (5872).
- n. Ladder View – Box instructions properly calculates their widths in display mode and in status mode.
- o. Ladder View – instruction editors with tables properly handle ordering of the Create Unassigned Nickname dialog and Error dialog (5873).
- p. Ladder View – corrected MOVE instruction width calculation (5821)
- q. Ladder View – optimized Relational Contact column's screen real estate (5685).
- r. Ladder View – instruction editor widths corrected when zoom level was less than 100%.
- s. Ladder View – properly filling out INTCONFIG – Configure Interrupt instruction's Match Register *Fire ISR When* combo box.
- t. Ladder View – NETTIME – SNTP Client editor for a new NETTIME instruction no longer tries to determine the current DNS IP address resolution for ntp2.hosteng.com. This was causing LONG delays if your PC was not connected to the Internet. Recommend using DNSLOOKUP's Variable IP Address and the DNSLOOKUP – Name to IP Address instruction, and resolving your SNTP server IP Address at runtime (5504).
- u. PACKETOUT – Output Data to Packet Device instruction editor supports broadcast address in the Fixed Address field (5549).
- v. Trend View properly handles ranges of casted elements (5647).
- w. Import Trend Archive utilizing Operation Status Dialog to keep the user interface responsive (5431).

**Do-more Updates Rel 2.1.4 October 19, 2017, 2.1.3 October 12, 2017, 2.1.2/2.1.1 September, 2017**

- x. When multiple PID Views are opened, closing one PID View no longer stops the communication for the remaining PID Views. Opening a non-maximized PID View properly shows the Form section of the PID View. Opening a project file/workspace that had been closed with multiple PID Views opened, now correctly re-opens all of those PID Views (5371, 5375).
- y. Data View – When you Monitor Data to a Data View, the new Data View now automatically turns Status ON.
- z. I/O System View no longer causing menus to collapse (5737).
- aa. Changed velocity range minimum value from 0 to 10 in AXCONFIG (Min & Max velocity) AXJOG (Target Velocity) AXSETPROP (Min & Max velocity) AXPOSSCRV (Max velocity) AXPOSTRAP (Max velocity) (5714).
- bb. Added a warning to AXPOSTRAP when *Multi-move* is picked but the Position Value is a constant (should be a variable when using *Multi-move*) (5809).
- cc. Corrected LERP instruction's display when in "short summary" mode.
- dd. STREAMOUT instruction editor now correctly reports valid state related to the *Flush INPUT device first* checkbox.
- ee. RX/WX Network Read/Write instruction editor's Remote Password no longer reports certain error conditions as being "valid".
- ff. Adjusted the set of instructions which are allowed in a SUBROUTINE (5730).
- gg. Creating Interrupt Service Routine (ISR) works correctly for all BRX MPU projects (5687).
- hh. Adjusted/Corrected Trend Instruction (5695, 5537):
  - AXCAM, AXFOLLOW, AXGEAR missing Master Velocity
  - AXGEAR missing Slave Position
  - FREQTMR, FREQCNT show rate and the accumulator in 2 separate panes
  - DTCMP shows the comparison bits in 1 pane, and the individual Date/Time fields in individual separate panes
  - File instructions (FILE\*\*\*\*) show File System and/or File Handle details
  - String instructions (STR\*\*\*\*) no longer show useless flag constants
  - CALL shows input/output parameters
- ii. Can now delete a module in an Ethernet I/O base (5718).
- jj. System Structures are updated where needed.
- kk. Right clicking in the "empty" area of the MDI tab bar no longer brings up an empty context menu (5595).
- ll. When resizing the Folder Settings dialog, the new Video Folder controls resize/move correctly (5681).
- mm. Better maintaining Parent/Child window relationship with Dashboard and System Configuration dialog boxes.
- nn. Import/Export Project supports all of the various BRX MPU models (5616).
- oo. Reduced communication errors during Clear PLC operation, which writes to Flash ROM.
- pp. Added Validation to System Configuration.
- qq. Differences between PLC and Disk Ethernet Remote I/O configurations correctly identified.
- rr. Program Check rule for detecting Unassigned Nicknames at download time now detects them within "complex" instructions like MATH (5715).
- ss. Communication Server better handles <NAK> responses from PLC.

**Do-more Updates Rel 2.1.4 October 19, 2017, 2.1.3 October 12, 2017, 2.1.2/2.1.1 September, 2017**

- tt. Communication Server does not include Modem devices by default. Change the INI File setting `[devasync.dll] ModemEnable=1` to bring it back.
- uu. System Information/System Log dialog properly handles invalid log entries.
- vv. Print Script parser correctly reports string literals that exceed the maximum length, and reports scripts that are too long. This was happening in the new FILELOG instruction if you entered too many entries.
- ww. Better handling of large Trend Archive files (5431).
- xx. Browse Videos dialog remembers the column settings from one session to the next.
- yy. Cross Reference handles casts with array references. e.g. D[V0]:B3.
- zz. Create Nickname dialog handles structure fields with nicknames at the structure level (5827).
- aaa. Create Nickname dialog handles a constant parameter (5525).
- bbb. Documentation Editor's Add Record handles *Increment Nickname After Add* when the Nickname exceeds the maximum length (5830; thanks to MW@WSS).
- ccc. Documentation Editor's Add Record auto-increment feature handles casts (5702)
- ddd. Documentation Editor more stable (5279).
- eee. Migrate DirectSOFT Project no longer fails when the DirectLOGIC project contains an ECEMAIL instruction with an empty To: field, which is common when a long To: list is configured in the ECOM100 module itself (5828 – thanks to JS in Ohio).
- fff. Migrate DirectSOFT Project calculates DirectLOGIC's ONDTMR and OFFDTMR Preset as hundredths of a second (5251; thanks to SL@MWP).
- ggg. Resolve Online/Offline Differences dialog's description of Documentation content now lists *Project Notes* and *Ignored Program Check Rules*. These were always part of the Documentation, they just weren't mentioned here.
- hhh. View Manual and View Specs context menu items for GSE Drive modules in I/O Configuration dialog and I/O System View are working correctly (5322).
- iii. Manually changing GSE Drive type works correctly.
- jjj. Updated various Message Boxes that accessing the firmware download dialog can be done using the PLC->Update Firmware menu.
- kkk. Parent/Child Window ordering adjusted (5784, 5797).
- lll. Provide more information when a desired PLC operation fails due to the current User's Security Privileges being insufficient, for example "Cannot write data to PLC! Current user doesn't have Write Data (WD) security privilege" (4134).
- mmm. Export Element Documentation in the new C-more format WITH Struct Fields properly exports when you have checked *Also export USED elements which do not have a nickname* option (5793).
- nnn. Corrected the lookup of an instruction's absolute address (5473).
- ooo. Corrected ordering of the Element Picker dialog and the Create Data Block dialog (5879).
- ppp. Dynamic system and User Data Type schema size changes propagated to corresponding heap-items and memory data blocks (2.1.4) (5914).
- qqq. Corrected Program Check rule for Do-more Technology Version 2.1 validation of BRX Analog Module support (2.1.3).
- rrr. Ladder View – added status to Called Counter parameter in CALL instruction (2.1.2).



**Do-more Updates Rel 2.1.4 October 19, 2017, 2.1.3 October 12, 2017, 2.1.2/2.1.1 September, 2017**

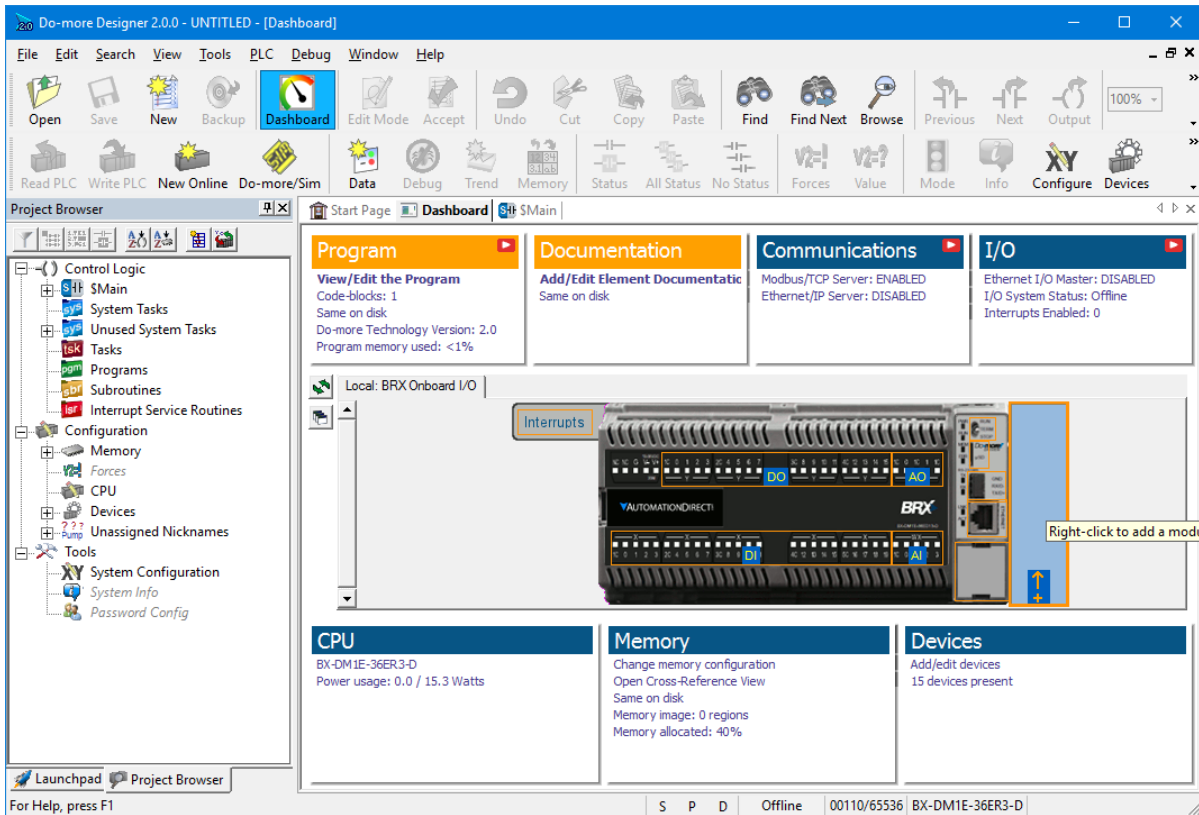
- sss. Added pop-up Help content for new 2.1 instructions **(2.1.2)**.
- ttt. Download Project dialog's *Prepend Project Notes* field word-wraps (5877) **(2.1.2)**.
- uuu. FILELOG correctly performs *Replace* operation (5878) **(2.1.2)**.
- vvv. Reworded Output Window Warning message when Designer's Memory Configuration is incompatible with the PLC's; it now tells you what to do to resolve this, specifically either Write Designer's project to PLC or Read the PLC's project into Designer, but also offer to open up Program Compare to help resolve differences just by double-clicking on the Warning in the Output Window.

## Do-more Updates Rel 2.0, February, 2017




The significant new feature in Do-more 2.0 is the introduction of the new BRX line of Micro PLCs. However, there are many cool features in 2.0 that enhance the entire product line. The first part of this document will highlight the new BRX platform and features; the last part of this document will highlight the common features across all Do-more platforms (205, Terminator, Simulator, and BRX).

Before diving into the new BRX line of PLCs, there are some key user interface enhancements which will help you with your work flow.



### Dashboard View

The new Dashboard view is a *one-stop-shop* for getting status of your PLC, configuring the “screw-head” centric pieces of your project along with configuring many other areas, and as a general software navigation tool. All the existing Menus, Toolbars, and Hot Keys are also still around and still work, so continue to use those if you like (however, even some “experts” have admitted to liking this new user interface!) It’s even more powerful if you have multi-monitors or a wide monitor and “tear it off” and access it outside the Designer window frame (see Float/Dock button  on view’s left-toolbar).

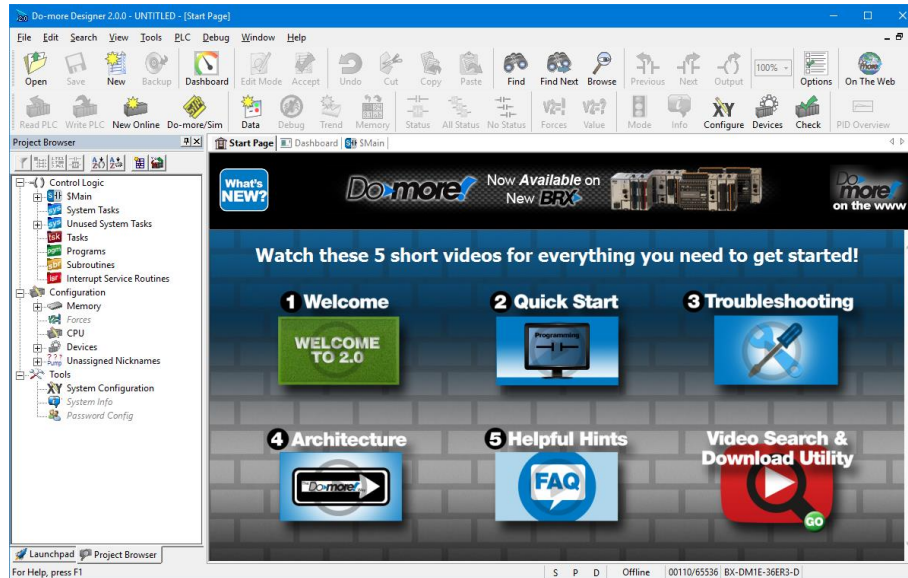
Float your mouse cursor over the picture of your PLC model and suddenly all the hot-spots are highlighted. Float over a hot spot to get general information about that specific area of the hardware. Right click on a hot spot to get a context specific menu. Left click on a hot spot and get a Pop-up Tip that will contain information and hot links to other areas of Designer related to that hot spot.

Each of the Panels that surround your PLC graphic relates to a specific area of your current project (Program, Documentation, Communications, I/O, CPU, Memory, Devices). Within each panel are

## Do-more Updates Rel 2.0, February, 2017

project status information items, most of which are also hot links. Again, float your cursor over each one to get more detailed status information about that item. Click on the hot linked items and it will either show a Pop-Up Tip with more navigation options, or will take you directly to the configuration/status dialog related to that item.

**Built-in Video Training** has been integrated into Do-more Designer, whether it's learning how to configure an analog module, or learning the basics of Designer 2.0, video help is *just 1 or 2 mouse clicks away*.




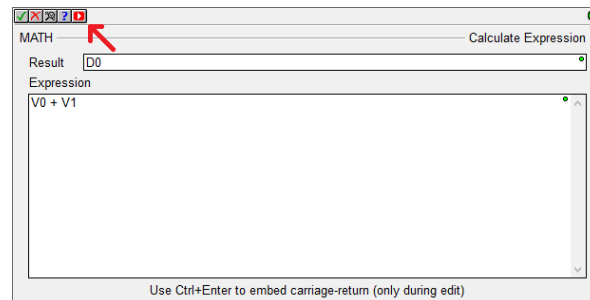
### New Start Page Videos

The Start Page has been changed to provide hot link buttons to play 5 new videos that will help you get up and running with Designer 2.0.

1. Welcome to Designer 2.0
2. How to Create a Simple Program
3. Troubleshooting Tips
4. Do-more PLC Architecture
5. Helpful Hints

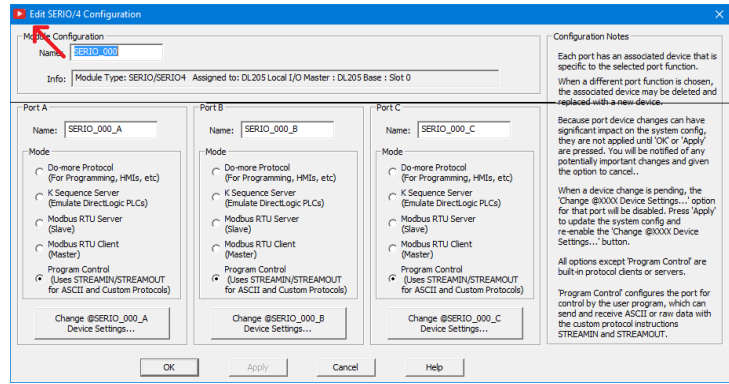
The 6<sup>th</sup> button lets you navigate, play and optionally download any/all the hundreds of short videos (details below).

If you ever see the red Play button  in the top toolbar of an instruction editor

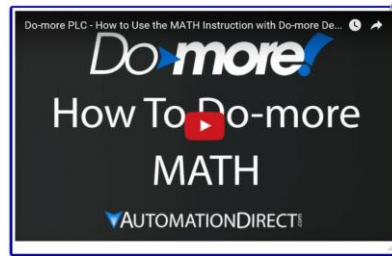


## Do-more Updates Rel 2.0, February, 2017

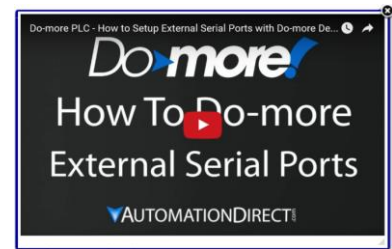
or in the top left corner of a dialog box



just click on it to play a short training video dealing with that specific instruction



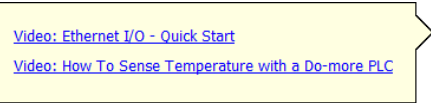
or the dialog box topic



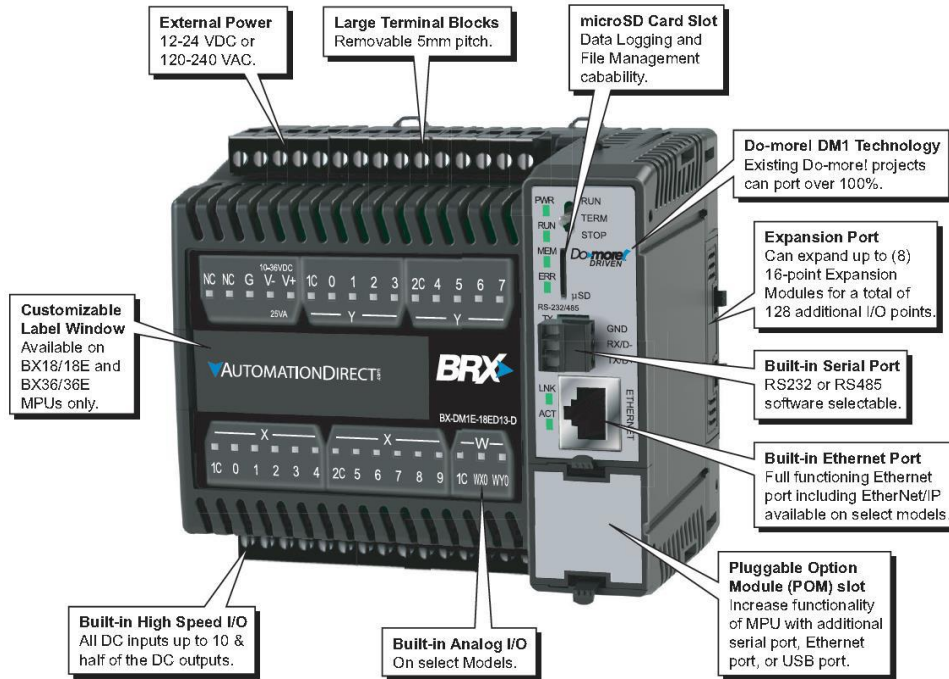
If you see the red Play button in the title of a Panel in the new Dashboard view...



...click on it to see a list of videos related to that panel



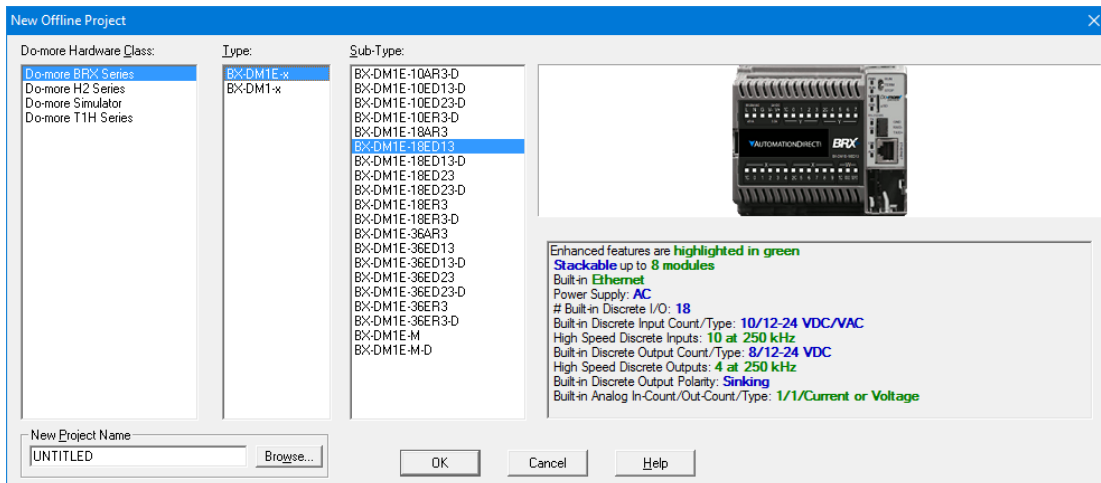
New BRX Micro line of PLCs



General BRX Micro PLC Features

All of the various **BRX Micro PLC Units** (MPUs) are stackable, with built-in Power Supply/CPU, varying in size from no onboard I/O, up thru 36 points of onboard I/O. Most MPUs support **up to 8 stackable modules, able to handle over 160 I/O locally** (Ethernet units can support *thousands* of I/O via Ethernet I/O). Many MPUs have *at least two analog I/O channels onboard*.

The mix of Power-Supply/Input Types/Output Types/Ethernet in the BRX line result in 38 different MPU models (sub-types). The new File->New->Offline Project dialog highlights the key differences between MPU sub-types, helping to make the selection easier. After selecting the BRX Hardware Class, then Ethernet vs. non-Ethernet Type, you get a list of all the possible MPU sub-types, with key specification features listed below a picture of the selected sub-type MPU model:



## BRX MPU Model Differentiation

The first differentiator in the BRX hardware class is onboard **Ethernet** vs. not (similar to the H2-DM1 and T1H-DM1 CPUs). All Ethernet models (BX-DM1E-x) are fully expandable up to 8 expansion modules, and most of them have at least 1 or 2 analog output channels and 1 to 4 analog input channels. The non-Ethernet models (BX-DM1-x) are value-priced, without the extra cost of the analog channels onboard and support for only 2 or 4 expansion modules.

The second differentiator is the **number of onboard Discrete I/O**.



None, 10, 18, and 36

The remaining differentiators are **Power-Supply** type (A/C vs. D/C) and **Onboard Discrete Input and Output** types (A/C, D/C, Voltage Level, Relay, Sinking vs. Sourcing).

## BRX Micro-SD Slot

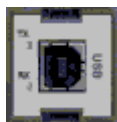
Every BRX MPU model has a micro-SD card slot for storing or accessing data files in standard disk format readable by PCs. New FILE\*\*\*\* instructions allow you to simply log data, or perform complete read/write file access. BRX also supports a second file system that is a RAM-drive (note: *all existing* H2 and T1H Do-more PLCs can also support a RAM-drive file system after a simple firmware upgrade to Do-more Technology Version 2.0 or later). The **EMAIL** instruction has been enhanced to allow you to add a **file attachment** from the BRX micro-SD card or a file from your existing H2-DM1E, T1H-DM1E, or new BRX RAM-drive file system.

## BRX Pluggable Option Module (POM) Slot

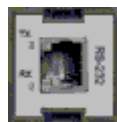
Every BRX MPU model contains a Pluggable Option Module (POM) slot. This slot is hot-swappable with various POM modules, allowing you to have dynamic functionality when needed (like during commissioning or maintenance), or as a permanent option:



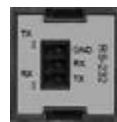
Ethernet



USB



RS-232 RJ-12



RS-232 3 Pin



RS-485



## BRX Expansion Modules

Initially, the BRX line of PLCs supports 27 different I/O modules (more modules planned):

- 10 different Discrete Input modules
- 12 different Discrete Output modules
- 5 different Discrete Input/Output Combination modules

Coming soon:

- 8 different Analog Input modules
- 4 different Analog Output modules

Other expansion modules are in-work and are planned to be released soon.

## BRX Onboard High Speed I/O

Most of the BRX models support some combination of High Speed Inputs and/or High Speed Outputs onboard (no extra cost). Both Input and Output frequencies support up to 250K Hz.

Specific Onboard **High Speed Input** features include

- High Speed **Counting** (Up, Down, Quad, Bi-directional, Up-Down)
- High Speed **Timing** (Single Edge, Dual Edge)
- **Interrupts** (Discrete Input Event of Rising/Falling/Either with optional Hi/Lo Level “permissives” of any/all other onboard inputs)

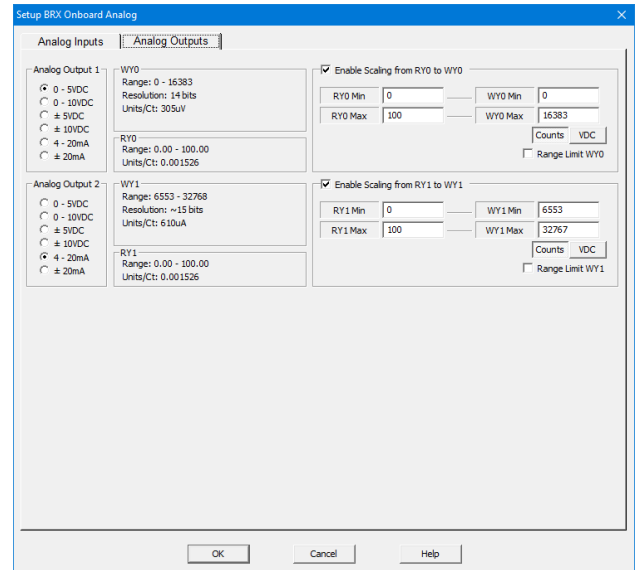
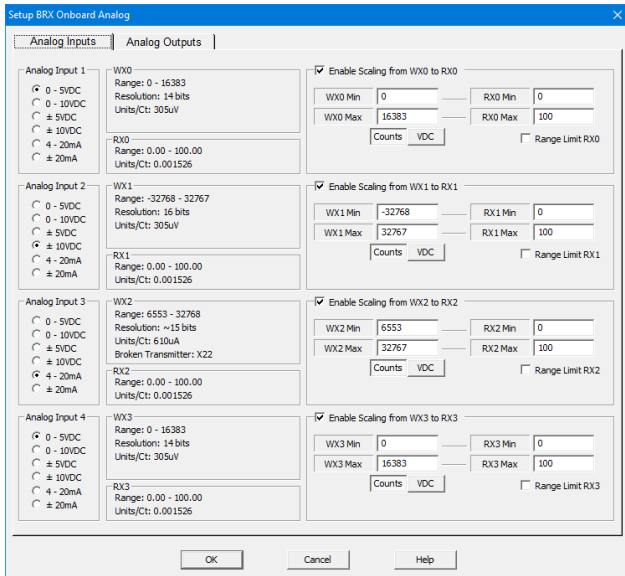
Specific Onboard **High Speed Output** features include

- **Axis Motion** (Step/Direction, Clock-wise/Counter-clock-wise, Quadrature emulation) using various AX\* instructions (AXJOG, AXHOME, AXPOSTRAP, AXPOSSCRV, AXVEL, AXGEAR, AXFOLLOW, AXCAM, et.al.); up to 4 Axis (1 virtual Axis, up to 3 tied to actual outputs)
- **Pulse Width Modulation** configured via the PWM structure members .Period and .DutyCycle
- **Table Driven Output** using TDO\* instructions (Programmable Limit Switch; Preset Table script of various Set, Reset, Toggle, Pulse On, Pulse Off after micro-second duration)

## BRX Onboard Analog Configuration

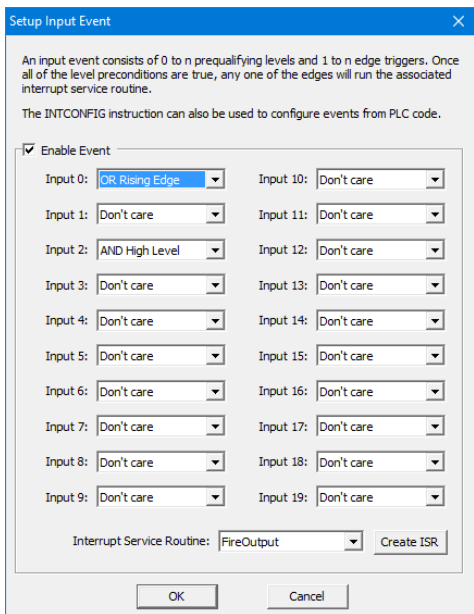
The BRX MPU units that come with onboard Analog Inputs and Analog Outputs let you **fully and independently configure each analog channel’s electrical characteristics**, so there is no need to qualify these when purchasing, or buy multiple module types for different signal types!

- current vs. voltage
- unipolar vs. bipolar
- voltage range
- resolution (14, 15, 16 bits)
- optionally scale WX analog input to new RX (Real Analog Input) data-block or from new RY (Real Analog Output) data-block to WY analog output, with or without clamping

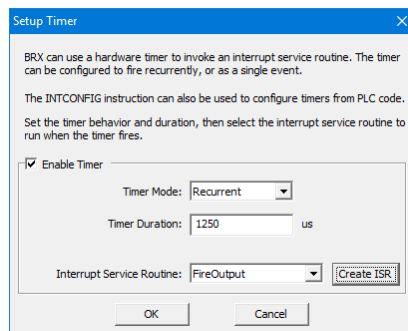


## BRX Interrupt Support

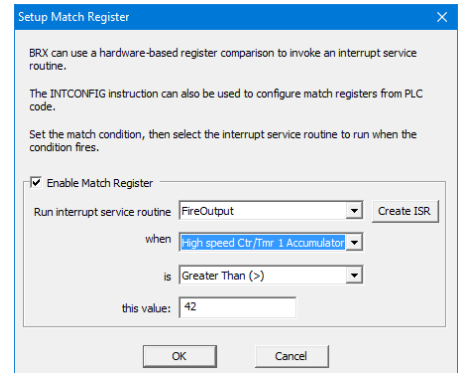
There are three different types of Interrupt Triggers: Discrete Input Events, Time, Match Register:



4 Input Event Triggers



4 Timed Triggers

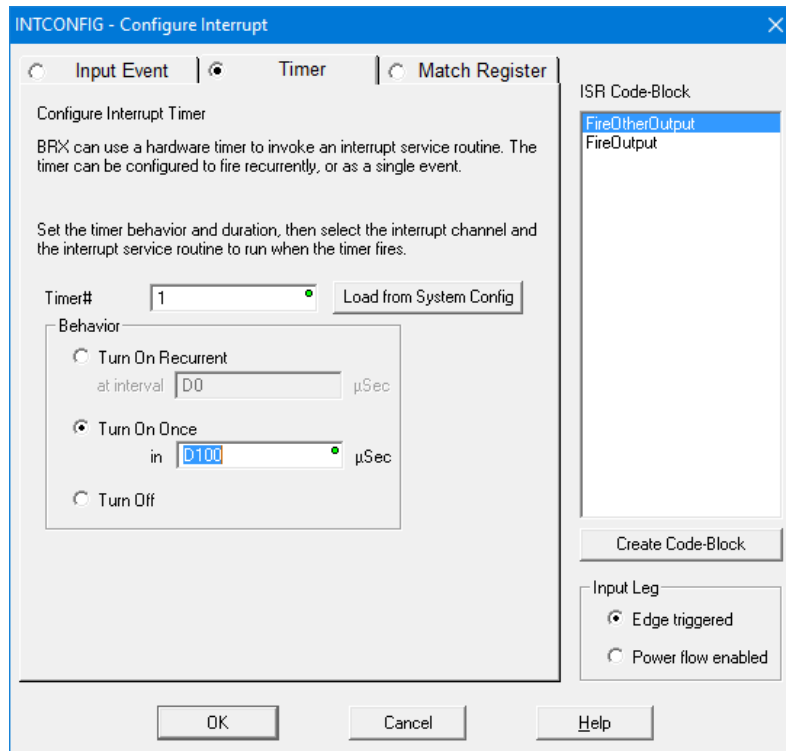


4 Match Register Triggers

**Interrupt Service Routines (ISRs)** are a new kind of code-block that get associated to a specific Trigger. Up to 20 ISR code-blocks are supported.

**Immediate Output Instructions** include **OUTI**, **SETI**, and **RSTI**, which are powerful within ISR code-blocks. There is no need for an Immediate Input Contact because every ISR execution gets a copy of the immediate onboard Discrete Input X state values upon being fired. So just use the “immediate” X's like you would any other X inside an ISR code-block.





### INTCONFIG – Configure Interrupt Instruction

The configuration of any Interrupt Trigger can be changed dynamically at runtime using the INTCONFIG - Configure Interrupt instruction, including remapping the associated ISR code-block. The INTCONFIG instruction can be used within an ISR code-block for some pretty powerful program control. For example:

- Dynamically control a high resolution discrete output using calculated timing values to reconfigure the Timed Event Trigger within the current ISR.
- Follow-up a Discrete Input Event with a calculated Timed Event Trigger within the Input Event ISR.
- Tweak the Match Register condition to the “next” Match Register condition within the ISR.
- Any combination of Trigger settings and/or ISR code-block binding

Other Interrupt instructions include INTSUSPEND – Suspend Interrupts, INTRESUME – Resume Interrupts, and INTDECONFIG – Deconfigure Interrupt Trigger Resource.

### High Speed I/O

CTRIO functionality for BRX platform has been replaced with the following onboard resources that come with nearly every BRX MPU model:

- Counter/Timer Functions
- Axis/Pulse Outputs
- Pulse Width Modulation
- Table Driven Output

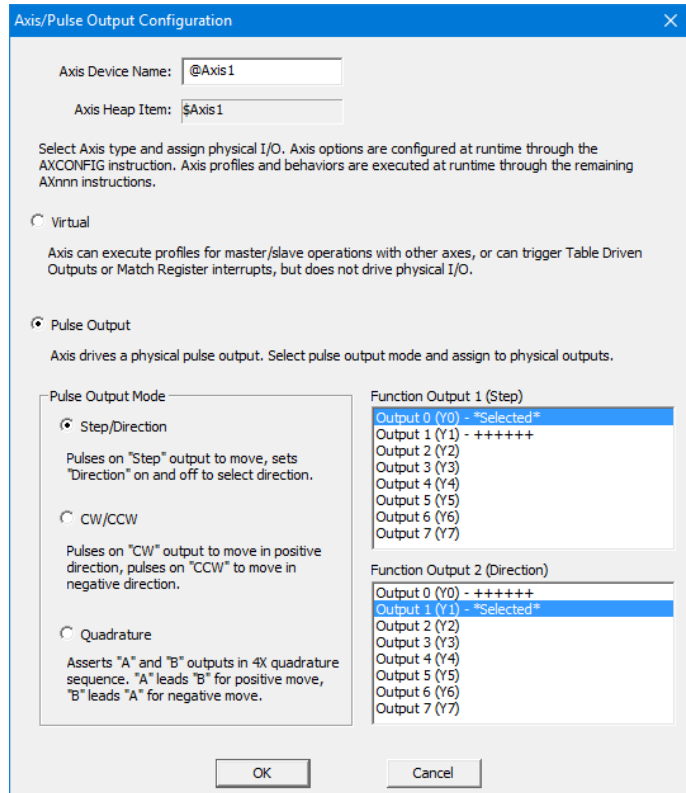
### New Motion Control: Axis

Every BRX MPU model supports up to 3 Axis Pulse Output resources (a fourth Axis is permanently “Virtual”, meaning it cannot be tied to any physical pulse outputs, but can still be used to generate logical pulse counts using any of the AXIS\* instructions, just like the other “hard-wired” axis).

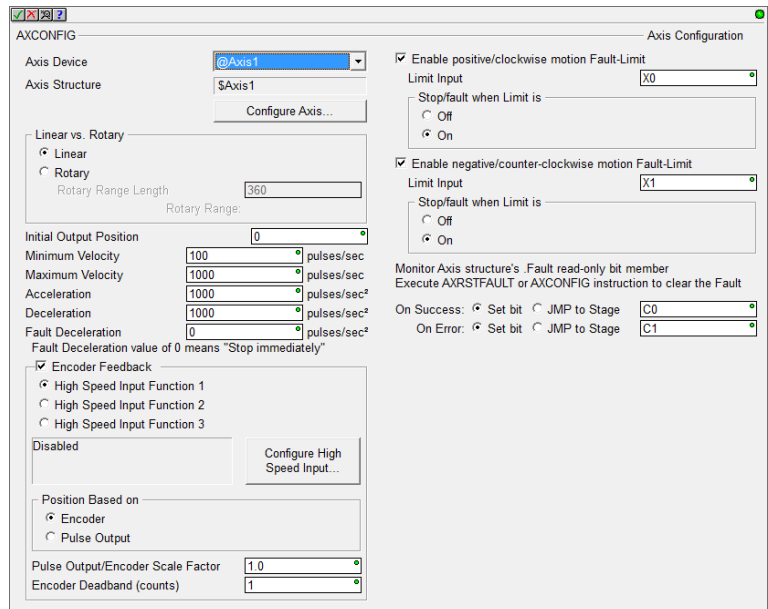
Each Axis can be configure as:

- Virtual (does not drive any physical I/O)
- Pulse Output **Step and Direction**
- Pulse Output **Clockwise/Counter Clockwise** Selection
- Pulse Output **Quadrature** (emulates a 4x quadrature sequence)

Except for Virtual, the other modes physically bind to two different onboard Discrete Y outputs.



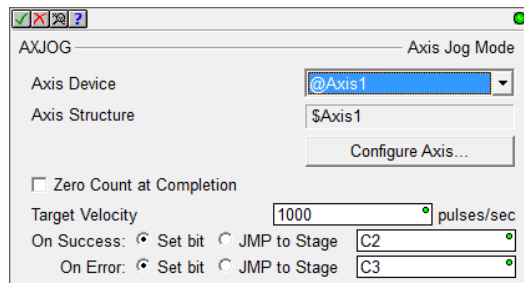
At runtime, the detailed configuration of an AXIS must be configured using the AXCONFIG – Configure Axis instruction.



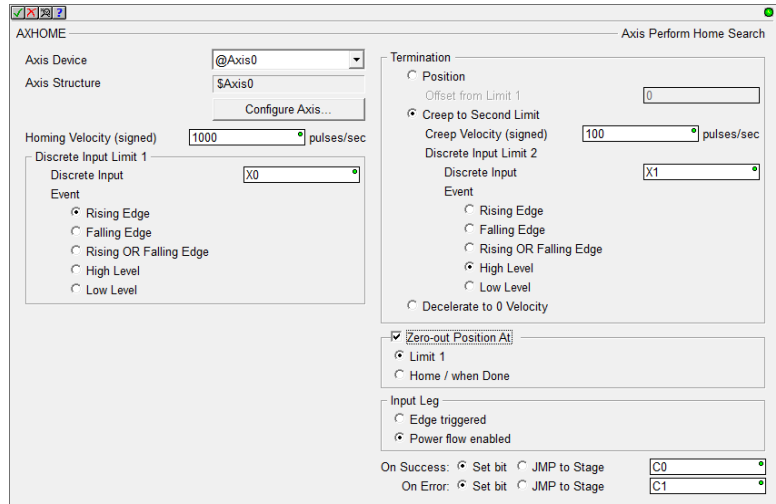
**AXJOG – Axis Jog Mode**

It is a 3-input leg instruction to perform a simple “jog”. The input legs are

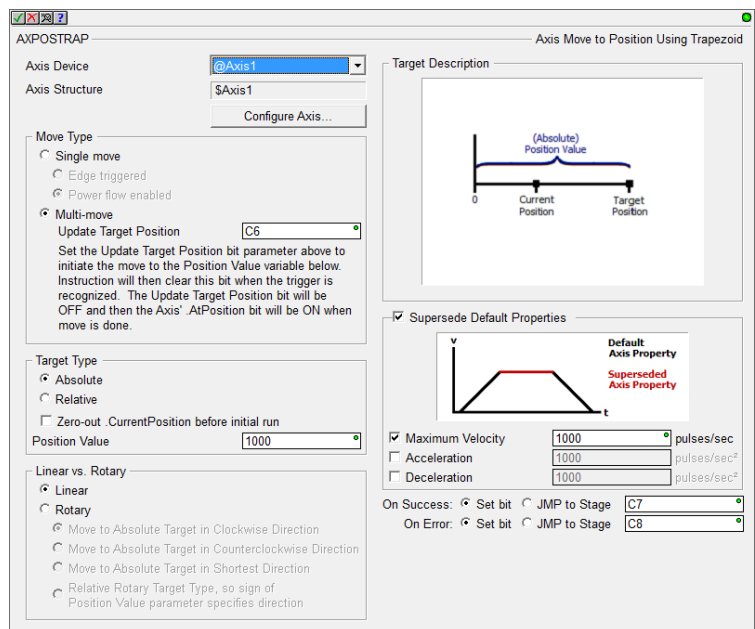
1. Enable/Reset
2. Forward
3. Reverse



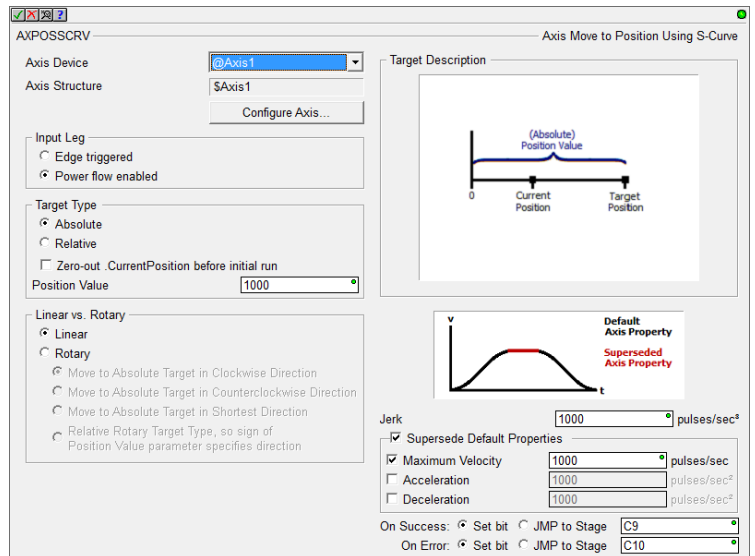
AXHOME – Axis Perform Home Search



AXPOSTRAP – Axis Move to Position Using Trapezoid



AXPOSSCRV – Axis Move to Position Using S-Curve



AXVEL – Axis Set Velocity Mode

AXVEL – Axis Set Velocity Mode

Axis Device: @Axis1  
 Axis Structure: \$Axis1  
 Using Velocity Value in: \$Axis1.TargetVelocity

Initialize .TargetVelocity (signed): 100 pulses/sec

Acceleration/Deceleration Mode:

Trapezoid Accel/Decel  
 S-Curve Accel/Decel  
 None (Instantaneous)

Jerk: 1000 pulses/sec<sup>3</sup>

Supersede Acceleration: 1000 pulses/sec<sup>2</sup>  
 Supersede Deceleration: 1000 pulses/sec<sup>2</sup>

On Success:  Set bit  JMP to Stage C11  
 On Error:  Set bit  JMP to Stage C12

AXGEAR – Axis Electronic Gearing

AXGEAR – Axis Electronic Gearing

Axis Device: @Axis1  
 Axis Structure: \$Axis1

Master Register: Axis 0 Position (@Axis0)  
 Non-Axis Master Filter Time: 0.1 sec.

Gear Ratio Multiplier: 1.5

On Success:  Set bit  JMP to Stage C11  
 On Error:  Set bit  JMP to Stage C12

AXFOLLOW – Axis Position Following with Offset

AXFOLLOW – Axis Position Following with Offset

Axis Device: @Axis1  
 Axis Structure: \$Axis1

Master Register: Axis 0 Position (@Axis0)  
 Non-Axis Master Filter Time: 0.1 sec.

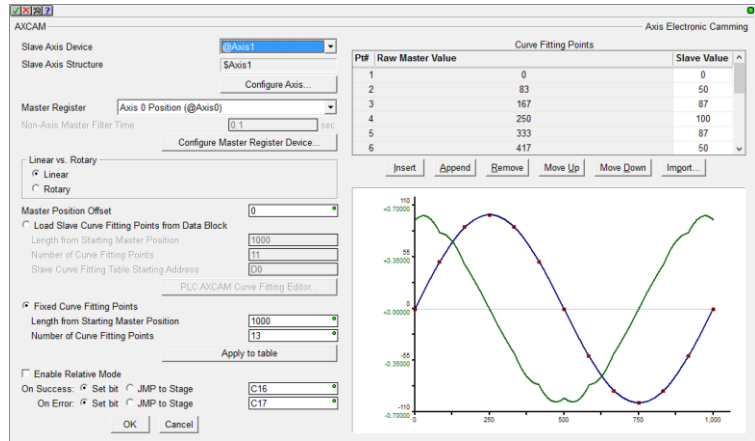
Gear Ratio Multiplier: 1.0  
 Relative Offset Position: D0  
 Relative Offset Velocity: D1  
 Goto Offset Signal: C13

On Success:  Set bit  JMP to Stage C14  
 On Error:  Set bit  JMP to Stage C15

## Do-more Updates Rel 2.0, February, 2017

### AXCAM – Axis Electronic Camming

The AXCAM instruction also has an online tool for easily editing/graphing PLC Memory based Curve Fitting Points. Access it via the PLC->Axis Cam Table menu.



### AXSETPROP – Set Axis Properties

**AXSETPROP – Set Axis Properties**

Axis Device: @Axis1  
 Axis Structure: \$Axis1  
 Position: 0

Minimum Velocity: 100 pulses/sec  
 Maximum Velocity: 1000 pulses/sec  
 Acceleration: 1000 pulses/sec<sup>2</sup>  
 Deceleration: 1000 pulses/sec<sup>2</sup>  
 Fault Deceleration: 0 pulses/sec<sup>2</sup>  
Fault Deceleration value of 0 means "Stop immediately"

Pulse Output/Encoder Scale Factor: 1.0  
 Encoder Deadband (counts): 1

On Success:  Set bit  JMP to Stage C18  
 On Error:  Set bit  JMP to Stage C19

### AXRSTFAULT – Reset Axis Limit Fault

**AXRSTFAULT – Reset Axis Limit Fault**

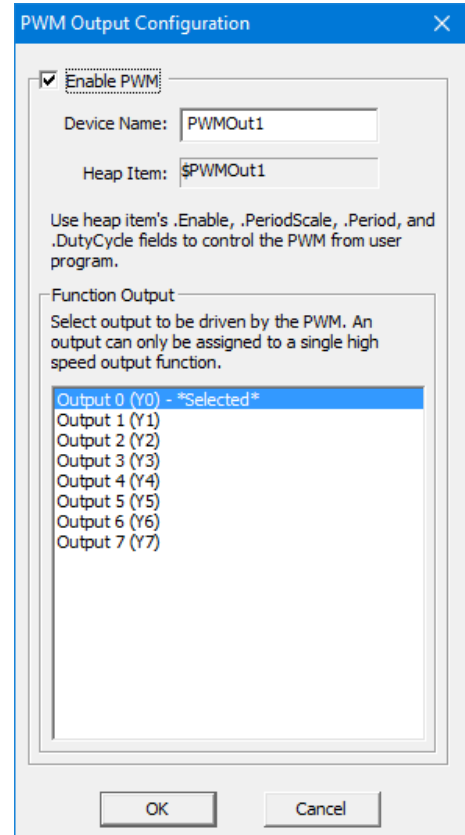
Axis Device: @Axis1  
 Axis Structure: \$Axis1

On Success:  Set bit  JMP to Stage C20  
 On Error:  Set bit  JMP to Stage C21

## Pulse Width Modulation

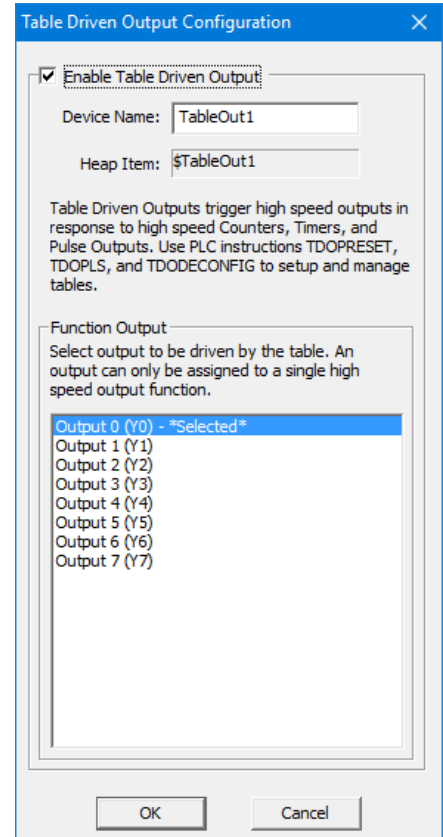
Each BRX MPU supports up to 3 onboard Hardware Accelerated High Speed Output PWMs to precise microsecond or millisecond resolution. Once the PWM Output is configured, use the PWM's heap item's structure fields to control the PWM from your logic:

- .Enable
- .PeriodScale (bit 0: microsecond, 1: millisecond)
- .Period (time value 0 to 65535)
- .DutyCycle (real percentage 0.0 to 100.0)



## Table Driven Output (TDO)

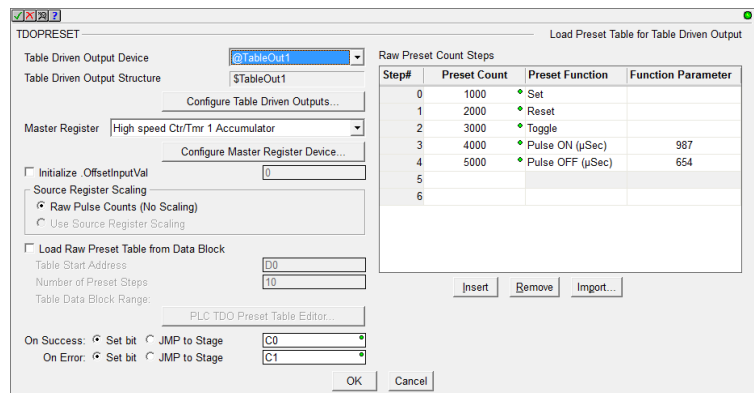
BRX supports up to 4 onboard Hardware Accelerated Table Driven High Speed Outputs in response to high speed Counters, Timers, and Pulse Outputs.



Use the TDOPRESET – Load Preset Table for Table Driven Output or the TDOPLS – Load Programmable Limit Switch Table for Table Driven Output instructions to drive the high speed discrete outputs.

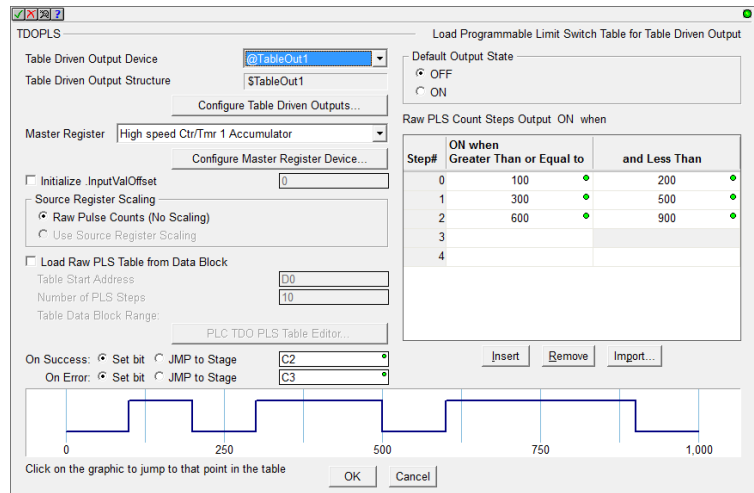
### TDOPRESET – Table Driven Output Preset Table

The TDOPRESET instruction also has an online tool for easily editing PLC Memory based TDO Preset Table. Access it via PLC->TDO Preset Table menu.

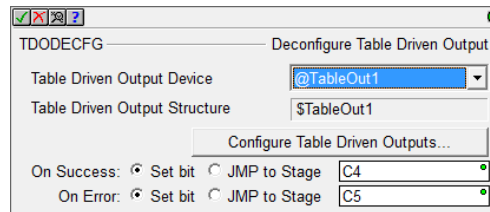


### TDOPLS – Load Programmable Limit Switch Table for Table Driven Output

The TDOPLS instruction also has an online tool for easily editing and graphing PLC Memory based TDO PLS Table. Access it via PLC->TDO PLS Table menu.



### TDODECFG – Deconfigure Table Driven Output

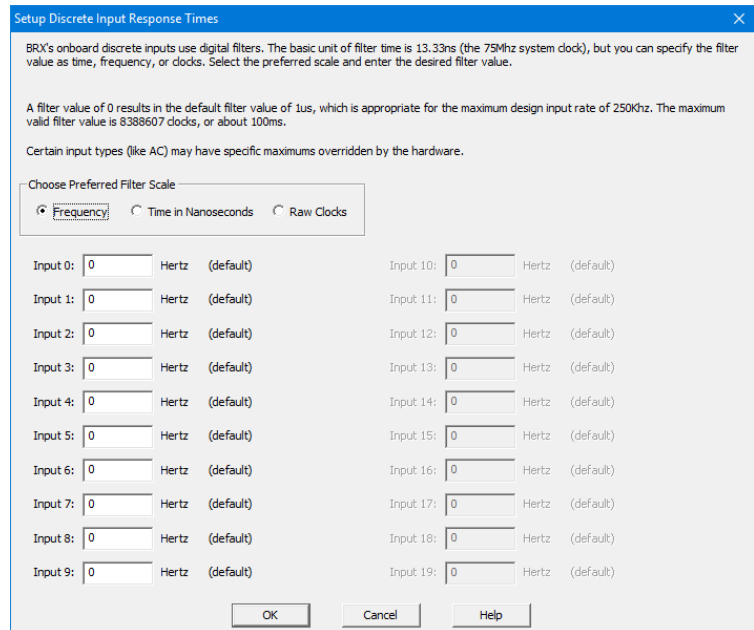


### Configurable Discrete Input Filters

The onboard Discrete Inputs response times are configurable on every BRX MPU. Many of the MPU models' Discrete Inputs support very high frequency at the hardware level (up to 250K Hz). These response times can be configured through the System Configuration's **Setup Discrete Input Response Times** dialog.

You can enter the filter in any of 3 different scales:

- Frequency
- Time in nanoseconds
- Raw Clocks



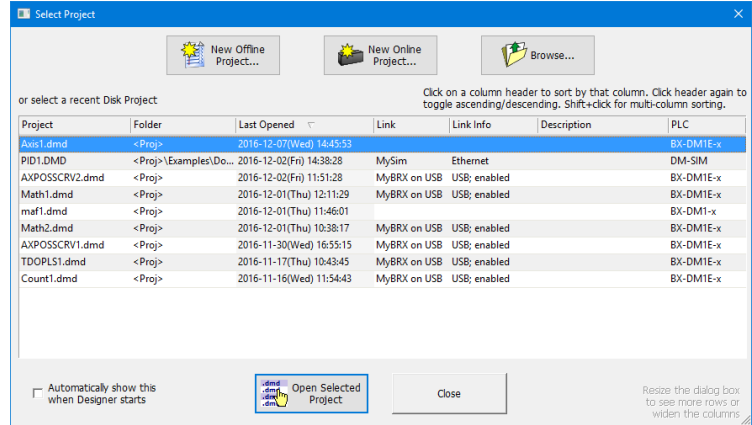


## New Features in Designer 2.0 for All PLC Lines, including Do-more Technology Version 2.0

The new **Select Project** dialog is the *Launch Pad on steroids*. It lists all your recent projects sorted by the Last Opened date by default, so your most recent projects are near the top.

You can sort by any of the columns, not just Last Opened:

- Project name
- Folder
- Last Opened date/time stamp
- Link name
- Link Information
- Link Description
- PLC type



You can also create a New Offline Project, a New Online Project, or Browse to open up an unlisted project file.

The dialog box is resizeable, so if you have the screen real estate, feel free to enlarge the dialog and widen those columns. It remembers its location and sizes so that once you set it up, it will remember from launch to launch. It automatically shows up at start-up, but you can disable that functionality by UNchecking the checkbox in the lower left corner.

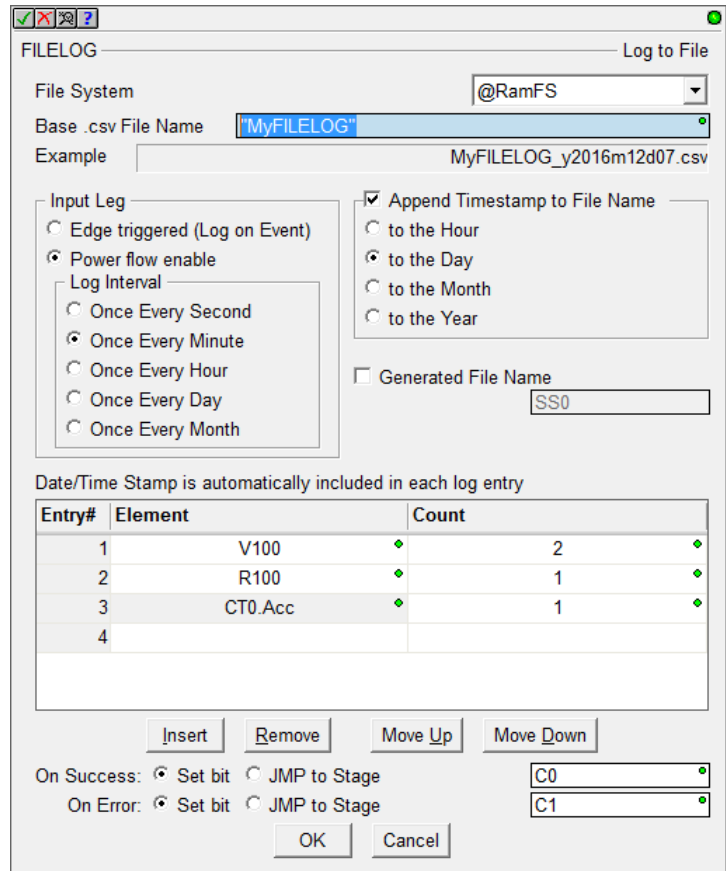
### RAM Drive File System (DmT 2.0)

Do-more Technology Version 2.0 added a RAM Drive File System, so existing H2-DM1x, T1H-DM1x CPUs can support the new FILE\* instructions with a simple firmware upgrade (BRX supports it out of the shoot; includes FILELOG, FILEOPEN, FILEREAD, FILEWRITE, FILECLOSE, FILEDEL, FILECOPY, FILENEWFLDR, FILEQUERY, FILESYSCMD, FILESEEK, FILETRUNC).

The **most useful** FILE instruction is the new **FILELOG – Log to File** instruction. It makes data logging very simple, but very configurable.

The most common requirement is that you need a specific set of data points to be logged at a specific interval (once a day, once an hour, once a minute, etc.). Each FILELOG instruction lets you specify the desired interval and set of data points.

You can mangle the name of the .csv file starting with a “Base” .csv (Comma Separated Variable text file) name, appending the Date/Time stamp to the nearest hour, day, month, or year (e.g. “MyFILELOG” to the nearest day: MyFILELOG\_y2016m12d07.csv). This is optional.



After uploading the file using the Browse PLC File System dialog to your PC, the resulting file contains a header line showing the PLC variable names, but always starts with the current Date/Time stamp. Then it will have all the log entries for each day/hour/minute/whatever. The example to the right may look like:

```
"TimeStamp(sec,local)", "V100", "V101", "R100", "CT0.Acc"
2016/12/7 18:09:00, 42, 256, 3.14, 199
2016/12/7 18:10:00, 43, 301, 3.14, 211
2016/12/7 18:11:00, 57, 301, 2.82, 0
```

The .CSV text file can be easily opened by Excel or Notepad or imported by most database programs.

You can also just log data on an event, not a periodic time interval. Just change the Input Leg setting to Edge Triggered from Power Flow. Also, the Base .csv File Name can be a generating STRING element (e.g. SS42) in case you want to come up with your own naming convention. Just use STRPRINT to write to SS42.

Finally, if you want to attach these .CSV log files to an EMAIL, the Generate File Name checkbox will come in handy to plug the Attachment file name in the EMAIL instruction (e.g. SS5 for the Generate File Name parameter would contain MyFILELOG\_y2016m12d07.csv from the first example above, then use SS5 in your EMAIL instruction’s “Attach File Name” parameter.

If you want to do your own FILE I/O calls, the breadth and depth is typical. Note that not every file system command is supported – this is a PLC not a PC, and some of those commands could take a LONG time, like removing a folder. Hence, Remove Folder is not supported by Do-more. But if it’s

## Do-more Updates Rel 2.0, February, 2017

removable media, you can remove it from your PLC and put it on a PC and still do everything you want to do from your PC (remove folders, format the media, run diagnostics, etc.).

### FILEOPEN – Open File

The FILEOPEN dialog box is titled "FILEOPEN" and "Open File". It contains the following fields and options:

- File System:** A dropdown menu set to "@RamFS".
- File Name:** A text field containing "MyLog.txt".
- Mode:** A group box with three radio buttons: "Read" (selected), "Write (Create/Append if exists)", and "Write (Create/Overwrite if exists)".
- File Handle Struct:** A dropdown menu set to "FILE\_0". Below it is a note: "To create a new <FILE\_HANDLE> heap-item, just enter the new name to create it when you enter the FILEOPEN instruction."
- On Success:** Radio buttons for "Set bit" (selected) and "JMP to Stage", with a dropdown menu set to "C0".
- On Error:** Radio buttons for "Set bit" (selected) and "JMP to Stage", with a dropdown menu set to "C1".

### FILEREAD – Read from File

The FILEREAD dialog box is titled "FILEREAD" and "Read from File". It contains the following fields and options:

- File Handle Struct:** A dropdown menu set to "FILE\_0". Below it is a note: "To create a new <FILE\_HANDLE> heap-item, just enter the new name to create it when you enter the FILEREAD instruction."
- Complete when...:** A group box with two checked options: "Length is 128 bytes OR" and "Delimiter(s) received OR".
  - Under "Length is 128 bytes OR": A text field containing "128".
  - Under "Delimiter(s) received OR": A dropdown menu set to "2", and three radio buttons: "Exact sequence" (selected), "Any one delimiter(s)", and "Trim Delimiter(s) from Output String".
  - Below the radio buttons are three text fields: "0x0D", "0x0A", and "0x00".
- Data Destination:** A group box with two radio buttons: "String Structure" (selected) and "Numeric Data Block".
  - Under "String Structure": A dropdown menu set to "SS0".
  - Under "Numeric Data Block": A "Create Byte Buffer..." button, and three text fields: "Start Address" (D0), "Buffer Size in Bytes" (64), and "Number of Bytes Read" (D1).
- On Success:** Radio buttons for "Set bit" (selected) and "JMP to Stage", with a dropdown menu set to "C0".
- On Error:** Radio buttons for "Set bit" (selected) and "JMP to Stage", with a dropdown menu set to "C1".

### FILEWRITE – Write to File

The FILEWRITE dialog box is titled "FILEWRITE" and "Write to File". It contains the following fields and options:

- File Handle Struct:** A dropdown menu set to "FILE\_0". Below it is a note: "To create a new <FILE\_HANDLE> heap-item, just enter the new name to create it when you enter the FILEWRITE instruction."
- Data Source:** A group box with two radio buttons: "String Structure" (selected) and "Numeric Data Block".
  - Under "String Structure": A dropdown menu set to "SS0".
  - Under "Numeric Data Block": A "Create Byte Buffer..." button, and two text fields: "Buffer Start" (D0) and "Number of Bytes to Output" (64).
- On Success:** Radio buttons for "Set bit" (selected) and "JMP to Stage", with a dropdown menu set to "C0".
- On Error:** Radio buttons for "Set bit" (selected) and "JMP to Stage", with a dropdown menu set to "C1".

### FILECLOSE – Close File

The FILECLOSE dialog box is titled "FILECLOSE" and "Close File". It contains the following fields and options:

- File Handle Struct:** A dropdown menu set to "FILE\_0".
- On Success:** Radio buttons for "Set bit" (selected) and "JMP to Stage", with a dropdown menu set to "C2".
- On Error:** Radio buttons for "Set bit" (selected) and "JMP to Stage", with a dropdown menu set to "C3".

FILEDEL – Delete File

FILECOPY – Copy File

FILENEWFLDR – Make New Folder  
(note that there is no *Remove Folder* instruction)

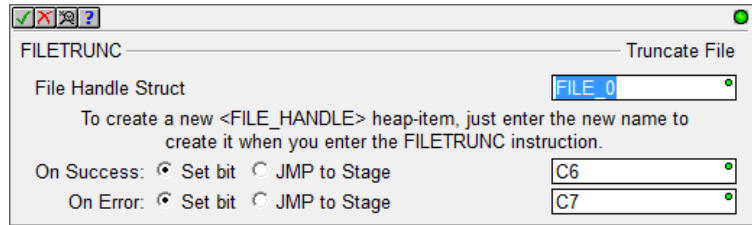
FILEQUERY – Query File or Folder Information

This instruction lets you get detailed information on any File or Folder. You can also use it to perform a “directory” operation to iterate all the files in a folder. The FILEQUERY Help Topic DMD0388 shows an example on how to iterate a folder.

FILESEEK – Seek to Position in File

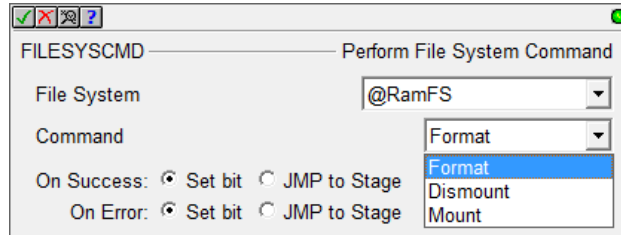
You can seek to specific positions (Beginning, Current, or End) or an offset from those positions.

FILETRUNC – Truncate File



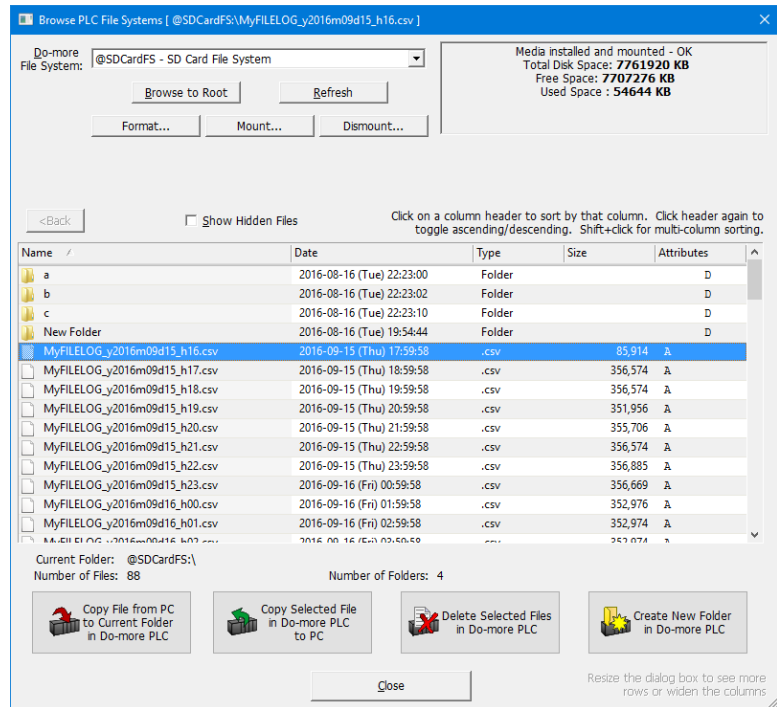
FILESYS\_CMD – Perform File System Command

- Format (RAM Drive Only)
- Dismount
- Mount



It is very useful to programmatically Dismount the SD Card before an operator tries to remove the media. The PLC's MEM LED will be RED when it is fully dismounted and safe to remove the media.

Browse PLC File Systems Dialog (DmT 2.0)



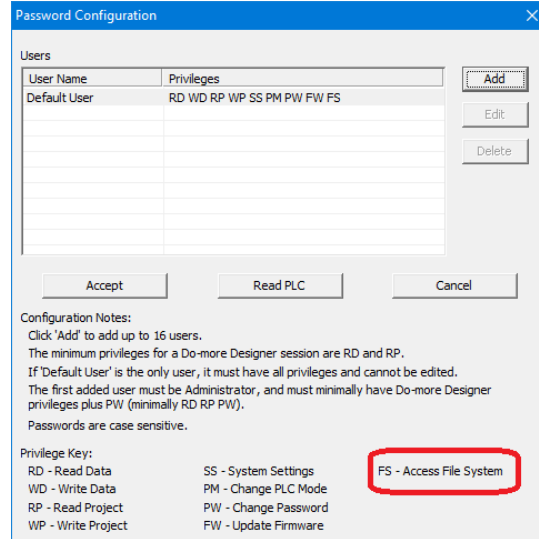
This dialog lets you explore the SD Card and RAM Drive file systems in your Do-more PLC. You can copy files between your PC and PLC in both directions.

(see PLC->Browse PLC File Systems)

## New Designer Security Credential: Access to File System (FS)

The Browse PLC File Systems dialog cannot be used by a Designer user whose credentials does not include File System (FS).

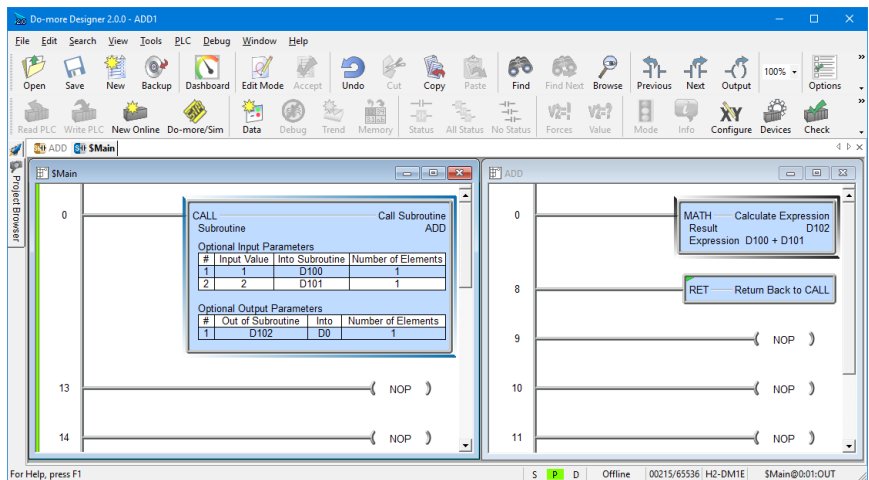
If any of your existing projects utilize Designer's Session Password facility that includes more than just the one Default User, you will have to manually add this privilege to any existing users that you wish to grant access to the File System.



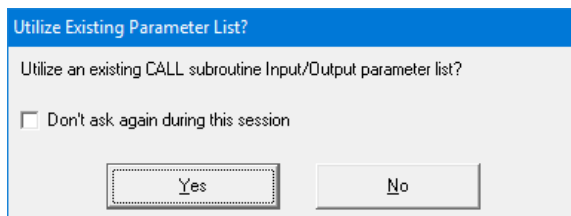
## Subroutine Code-Blocks (DmT 2.0)

All Do-more PLCs can support callable Subroutine code-blocks once their firmware has been updated to at least Do-more Technology Version 2.0. The CALL instruction supports passing input parameters and returning output parameters "by value" through the global image register memory. There is no actual "stack" for the parameter passing, just the CALL client side values are copied into the Subroutine's Input parameters before calling the subroutine. Then after returning from the called subroutine, the Subroutine's Output parameters are copied into the client side CALL elements. The stack DOES handle pushing the current CALL instruction address on the stack, and the Subroutine's Return/Conditional Return instructions does the clean-up, so nesting CALLs IS supported (up to 82 levels of nested CALLs), but the parameters are NOT placed on the stack.

For example, you can create an ADD subroutine that takes 2 input parameters and 1 output parameter. The Subroutine reserves and uses the D100 and D101 registers for the two Addends, and D102 for the Add Result. You can then CALL the ADD subroutine with 1, 2 and D0 to get the result of 3 in D0.



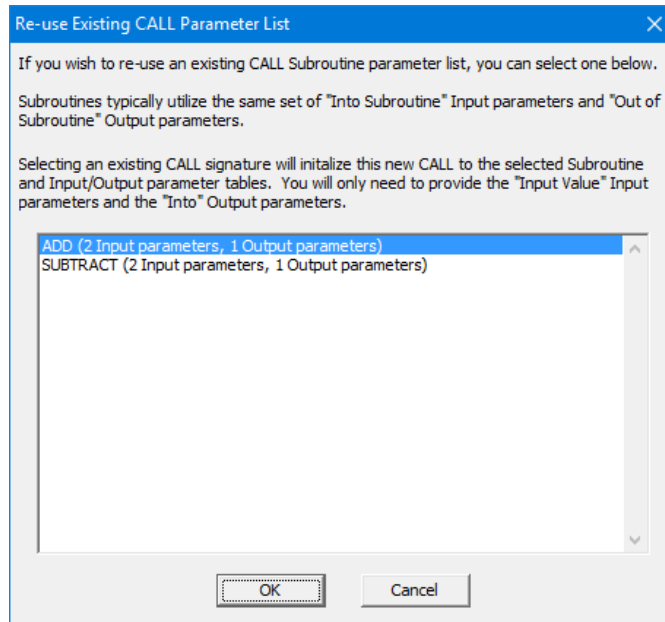
Now say you want to add 4 and 5 together and store that in D1, you probably want to re-use your nifty new "ADD box" that you just created,. Normally, you would need to remember that ADD uses



## Do-more Updates Rel 2.0, February, 2017

D100 and D101 for the two input parameters, and D102 for the one output parameter.

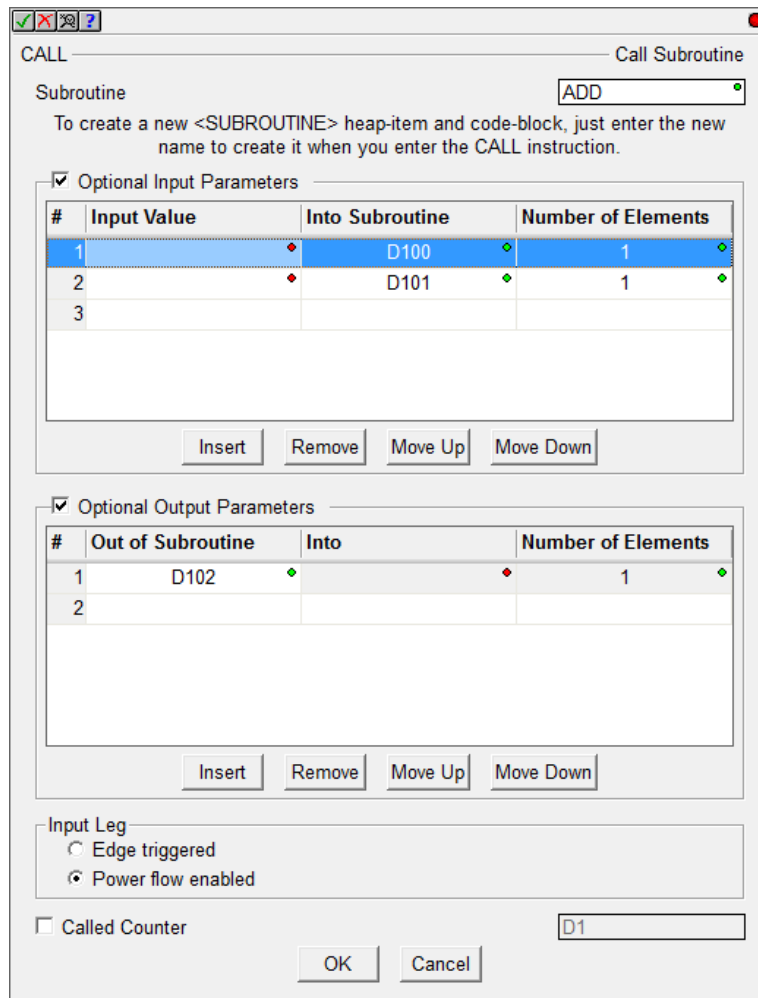
So after you pick a new CALL instruction, Designer knows that Subroutines are meant to be re-used, so it asks you if you want to re-use an existing CALL signature for the Subroutine-side parameters for this new CALL box, and let you fill out the CALL-side parameters:



After hitting OK, you are given a more-than-half-filled-out CALL instruction.

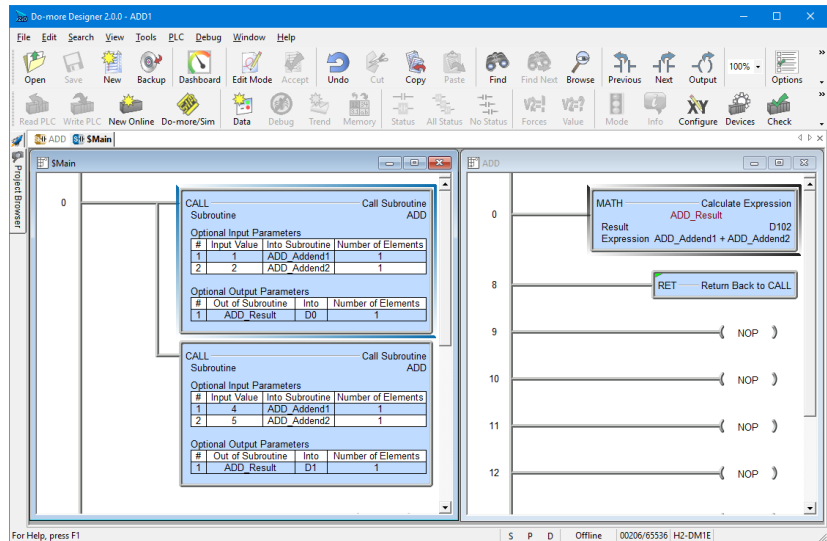
The Subroutine name, the Subroutine's side Input and Output parameters are all filled out.

All that's left to do is fill out the three "red dot" empty parameters that are the "caller side" parameters (in this case, they will be 4, 5, and D1)

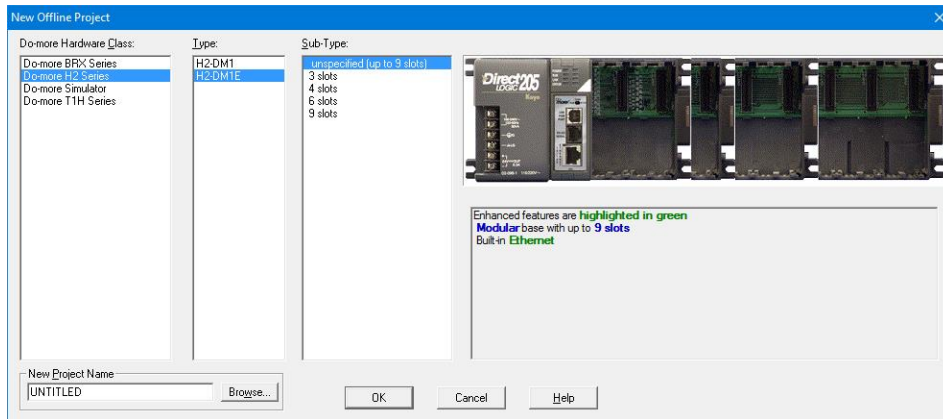




It's also good design to assign Nicknames to the global Subroutine input/output parameters, then your CALL instruction signature and Subroutine logic looks even better (e.g. ADD\_Addend1, ADD\_Addend2, ADD\_Result for D100, D101, and D102, respectively):



### Enhanced New Offline Project Dialog



There is now a third selection level, PLC Sub-Type, which became necessary when the BRX was added due to the model/feature breadth of that new line. By adding PLC Sub-Type, this also allows for 205 Base Type selection, including an option of “unspecified”.

The dialog also reports on general features of the specific sub-type selected, highlighting key features in green (like built-in Ethernet, or onboard analog I/O or ...; see other example in the BRX section above).



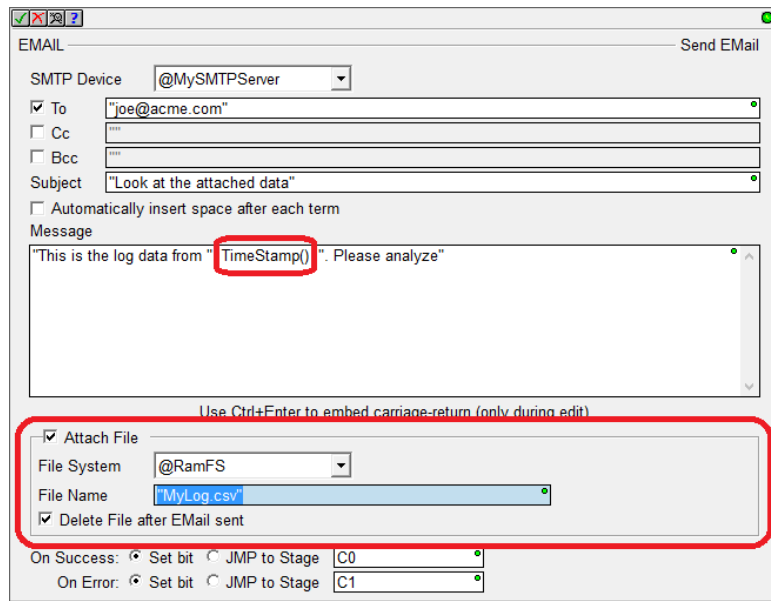
## New Instructions and Instruction Enhancements

With the addition of a RAM Drive File System to all existing Do-more PLCs with just a simple firmware upgrade, the existing **EMAIL** instruction was enhanced to add some optional parameters for **sending attachments**.

A new **STRPRINT/EMAIL** Print Script command was created called **TimeStamp()** that optionally takes two parameters.

Resolution: min or sec (default) or tenths or hundredths or thousandths.

Clock-Time-Type: local (default) or utc



The format of the date portion is always YYYY/MM/DD. The format of the time portion is 24-hour, down to the specified resolution. So the default is local time to seconds resolution, for example:

2016/12/31 23:59:59

If you need more detailed formatting capabilities, use the existing `FmtDate()` and `FmtTime()` script commands.

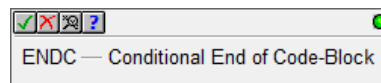
There is another **STRPRINT/EMAIL** Print Script command called **Fill()** that repeats the same character multiple times. It takes 2 parameters:

Fill-character/byte as hexadecimal constant 0x00..0xFF

Fill-length (integer element or constant)

So, `Fill(0x20, 80)` would generate 80 spaces (0x20 is the ASCII hexadecimal constant for a space).

ENDC – Conditional End of Code-Block



ENDC can be utilized in any PROGRAM, TASK or ISR code-block type. Although END coils are not required by Do-more PLCs, the Conditional End within an Interrupt Service Routine is commonly needed to help keep the ISR running as fast as possible.

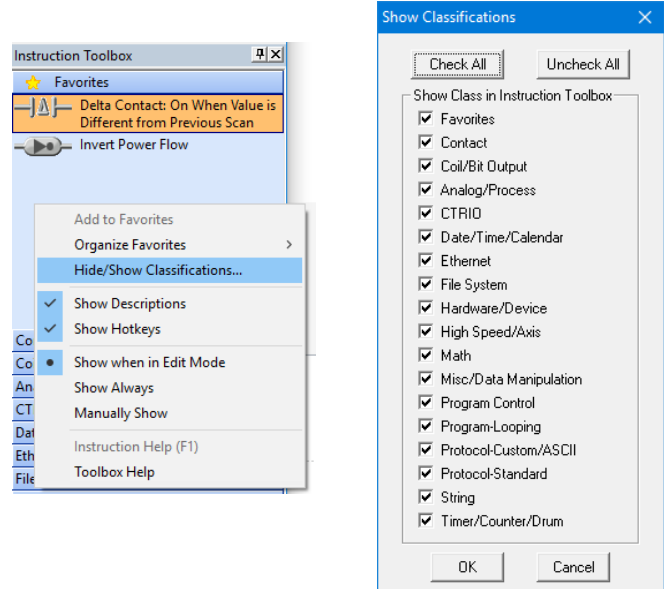
Also, it is sometimes helpful to use END/ENDC for debug purposes to block out code execution in a PROGRAM or a TASK. The ENDC box lets you do perform the End conditionally based on the input contact power flow state of the rung.

Note that ENDC is different than the EXIT instruction in that ENDC can only end the current logic scan of that code-block, it does NOT end the execution of that code-block for subsequent scans, like EXIT does.

## Instruction Toolbox

You can now hide any set of instruction classifications that you don't ever use, freeing up more screen space in the Toolbox for the instructions that you do use.

Just right click on the Instruction Toolbox and select Hide/Show Classifications, then UNcheck the classes you don't ever use in the Show Classifications dialog box.



Moved CTRIO set of instructions to its own Instruction Class.

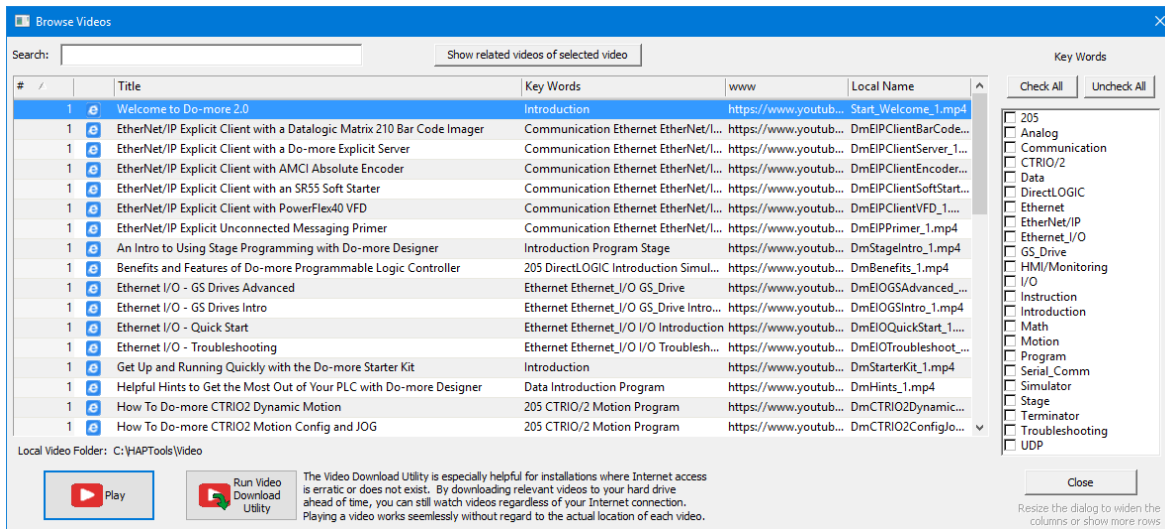
Added a higher level **Download Firmware dialog** accessed via the PLC menu, PLC toolbar, and Dashboard view. You can still download firmware from the System Information dialog.

### New System Words (DSTs)

DST50	\$InstalledPOM	
DST53	\$PLCSubType	
DST54	\$POMIpSetupSrc	see Help Topic DMD0208
DST55	\$POMIpAddress	<i>System Nickname Locations</i>
DST56	\$POMIpNetmask	for details
DST57	\$POMIpGateway	

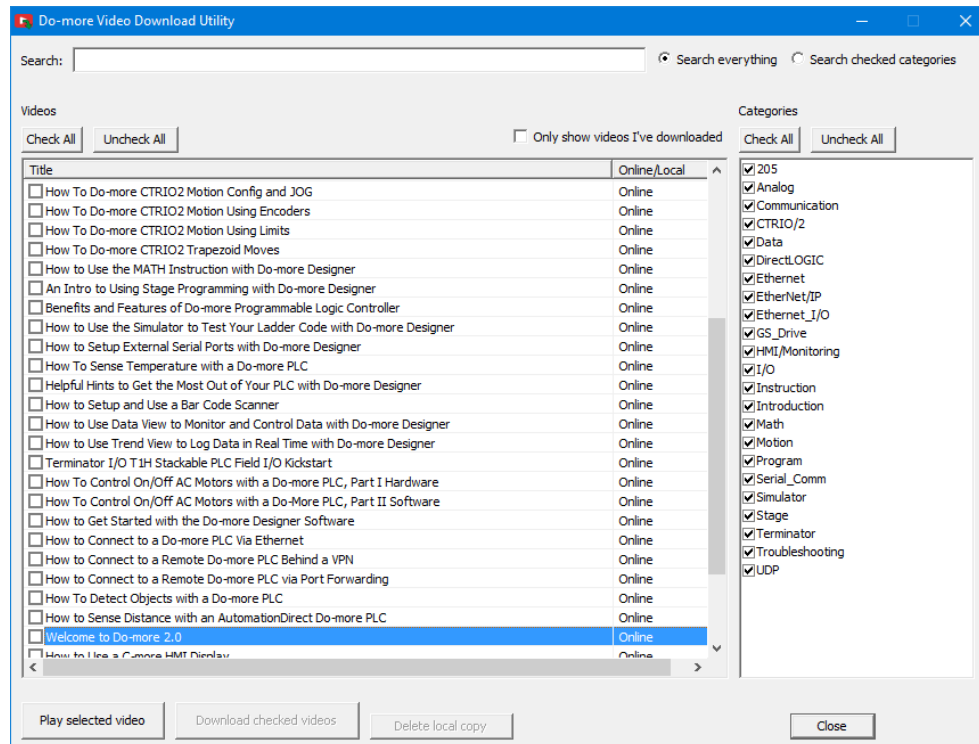
**Ladder View** – added **Ctrl+/ (control-slash)** hot key to **toggle documentation on/off quickly**. Great when online and needing more logic status real estate, Ctrl+/ turns off documentation temporarily to give you more contacts/coils/boxes on your screen. Hit Ctrl+/ to bring it back to “normal”, Ctrl+/ to turn it back off. Very handy when you just need to temporarily turn off documentation in your Ladder View.

## Do-more Updates Rel 2.0, February, 2017



### Browse Videos Dialog

The new Browse Videos dialog box lets you navigate all the videos, and it supports keyword filtering and title text search to watch any/all videos (see Help->Browse Videos).



### Video Download Utility

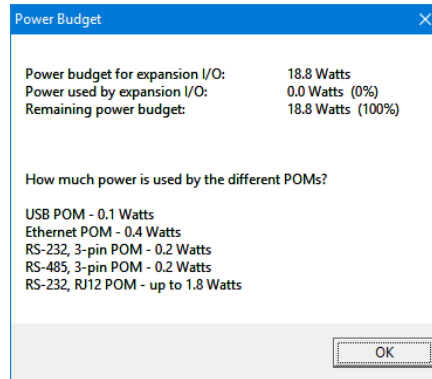
The new Video Download utility can be especially helpful for installations where Internet access is erratic or does not exist. By downloading relevant videos to your hard drive ahead of time, you can still play these videos regardless of your Internet connection at those critical moments! (see Help->Download Videos).

### 2.0.3 Modifications

1. Fixed major issue when writing a 1.4 (or earlier) disk project using Designer 2.0.2 or 2.0.1 down to a 205 or Terminator CPU. The PLC project may not be read back from the PLC correctly. Ladder memory will be interpreted as one large monolithic block of code (no \$Main). Workaround with 2.0.2 or 2.0.1: make a change to the Memory Configuration before writing to the PLC. **Fix: 2.0.3 fixes this issue.**

### 2.0.2 Modifications

1. Dashboard
  - a. Currently installed BRX POM included in Power Budget calculation when online; offline and online Power Budget dialog lists power usage for the various POMs since they are hot-swappable making the Power Budget dynamic:



- b. reload button properly refreshes at the current scrolled position
  - c. CPU panel shows Mode Switch position next to actual PLC mode
  - d. clicking on Ethernet port lets you Edit IP Configuration
  - e. adjusted behavior of Ethernet panel items on non-Ethernet PLCs
  - f. smarter display of SD Card and Mode Switch when offline
  - g. made aware of adding/removing data-blocks
  - h. added High Speed I/O tab (HSIO)
  - i. added confirmation message box when disabling Ethernet I/O Master or disabling EtherNet/IP Server
  - j. added Monitor Ethernet I/O to Ethernet I/O Master panel item's pop-up menu
2. System Configuration dialogs
    - a. BRX Discrete Input Filter – changed default filter time to 10ms; so then the BRX High Speed Input dialogs will notify user if a high speed input is configured to use that slow default filter time
    - b. BRX Discrete Input Filter – changed “response times” to “filter values”
    - c. BRX Analog Input Configuration – correctly displays analog current units 0.61 uA
    - d. BRX Analog Output Configuration properly displaying electrical units
    - e. BRX Analog Output Configuration shows max 16 bit signed raw value as 32767
    - f. BRX Analog Input and Output Configuration – replaced “Range Limit” phrase with “Clamp”
    - g. BRX Setup Interrupt Timer clamps on max value entry and also displays microsecond entry values in their seconds/millisecond equivalent
    - h. BRX Setup Interrupt Event Configuration dialog has a “Clear” button
    - i. BRX Table Driven Output dialog has correct TDODECFG mnemonic
    - j. Memory Configuration dialog no longer initially has Hide Built-in Blocks checkbox CHECKED
    - k. SMTP Configuration dialog and Ethernet I/O Monitor dialog misspellings fixed
    - l. Reduced multiple “nag” dialogs when making System Configuration changes when online
    - m. Help button now works on Setup BRX POM dialog, BRX Setup Discrete Input Filter dialog, BRX Setup Analog dialog, Edit User Password dialog
  3. GSREGRD/GSREGWR correctly labeled as Fully Asynchronous (5649)

## Do-more Updates Rel 2.0, February, 2017

4. RX/WX instruction From/To Local/Remote editors no longer initially clearing Local field (this may have been an issue in other element editor fields in 2.0.1)
5. AXHOME editor is 2 columns
6. Changed wording of AXCONFIG's "motion fault limit" parameters to "overtravel fault limit"
7. AXCAM editor reminds users to hit the "Apply to table" button when making changes to the table configuration parameters
8. Made Do-more serial protocol more robust
9. Ladder View properly displays long Unassigned Nicknames and Symbolic Constants in contacts and coils (5658)
10. Element Editor Auto Complete now shows Structure level nicknames which have valid structure fields for that parameter (5659)
11. Browse PLC File System – bumped application timeout to 10 seconds (5655)
12. Select Project dialog's PLC Subtype Specification list shows voltage range next to power-supply type
13. Do-more Technology version takes you to the new Download Firmware/Gate Array dialog instead of the System Information dialog when looking to update your PLC
14. Project Browser shows the *Sort By* settings for the *Control Logic* and the *Configuration/Memory* nodes of the browser tree (5281)
15. Fixed some modality issues with various dialog boxes
16. Browse Videos dialog can sort based on Location column (Disk vs. Internet)
17. Video Download Utility reports error messages in addition to the error codes

**Do-more Updates Rel 1.4 September, 2015, and earlier**

For details about updates for version 1.4 and earlier, see this online document:

[http://forum.hosteng.com/wndm/Updates\\_1\\_4.pdf](http://forum.hosteng.com/wndm/Updates_1_4.pdf)