



**Product Family:** EZTouch

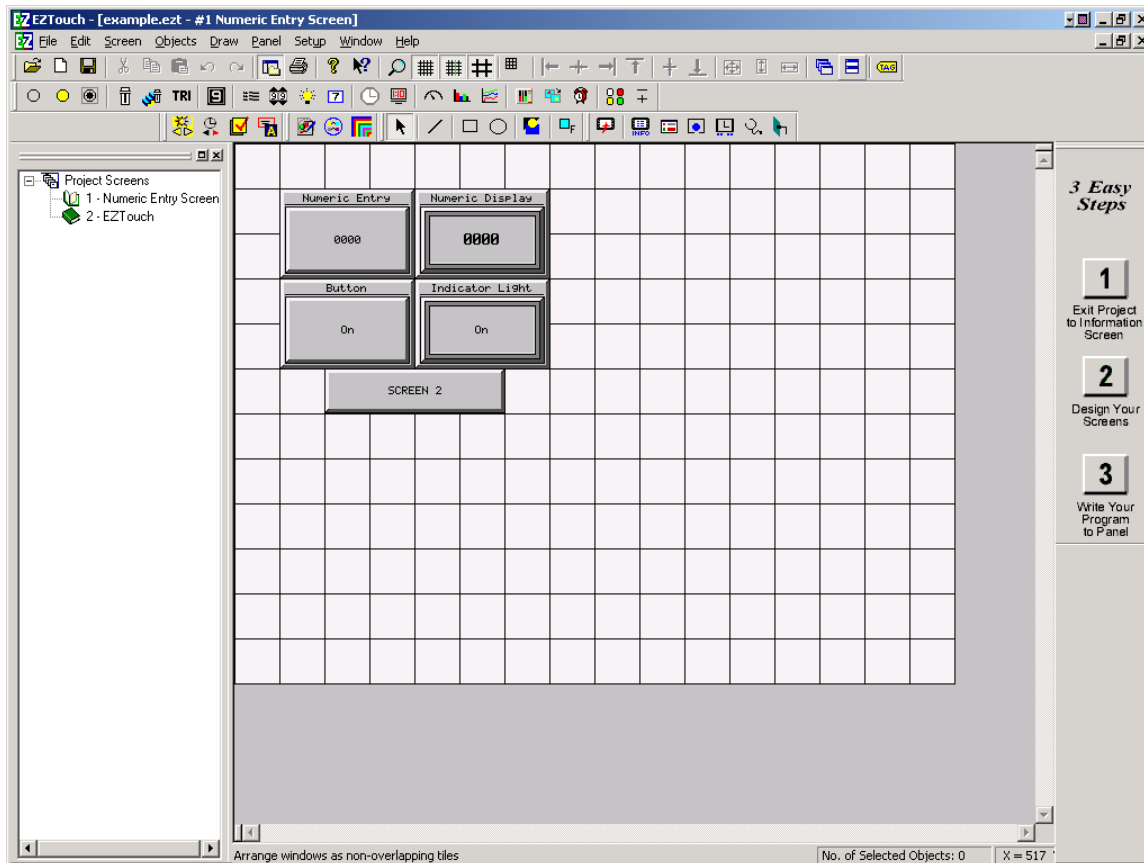
**Number:** AN-EZ-009

**Subject:**

**Date Issued:** 10/23/03

**Revision:** Original

Open your project in the EZTouch Edit software. Open the screen that you want to capture and press <Alt-Print Screen>. The screen capture will look something like the example below. If you wish to turn the Gridlines off, uncheck Screen → Show Touchcells.



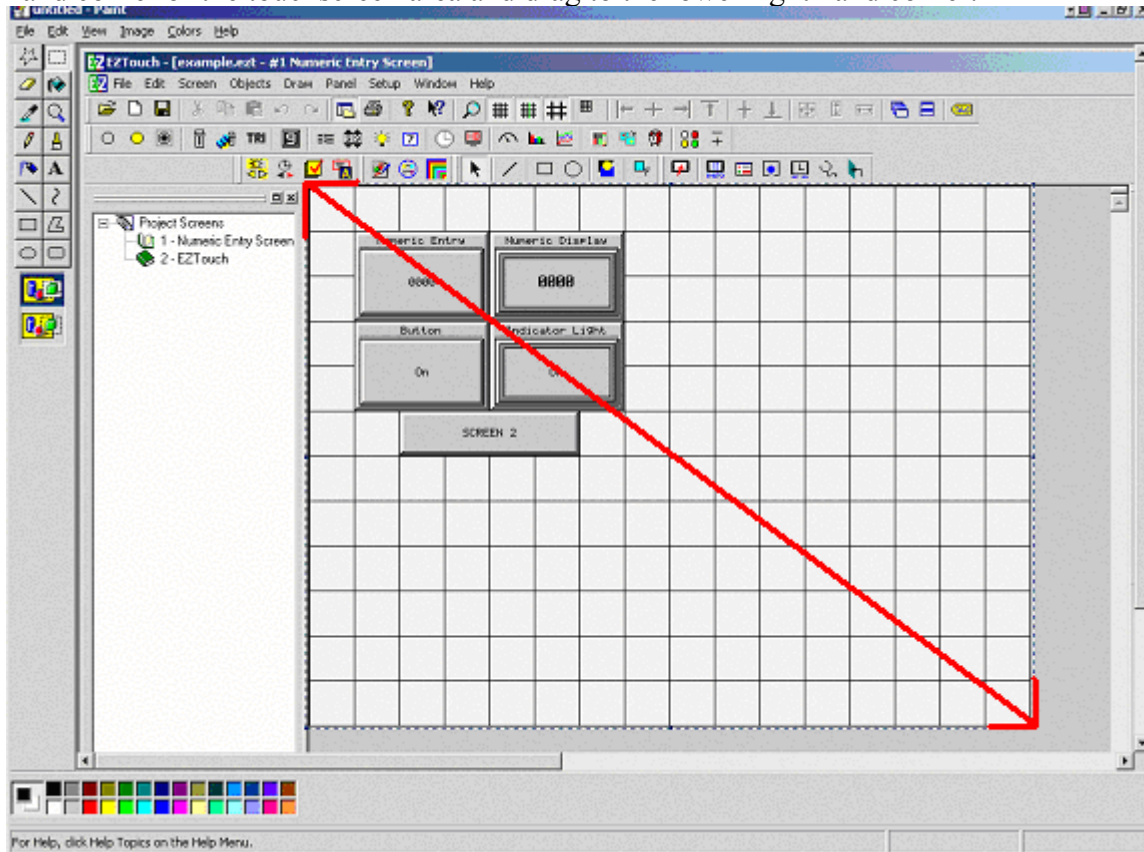
Now go to the Start menu → Programs → Accessories → Paint. Click on the white area and press <CTRL-V>. If you get a message saying that “The image in the clipboard is larger than the bitmap. Would you like to enlarge the bitmap?” select “Yes.”



**THIS INFORMATION PROVIDED BY AUTOMATIONDIRECT.COM TECHNICAL SUPPORT IS PROVIDED "AS IS" WITHOUT A GUARANTEE OF ANY KIND.**

These documents are provided by our technical support department to assist others. We do not guarantee that the data is suitable for your particular application, nor do we assume any responsibility for them in your application.

Select the Dashed Box icon from the toolbox on the upper left hand side. Click on the upper left hand corner of the touchscreen area and drag to the lower right hand corner.



Press <CTRL-C> to copy the selection to the clipboard. Now you may either create a new image in Paint and paste the image to it, or paste the image directly into another program such as Microsoft Word.

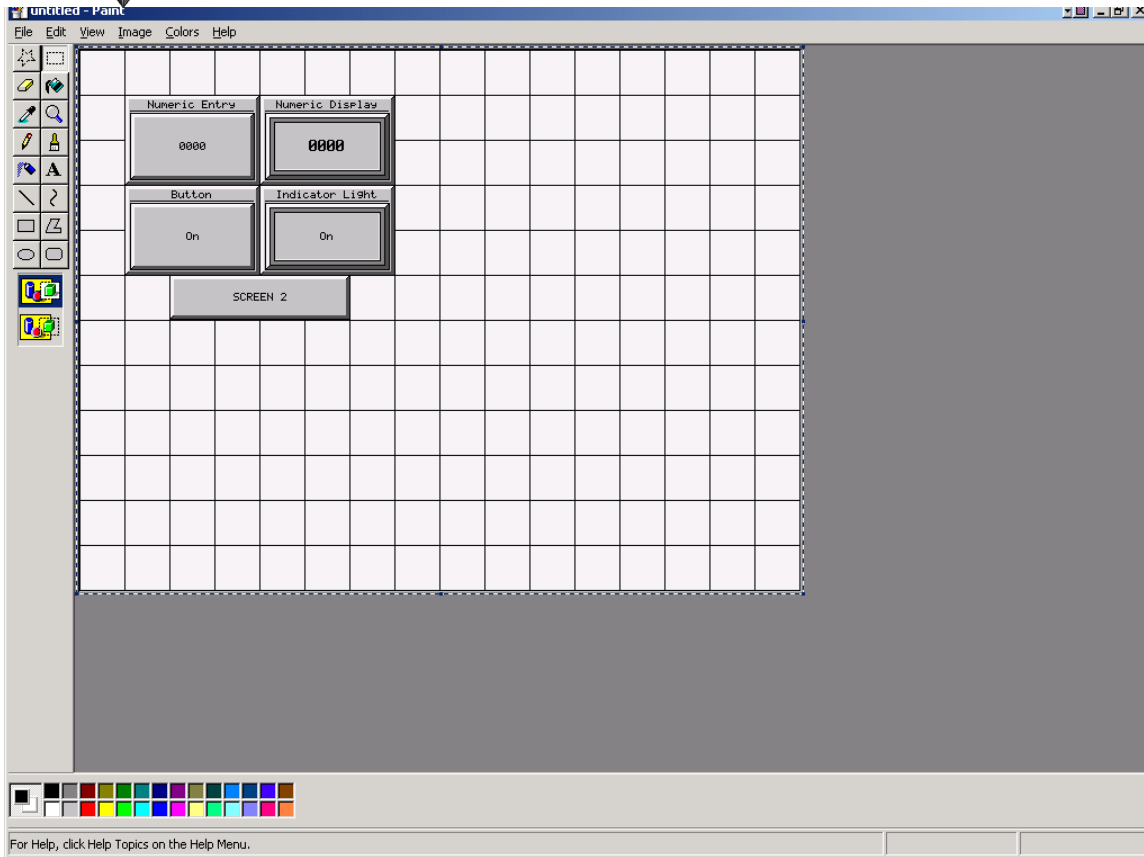
To use in Microsoft Word, open Word, select the proper position in the document and press <CTRL-V> to paste the image into the document.

To create an image file in Paint, select the File menu → New. Select “No” to “Save changes in untitled?” Click on the white area and press <CTRL-V>. The screen should look similar to the one below. Now you may select the File menu → Save and save the file as a Bitmap (BMP), GIF, or JPEG (JPG) file to email or include in other documents.



**THIS INFORMATION PROVIDED BY AUTOMATIONDIRECT.COM TECHNICAL SUPPORT IS PROVIDED "AS IS" WITHOUT A GUARANTEE OF ANY KIND.**

These documents are provided by our technical support department to assist others. We do not guarantee that the data is suitable for your particular application, nor do we assume any responsibility for them in your application.



## Technical

**Assistance:** If you have questions regarding this Application Note, please contact us at 770-844-4200 for further assistance.