



APPLICATION NOTE

THIS INFORMATION PROVIDED BY AUTOMATIONDIRECT.COM TECHNICAL SUPPORT IS PROVIDED "AS IS" WITHOUT A GUARANTEE OF ANY KIND.

These documents are provided by our technical support department to assist others. We do not guarantee that the data is suitable for your particular application, nor do we assume any responsibility for them in your application.

**Product Family: DirectTouch
(DP-C320/321)
(DP-M320/321)**

Number: AN-DP-005

Subject: DirectTouch panels, uploading and restoring the project into Screen Creator software.

Date Issued: 8/24/04

Revision: Original

Introduction:

This application note will explain how to connect to a Direct Touch panel, then upload and restore the project from the panel into the Screen Creator software on your PC.

Tools Needed:

1. Screen Creator Software V1.17
2. Direct Touch panel
3. DP-PGMCBL Direct Touch programming cable
4. DP-PGMSW-M Screen Creator user manual

Quick notes:

1. This application note pertains to Screen Creator V1.17 if you do not have V1.17 you can download the latest version for free from www.automationdirect.com.
2. *The Screen Creator software does **not** support USB to Serial converters of any kind.*
3. If the touch functionality, of the screen, is damaged it will not be possible to put the panel in the Upload/Download mode. In this case you will not be able to upload or download projects to/from the panel. *Retrieval of the program from this point is not possible.*
- 4.

Execution:

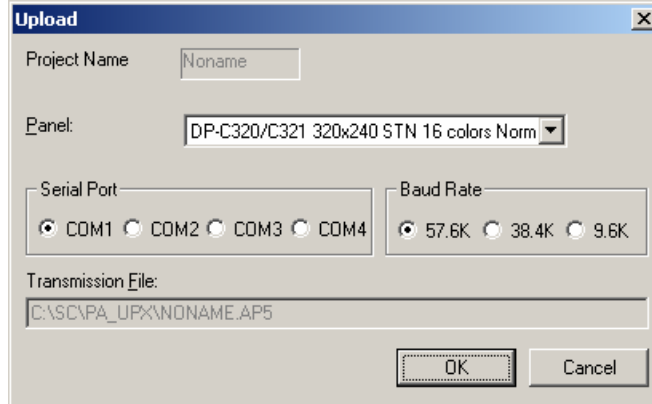
1. With the DirectTouch panel powered up, push the upper left and lower right corners of the screen simultaneously. This will bring up the "System Mode Main Menu" screen.
2. Select "Up/Download" this will bring up the ****Up/Download**** screen. "Up/Download Executing" will be displayed in the middle of the screen as a default message.



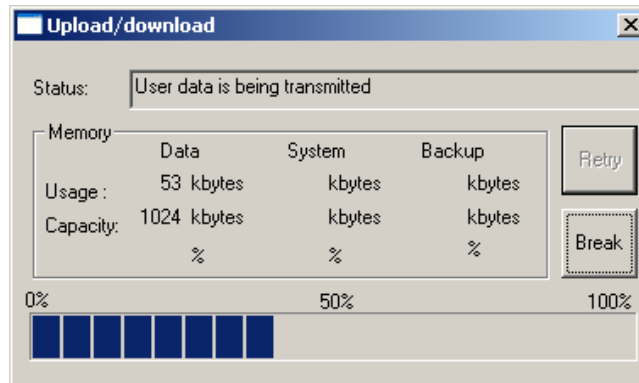
THIS INFORMATION PROVIDED BY AUTOMATIONDIRECT.COM TECHNICAL SUPPORT IS PROVIDED "AS IS" WITHOUT A GUARANTEE OF ANY KIND.

These documents are provided by our technical support department to assist others. We do not guarantee that the data is suitable for your particular application, nor do we assume any responsibility for them in your application.

3. With Screen Creator open select Project>Upload. The "Upload" screen is now displayed, select the comport on your PC that you intend to use, and the panel model you are connected to. Leave the Baud Rate at the default 57.6K. Now select OK.



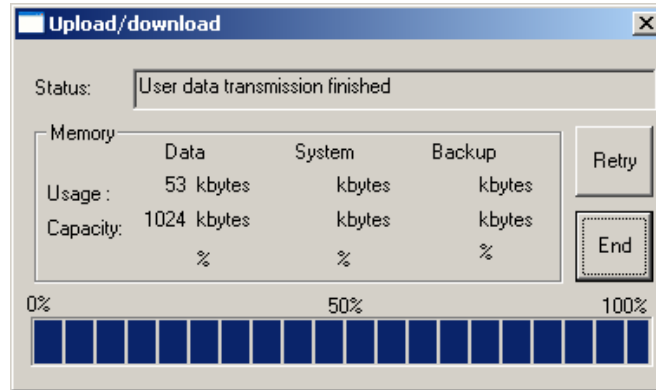
4. Now the Upload/ Download screen will appear.



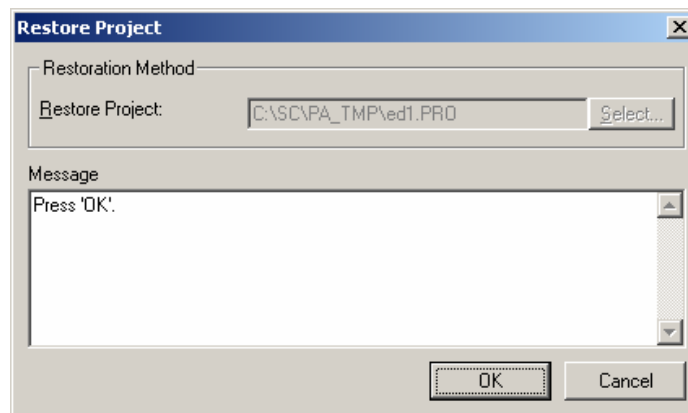


THIS INFORMATION PROVIDED BY AUTOMATIONDIRECT.COM TECHNICAL SUPPORT IS PROVIDED "AS IS" WITHOUT A GUARANTEE OF ANY KIND.

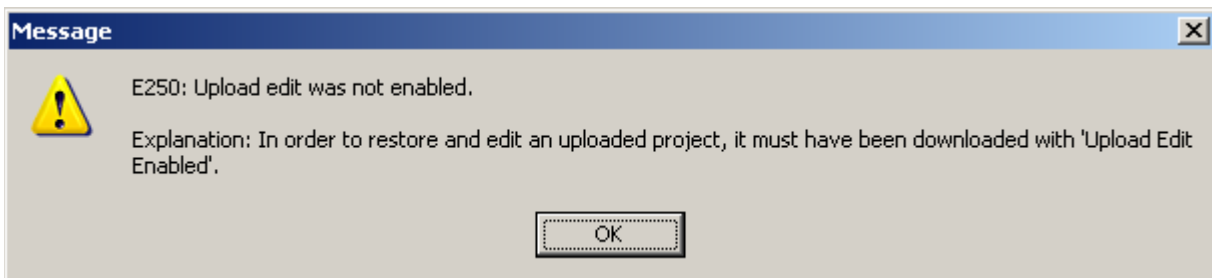
These documents are provided by our technical support department to assist others. We do not guarantee that the data is suitable for your particular application, nor do we assume any responsibility for them in your application.



5. Once the transmission is finished select "End"
6. Now go back and select Project> Upload>Restore Uploaded Project.
7. The following Dialog box will appear.



8. Once you select OK the project will be restored into the Project folder of the Screen Creator Software then all you have to do is go to Project> Open and open the project.
9. While in the process of restoring the project, if you encounter the error message below you will not be able to restore the project that is in the panel.

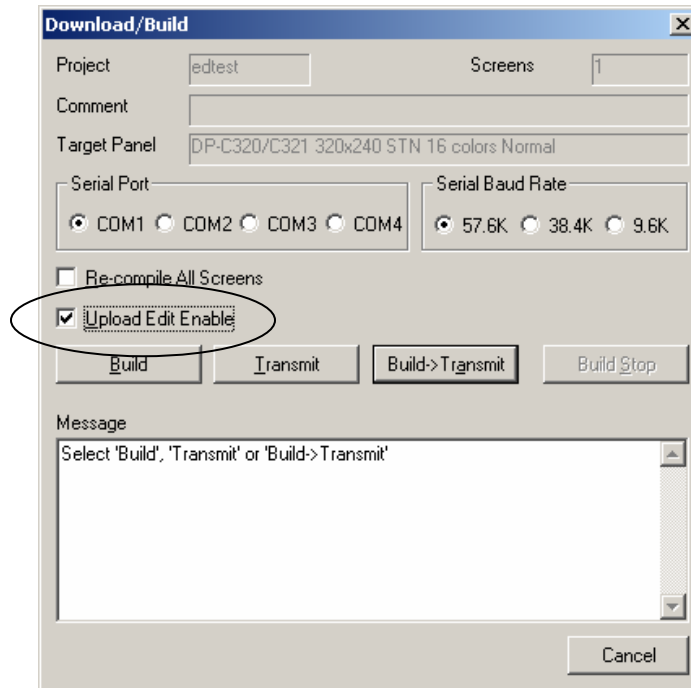




THIS INFORMATION PROVIDED BY AUTOMATIONDIRECT.COM TECHNICAL SUPPORT IS PROVIDED "AS IS" WITHOUT A GUARANTEE OF ANY KIND.

These documents are provided by our technical support department to assist others. We do not guarantee that the data is suitable for your particular application, nor do we assume any responsibility for them in your application.

10. This is what the Download screen looks like and where you would have selected Upload Edit Enable when the panel was originally programmed.



11. If **UPLOAD EDIT ENABLE** was not selected or if you got the error **E250** from above there is absolutely no way to get the project out of the panel. ***There is absolutely no backdoor.*** If “Upload Edit Enable” was not selected source code necessary to graphically recreate the project was not saved to the panel. So there is nothing to Upload.

Technical

Assistance: If you have questions regarding this Application Note, please contact us at 770-844-4200 for further assistance.