



MANUAL ADVISORY

Product: LookoutDirect Version 4.5
Getting Started Guide

Number: MA-LKD-001

Part No: Included in PC-LKD-DEV
& PC-LKD-DEVUPG

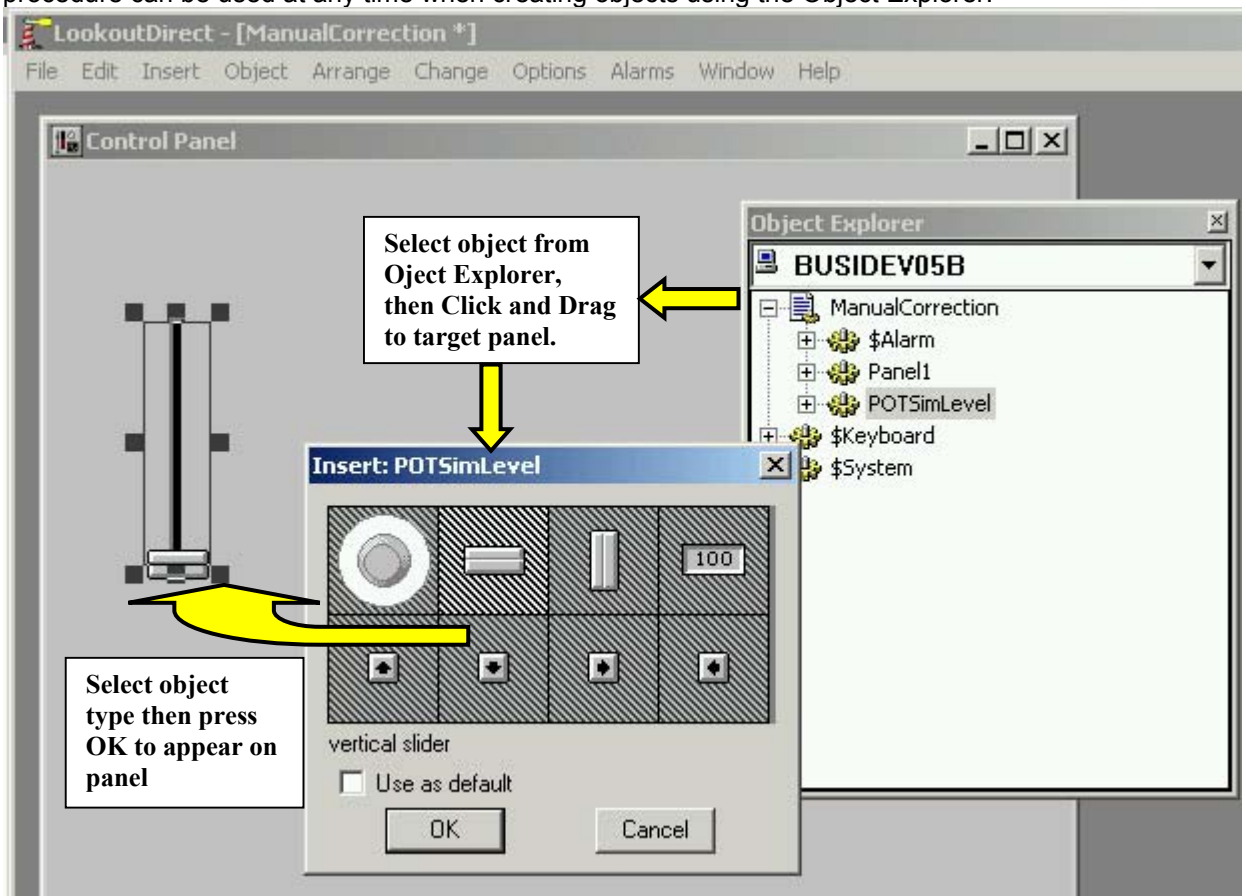
Date Issued: 3/4/02

Subject: LookoutDirect Version 4.5 Object Explorer procedure corrections
Products Affected: Getting Started Guide included in PC-LKD-DEV & PC-LKD-DEVUPG
Description of Problem: The tutorial in Chapter 3 of the Getting Started Guide manual does not include the procedure for dragging objects from the Object Explorer to Control panels to make them visible.

Revision: Original

Solution: The following describes the missing procedures in Chapter 3 of the Getting Started Guide manual which does not include the necessary steps for dragging objects from the Object Explorer to Control panels to make them visible:

On pages 3-5 Step 7, 3-10 Step 6, and 3-12 step 4, the following procedure must be added. This procedure can be used at any time when creating objects using the Object Explorer.



Technical Assistance: If you have questions regarding this Product Advisory, please contact us at 770-844-4200 for further assistance.