



APPLICATION NOTE

THIS INFORMATION PROVIDED BY AUTOMATIONDIRECT.COM TECHNICAL SUPPORT IS PROVIDED "AS IS" WITHOUT A GUARANTEE OF ANY KIND.

These documents are provided by our technical support department to assist others. We do not guarantee that the data is suitable for your particular application, nor do we assume any responsibility for them in your application.

Product Family: Point of View

Number: AN-POV-017

Subject: Advanced user quick start for setting up remote thin clients to Point of View

Date Issued: 3-2-2017

Revision: 2

Please note that this procedure is for advanced users that are familiar with configuring IIS and have already created a local project. Also due to the varying versions of IIS out there WE CANNOT SUPPORT IIS OF ANY VERSION. If you need further assistance with the setup of IIS please contact Microsoft or a professional Web Administrator.

Assumptions:

You are logged onto the machine used as the server as a local Administrator.

Point of View (also known as the dataserver) is installed on the same machine as the Web Server. (Web server mentioned in this application note is Internet Information Services (IIS)). You know how to enable and configure IIS (editing bindings, setting website path and adding MIME types.)

You have already setup a project and can run it locally from the server.

This will be run on a local network within a firewall and not accessible through the internet. (accessing the server over the internet is possible but due to too many variables we cannot assist in this. Contact a professional Web Administrator and/or your ISP for further help with this matter).

If you are unsure that you are already at this level then AutomationDirect has several great videos to get you going. You can find that playlist here:

https://www.youtube.com/playlist?list=PLPdypWXY_ROrocspPa_5s0SQgsaEfKYG3

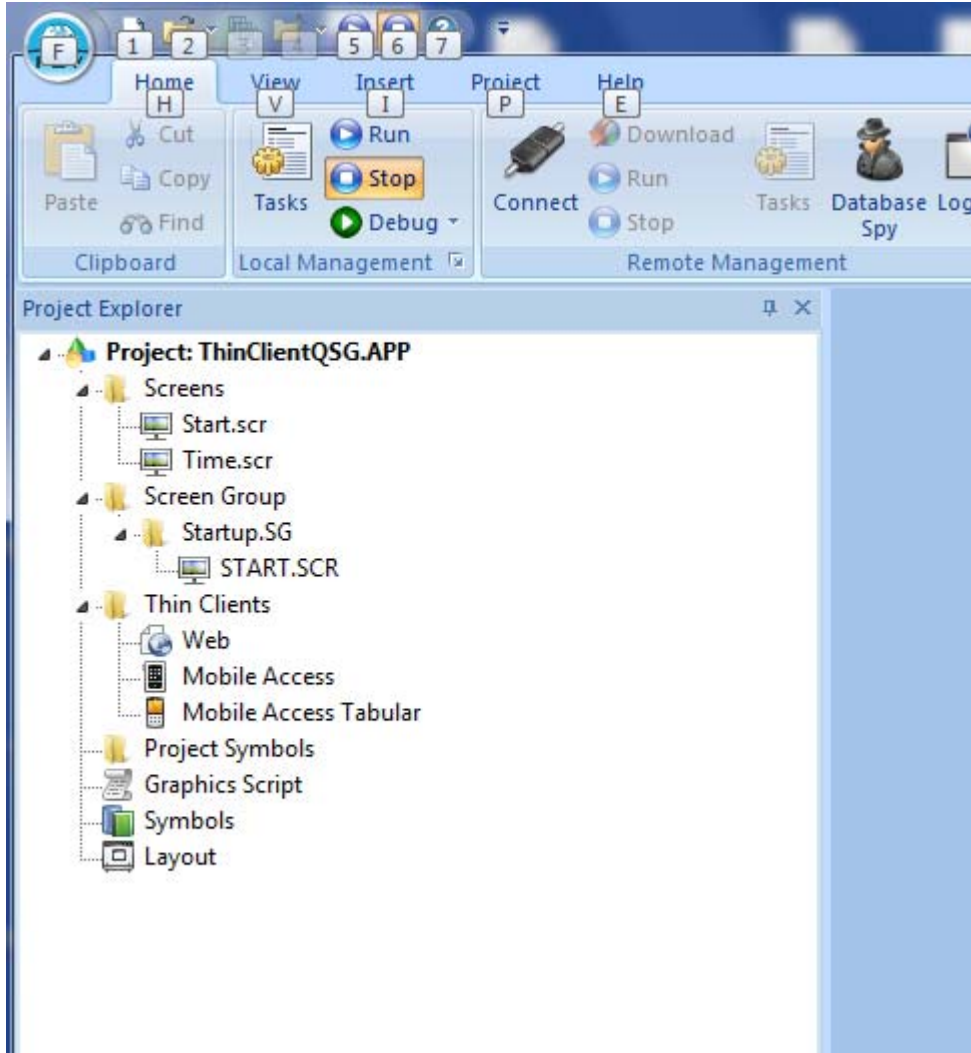
This guide goes directly to setting up remote clients for access from a different machine than the server and will not cover loopback or the use of NTWebserver.



THIS INFORMATION PROVIDED BY AUTOMATIONDIRECT.COM TECHNICAL SUPPORT IS PROVIDED "AS IS" WITHOUT A GUARANTEE OF ANY KIND.

These documents are provided by our technical support department to assist others. We do not guarantee that the data is suitable for your particular application, nor do we assume any responsibility for them in your application.

For this document the startup screen is named Start.scr. There is also a screen group named Startup.sg, it is set as the startup group and Start.scr is added to this screen group.



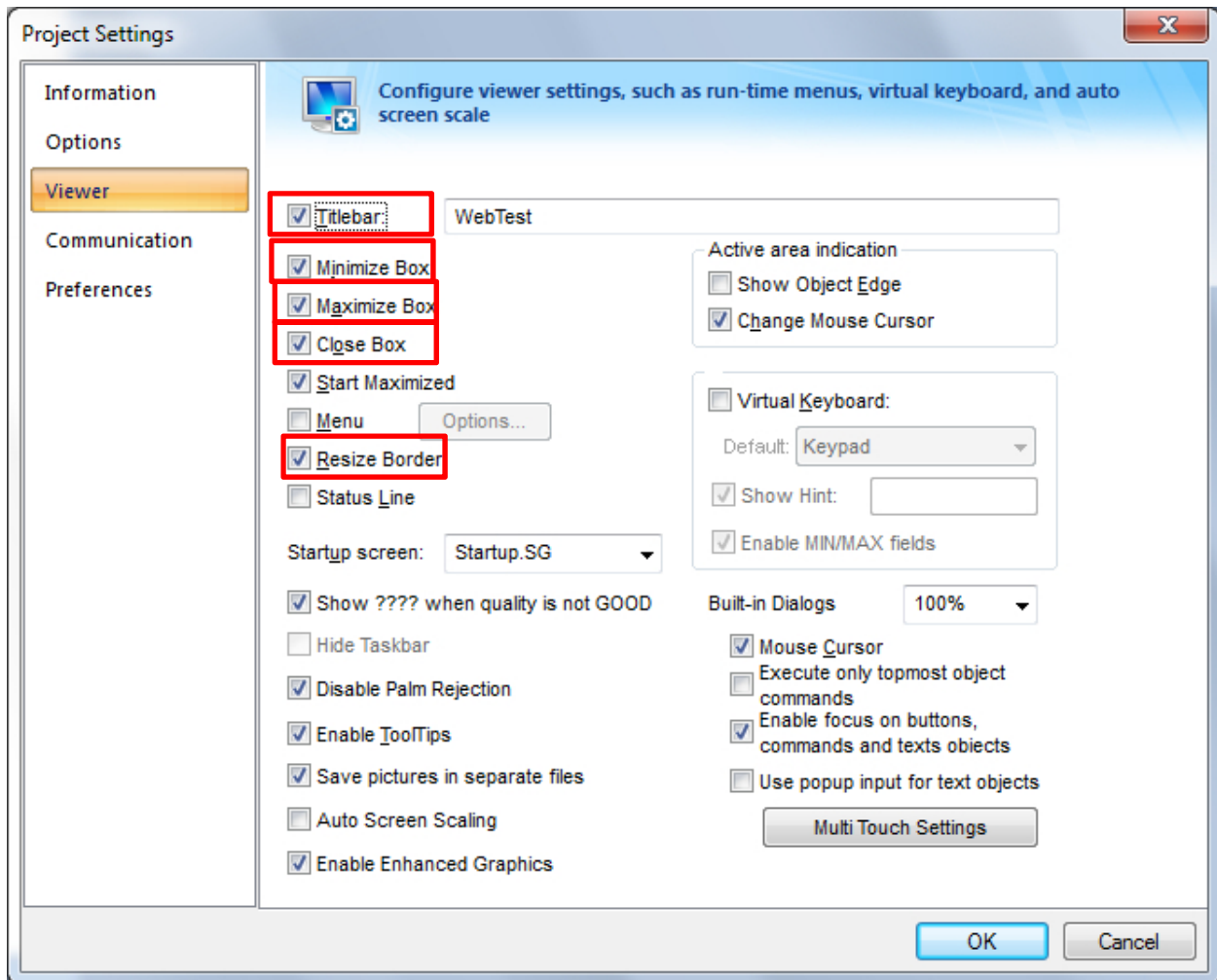


THIS INFORMATION PROVIDED BY AUTOMATIONDIRECT.COM TECHNICAL SUPPORT IS PROVIDED "AS IS" WITHOUT A GUARANTEE OF ANY KIND.

These documents are provided by our technical support department to assist others. We do not guarantee that the data is suitable for your particular application, nor do we assume any responsibility for them in your application.

Step 1 Create a project for local use.

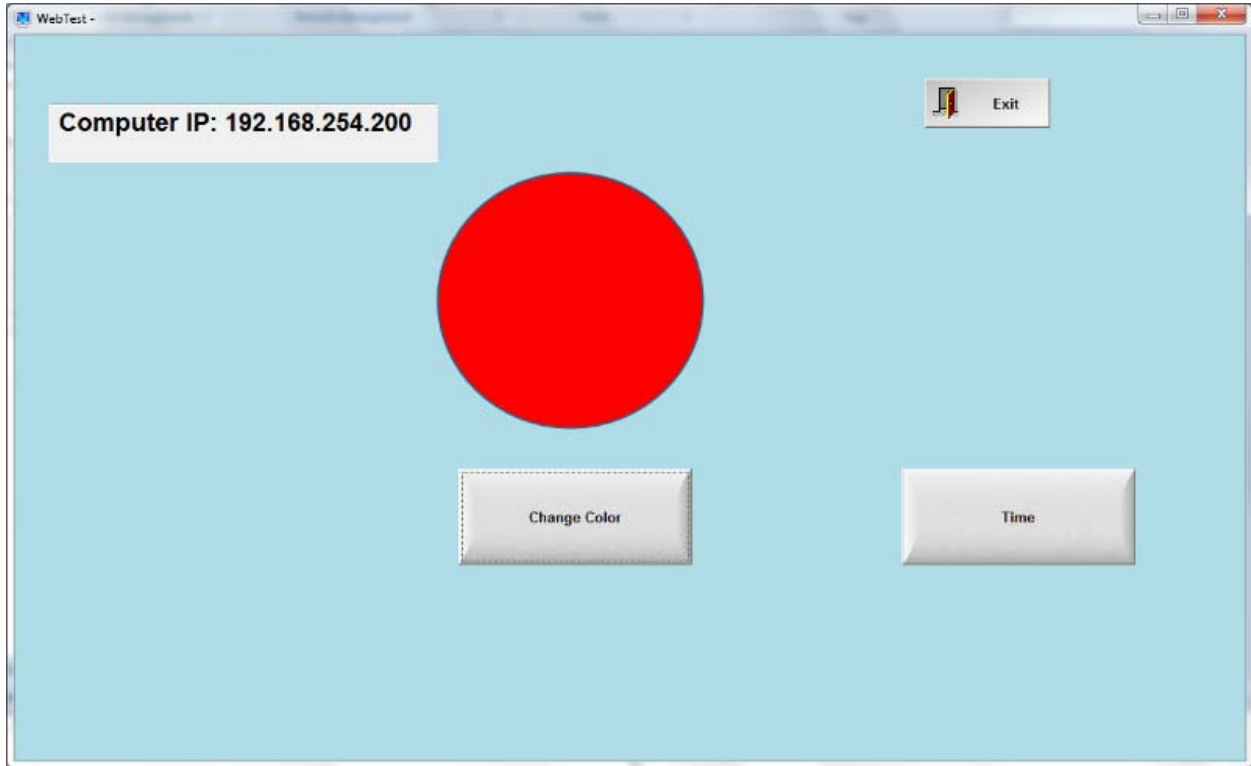
After creating this project test it locally to make sure that it works. It is also advisable to enable the Titlebar in the Project Viewer settings and also enable minimize, maximize, close and resize for testing purposes.





THIS INFORMATION PROVIDED BY AUTOMATIONDIRECT.COM TECHNICAL SUPPORT IS PROVIDED "AS IS" WITHOUT A GUARANTEE OF ANY KIND.

These documents are provided by our technical support department to assist others. We do not guarantee that the data is suitable for your particular application, nor do we assume any responsibility for them in your application.



POV running as shown running from the local runtime server

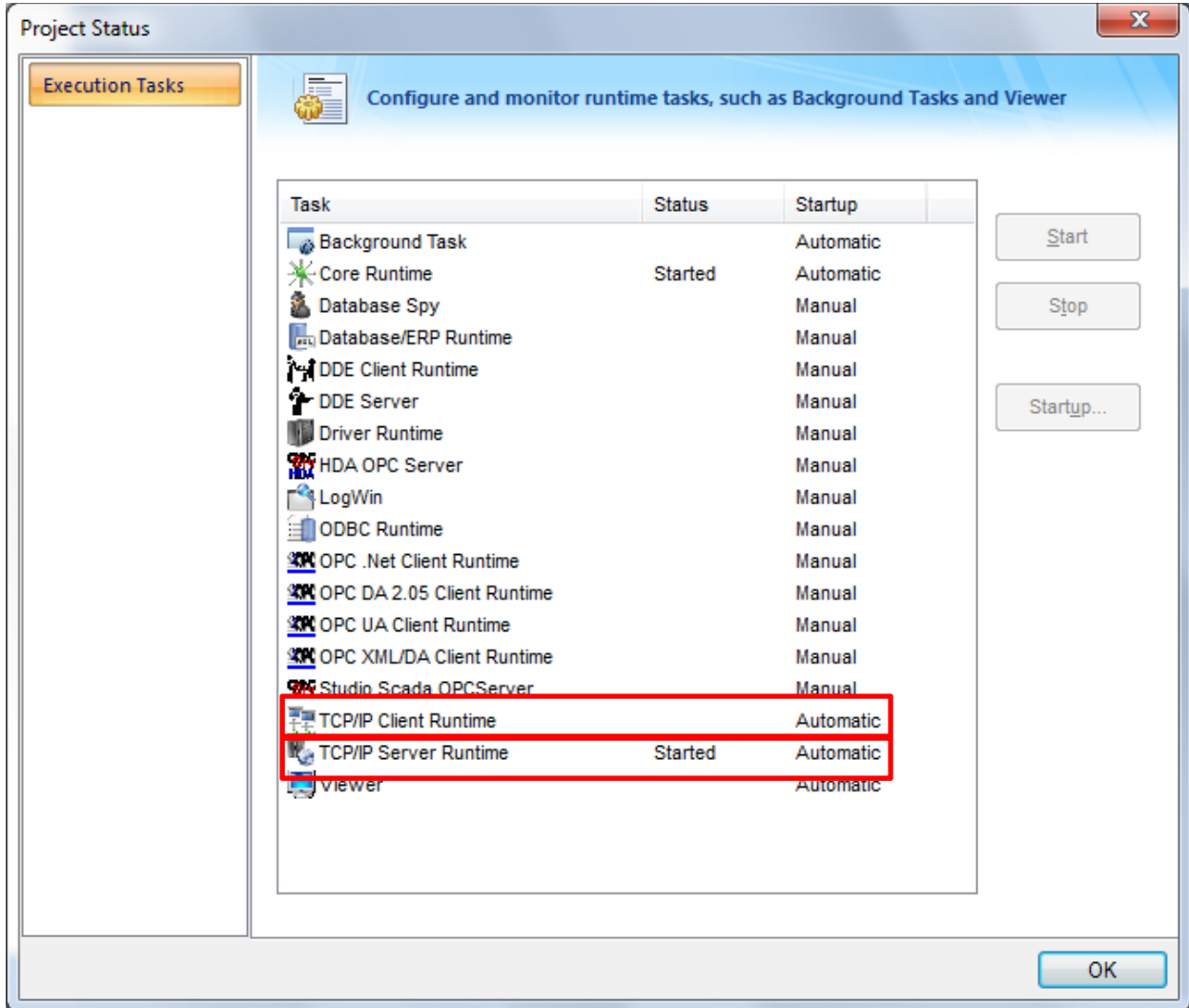


THIS INFORMATION PROVIDED BY AUTOMATIONDIRECT.COM TECHNICAL SUPPORT IS PROVIDED "AS IS" WITHOUT A GUARANTEE OF ANY KIND.

These documents are provided by our technical support department to assist others. We do not guarantee that the data is suitable for your particular application, nor do we assume any responsibility for them in your application.

Step 2 Changes to local project in POV

In the POV project go to the home tab-> Tasks and set the TCP/IP server runtime and TCP/IP client to Automatic startup





THIS INFORMATION PROVIDED BY AUTOMATIONDIRECT.COM TECHNICAL SUPPORT IS PROVIDED "AS IS" WITHOUT A GUARANTEE OF ANY KIND.

These documents are provided by our technical support department to assist others. We do not guarantee that the data is suitable for your particular application, nor do we assume any responsibility for them in your application.

Click on the Project tab of the ribbon bar then select Web

From here, in the Data Server IP Address field, enter the IP address of the network adapter on the server that the clients will be communicating with. Check Enable File Compression.

The screenshot shows the 'Project Settings' dialog box with the 'Web' tab selected. The main area is titled 'Define server and client settings, such as firewall and virtual keyboard'. The 'Data Server IP Address' field contains '192.168.254.200' and the 'Send Period (ms)' field contains '100'. There are two buttons on the right: 'Advanced...' and 'IP Security...'. Below these are several checkboxes: 'Disable Remote Client Commands' (unchecked), 'Auto Screen Scaling' (checked), 'Enable ToolTips' (checked), and 'Enable File Compression' (checked). There is also a 'Log' section with an 'Enable' checkbox (unchecked) and a 'FileName' field. A 'Built-in Dialogs Scale' dropdown is set to '100%'. On the right, there is a 'Virtual Keyboard' section with a 'Default' dropdown set to 'Keypad', and checkboxes for 'Show Hint' (checked) and 'Enable Min/Max fields' (checked). At the bottom are 'OK' and 'Cancel' buttons.

Click on Advanced. *If your clients will not have internet access, you will need to change the path of the ISSymbol URL. For consistency enter <http://<IPAddress used in the data server field>>*



THIS INFORMATION PROVIDED BY AUTOMATIONDIRECT.COM TECHNICAL SUPPORT IS PROVIDED "AS IS" WITHOUT A GUARANTEE OF ANY KIND.

These documents are provided by our technical support department to assist others. We do not guarantee that the data is suitable for your particular application, nor do we assume any responsibility for them in your application.

A screenshot of an 'Advanced' settings dialog box. It contains several input fields and a section for 'Web Tunneling Gateway'. The 'ISSymbol URL' field is populated with 'http://192.168.254.200'. The 'Web Tunneling Gateway' section has 'Enabled' checked, 'TCP Port' selected with a value of 80, and 'IP Address' and 'Secondary IP Address' fields. The 'Timeout for switching stations' field is set to 0. 'OK' and 'Cancel' buttons are at the bottom.

Advanced

Secondary Data Server IP Address:

Backup URL:

ISSymbol URL:
http://192.168.254.200

Web Tunneling Gateway

Enabled

IP Address:

TCP Port: 80

Secondary IP Address:

SSL Port: 443

Timeout for switching stations: 0

OK Cancel

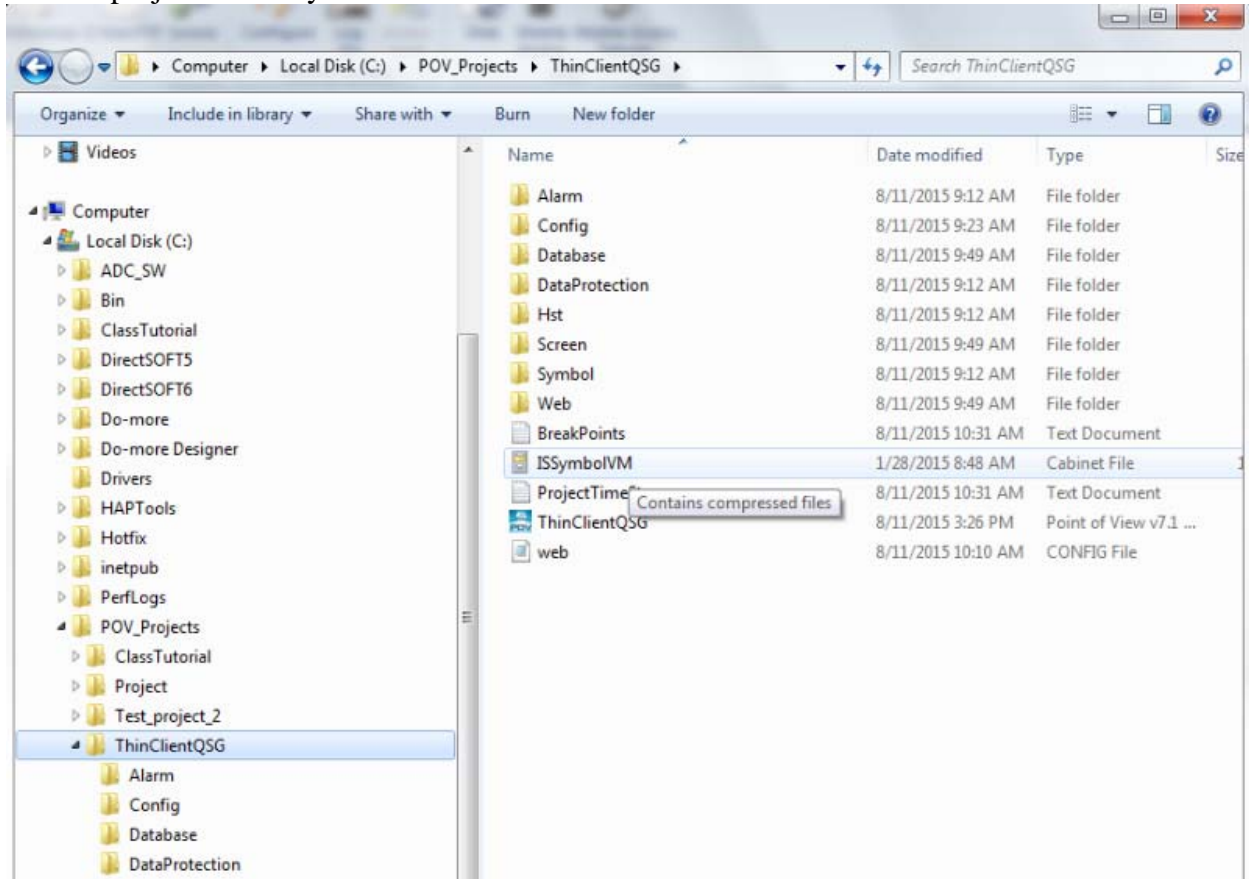
Now click OK to get out of advanced and OK to get out of Web project settings.



THIS INFORMATION PROVIDED BY AUTOMATIONDIRECT.COM TECHNICAL SUPPORT IS PROVIDED "AS IS" WITHOUT A GUARANTEE OF ANY KIND.

These documents are provided by our technical support department to assist others. We do not guarantee that the data is suitable for your particular application, nor do we assume any responsibility for them in your application.

Now do a search on the server for the file named ISSymbolVM once you find this file copy it into the project directory.





THIS INFORMATION PROVIDED BY AUTOMATIONDIRECT.COM TECHNICAL SUPPORT IS PROVIDED "AS IS" WITHOUT A GUARANTEE OF ANY KIND.

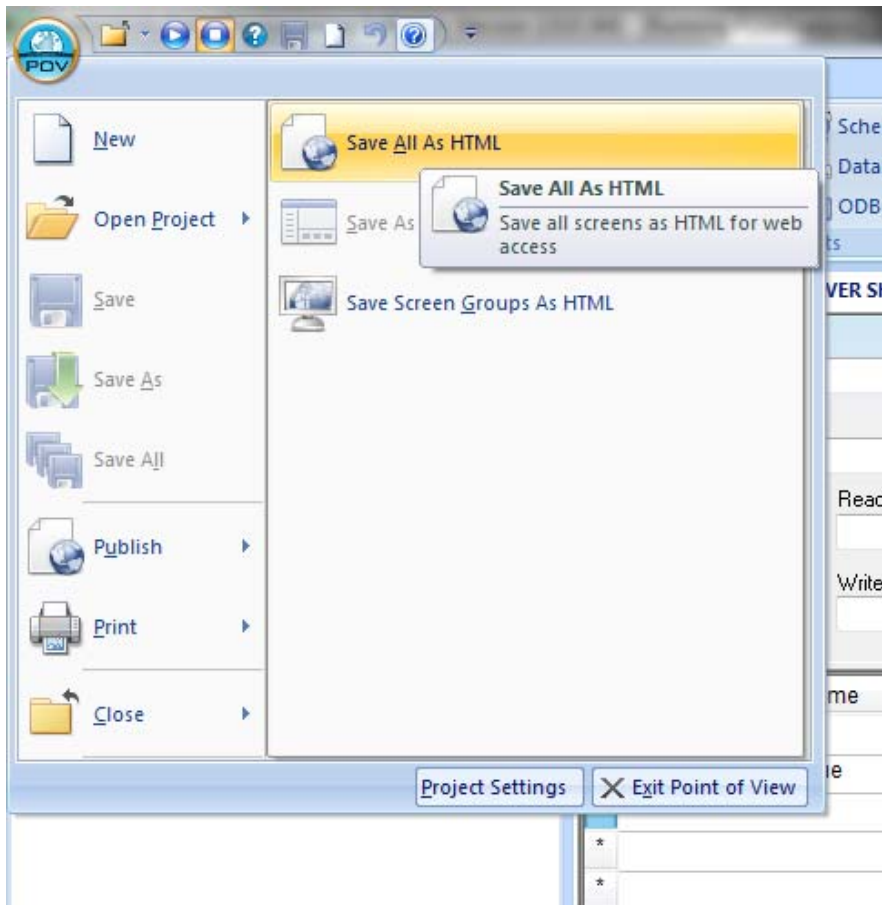
These documents are provided by our technical support department to assist others. We do not guarantee that the data is suitable for your particular application, nor do we assume any responsibility for them in your application.

Step 3 Publishing project to HTML

After you are done making the necessary changes to the POV project and moving the ISSymbolVM file to the appropriate location you will need to publish all of your screens to HTML.

(Default path: "C:\Program Files (x86)\AutomationDirect\Point of View v7.1\Bin\ISSymbolVM")

To publish the screens click on the POV icon on the top left of the screen Select Publish -> save All As HTML



Note that from now on any time changes are made to the POV project you will need to publish to html again.

Step 4 Setting up IIS

Please note that due to the many different versions of IIS and Windows we can only provide limited support. This step will show you what needs to be done to your PC and what IIS settings need to take place but will not show you how to do them. **Please note that the following screen captures provided are only to be a guideline as your operating system and/or version of IIS may look quite differently. If you need further assistance with the setup of IIS please contact Microsoft or Web Administrator.**



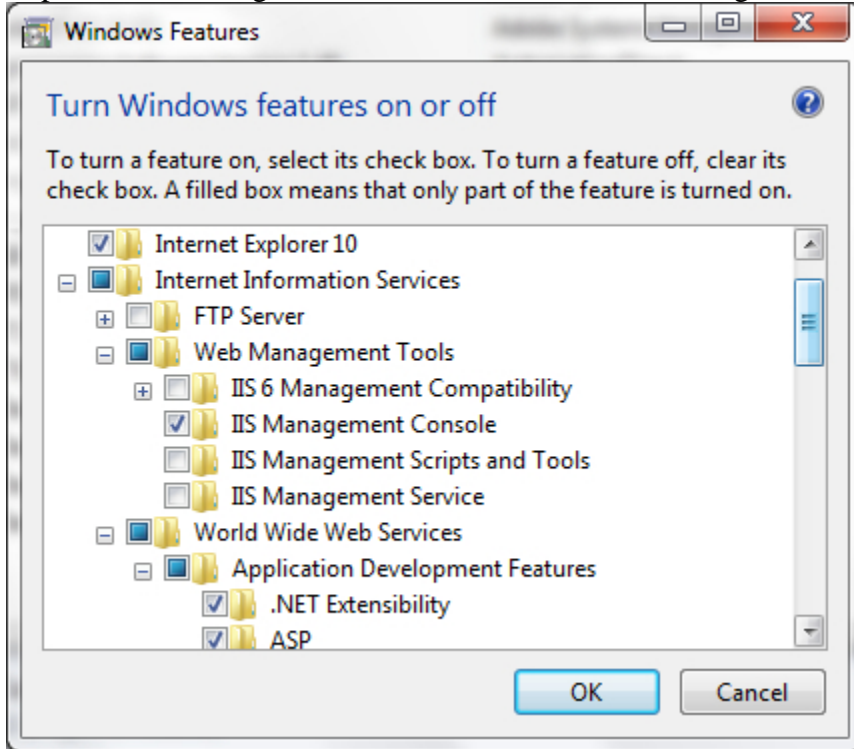
THIS INFORMATION PROVIDED BY AUTOMATIONDIRECT.COM TECHNICAL SUPPORT IS PROVIDED "AS IS" WITHOUT A GUARANTEE OF ANY KIND.

These documents are provided by our technical support department to assist others. We do not guarantee that the data is suitable for your particular application, nor do we assume any responsibility for them in your application.

Go to control panel then select programs and features. From here select Turn Windows features on or off. This opens up a new window.

Expand Internet Information Services.

Expand Web Management tools and make sure IIS management console is checked

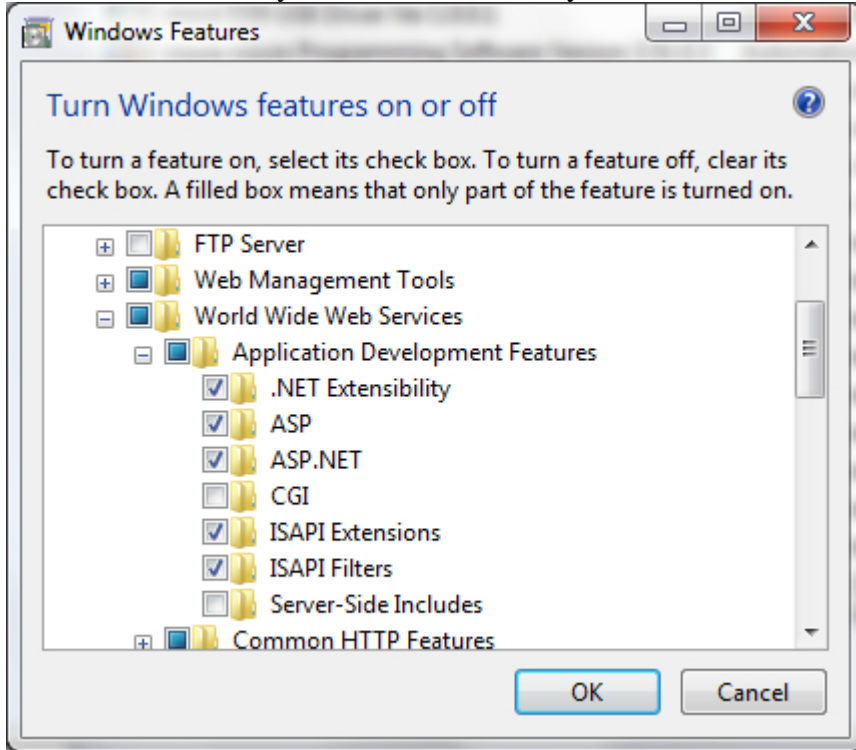




THIS INFORMATION PROVIDED BY AUTOMATIONDIRECT.COM TECHNICAL SUPPORT IS PROVIDED "AS IS" WITHOUT A GUARANTEE OF ANY KIND.

These documents are provided by our technical support department to assist others. We do not guarantee that the data is suitable for your particular application, nor do we assume any responsibility for them in your application.

Expand World Wide Web Services and then application development Features. Check everything under this section except CGI and Server side includes. (HINT: For Windows 8 make sure .Net Extensibility 3.5, .Net Extensibility 4.5, ASP.Net 3.5 and ASP.Net 4.5 are checked)

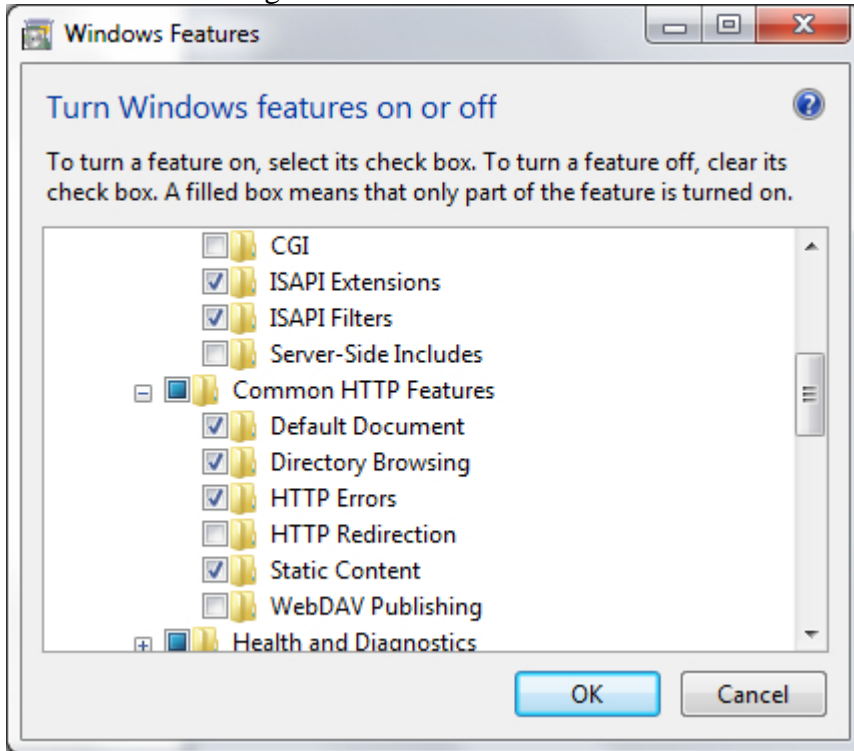




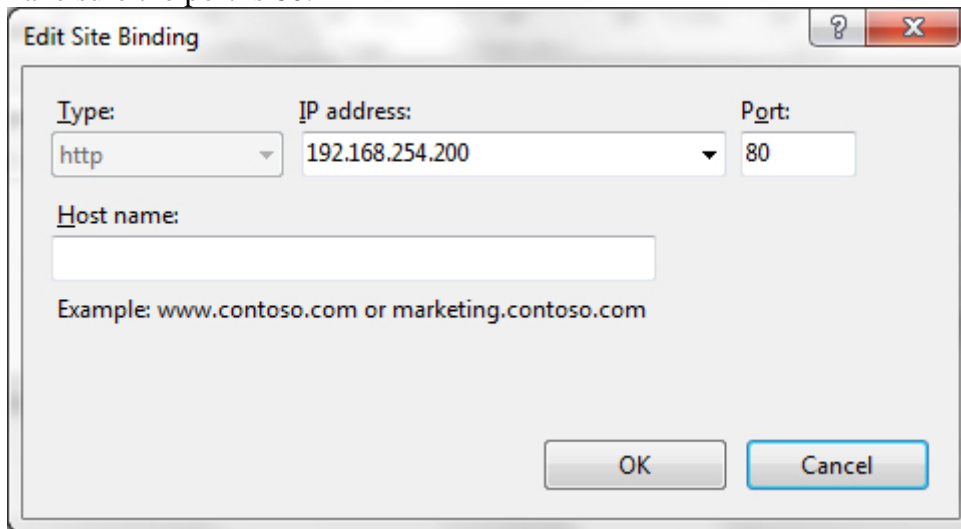
THIS INFORMATION PROVIDED BY AUTOMATIONDIRECT.COM TECHNICAL SUPPORT IS PROVIDED "AS IS" WITHOUT A GUARANTEE OF ANY KIND.

These documents are provided by our technical support department to assist others. We do not guarantee that the data is suitable for your particular application, nor do we assume any responsibility for them in your application.

Next expand common HTTP Features. Check everything except HTTP Redirection and WebDAV Publishing



Click OK then go back to your control panel main to get into the IIS management console. From Control panel you should be able to get to the IIS management console by selecting Administrative tools then Selecting Internet Information Services (IIS) Manager. From here note that the instructions are vague due to the many versions of IIS available. On the default website edit bindings. Enter the IP address you entered for the Data server previously and make sure the port is 80.





THIS INFORMATION PROVIDED BY AUTOMATIONDIRECT.COM TECHNICAL SUPPORT IS PROVIDED "AS IS" WITHOUT A GUARANTEE OF ANY KIND.

These documents are provided by our technical support department to assist others. We do not guarantee that the data is suitable for your particular application, nor do we assume any responsibility for them in your application.

Next find manage Web Site and select Basic settings. Change the physical path to the project's main folder.

Advanced Settings

(General)	
Application Pool	ASP.NET v4.0 POV
Bindings	http:192.168.254.200:80:
ID	2
Name	POV
Physical Path	C:\POV_Projects\ThinClientQSG
Physical Path Credentials	
Physical Path Credentials Logon Type	ClearText
Start Automatically	False
Behavior	
Connection Limits	
Enabled Protocols	http

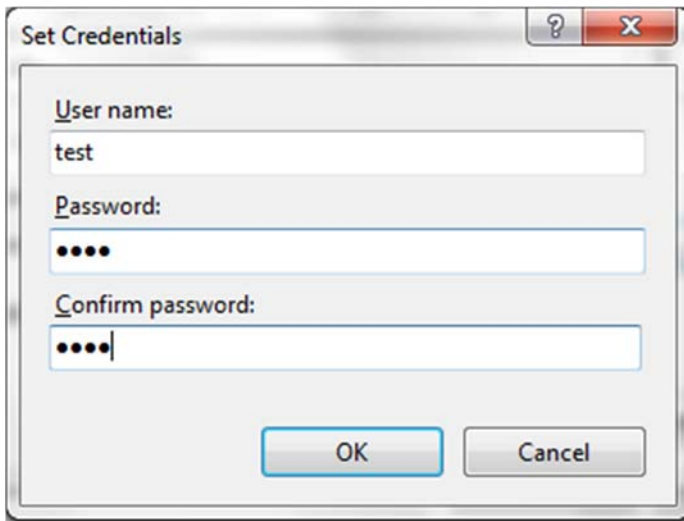
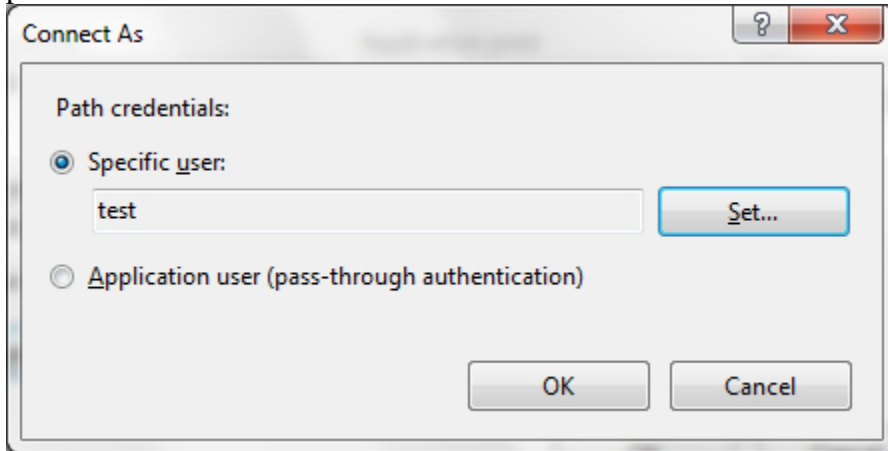
Physical Path
[physicalPath] Physical path to the content for the virtual directory.



THIS INFORMATION PROVIDED BY AUTOMATIONDIRECT.COM TECHNICAL SUPPORT IS PROVIDED "AS IS" WITHOUT A GUARANTEE OF ANY KIND.

These documents are provided by our technical support department to assist others. We do not guarantee that the data is suitable for your particular application, nor do we assume any responsibility for them in your application.

Next Click on connect as and then specific user and enter your Windows user name and password.



Click on test settings to verify the connection

Click OK.

Now go into Directory Browsing. Enable Directory Browsing.



THIS INFORMATION PROVIDED BY AUTOMATIONDIRECT.COM TECHNICAL SUPPORT IS PROVIDED "AS IS" WITHOUT A GUARANTEE OF ANY KIND.

These documents are provided by our technical support department to assist others. We do not guarantee that the data is suitable for your particular application, nor do we assume any responsibility for them in your application.

Go up to the highest level in your IIS connections (this should be the name of the PC, not the website). From here go into MIME types. Note the following extensions in the list below. Many of them will exist already. If they exist then do not change them. If they do not exist you will need to add each one of them and use the MIME type of "application/POV".

List of required MIME types

.app
.bin
.csv
.gis
.html
.ico
.ini
.lst (lower case L)
.rtgis
.scc
.scr
.sg
.stmp
.tra
.txt

After all of the MIME types have been added restart IIS. You can now close the IIS management console.

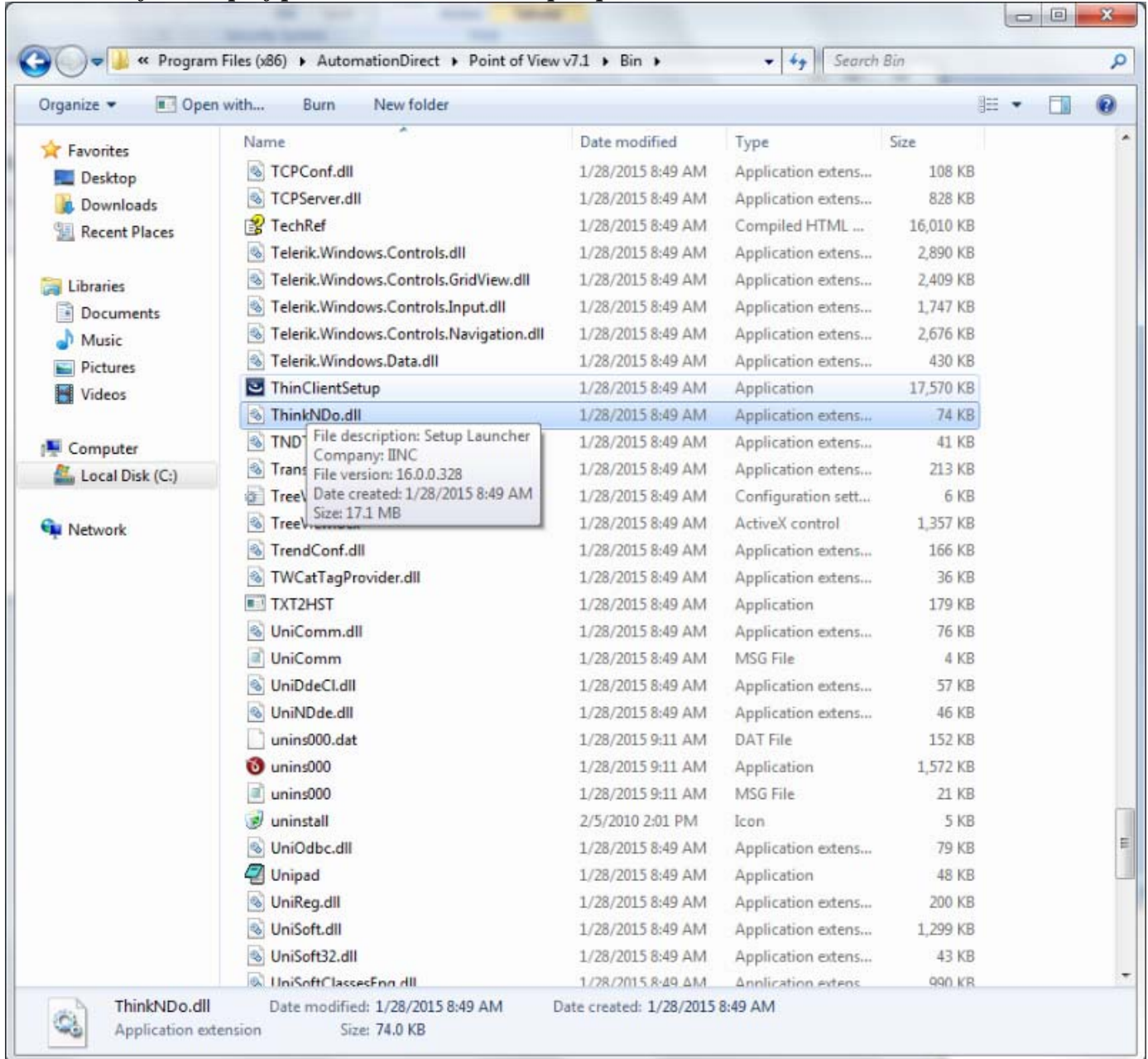


THIS INFORMATION PROVIDED BY AUTOMATIONDIRECT.COM TECHNICAL SUPPORT IS PROVIDED "AS IS" WITHOUT A GUARANTEE OF ANY KIND.

These documents are provided by our technical support department to assist others. We do not guarantee that the data is suitable for your particular application, nor do we assume any responsibility for them in your application.

Step 5 installing and configuring POV Secure Viewer Client

Find the file on your server PC named "ThinClientSetup.exe" This should be located here: C:\Program Files (x86)\AutomationDirect\Point of View v7.1\Bin. *Note this file can also be downloaded from http://ftp.automationdirect.com/pub/pov_thinclient.exe*



Copy this .exe file to all of the computers you wish to run the Secure Viewer client on and run the .exe file following all of the installation prompts.



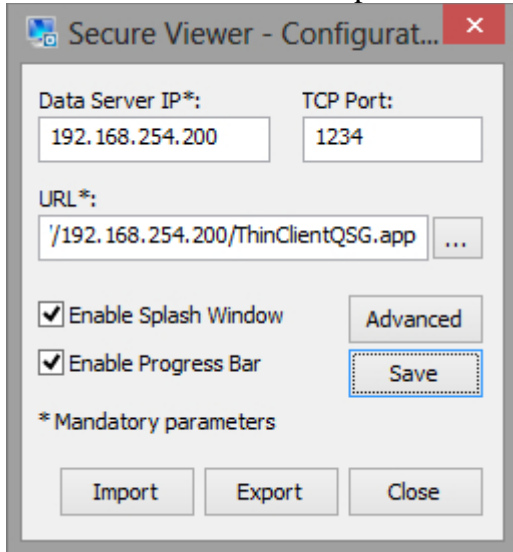
THIS INFORMATION PROVIDED BY AUTOMATIONDIRECT.COM TECHNICAL SUPPORT IS PROVIDED "AS IS" WITHOUT A GUARANTEE OF ANY KIND.

These documents are provided by our technical support department to assist others. We do not guarantee that the data is suitable for your particular application, nor do we assume any responsibility for them in your application.

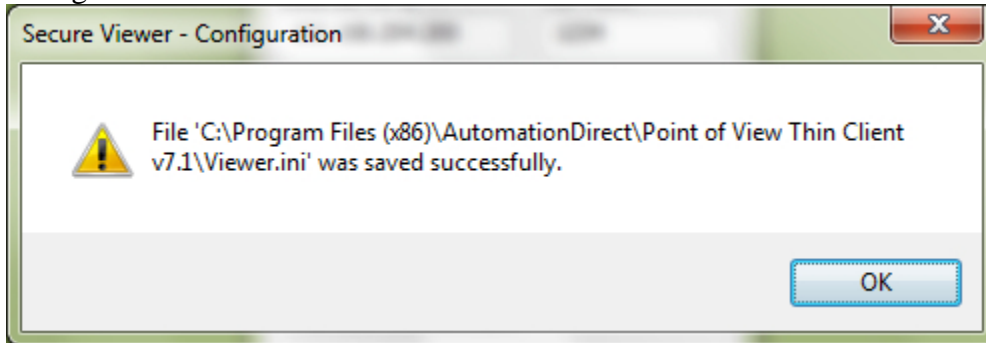
After the Secure viewer client is installed you will need to configure it to communicate with your POV server. Open the Secure Viewer Configuration. By selecting <Windows key> All programs-> AutomationDirect->Point of Viewer Secure Viewer v7.1 Configuration.

In the Data Server IP address field enter the IP of your Data Server.

In the URL field enter "http://<IP address of Data Server>/projectname.app"



Click on save. When you get the following message, click ok then close the Secure Viewer configuration window.





THIS INFORMATION PROVIDED BY AUTOMATIONDIRECT.COM TECHNICAL SUPPORT IS PROVIDED "AS IS" WITHOUT A GUARANTEE OF ANY KIND.

These documents are provided by our technical support department to assist others. We do not guarantee that the data is suitable for your particular application, nor do we assume any responsibility for them in your application.

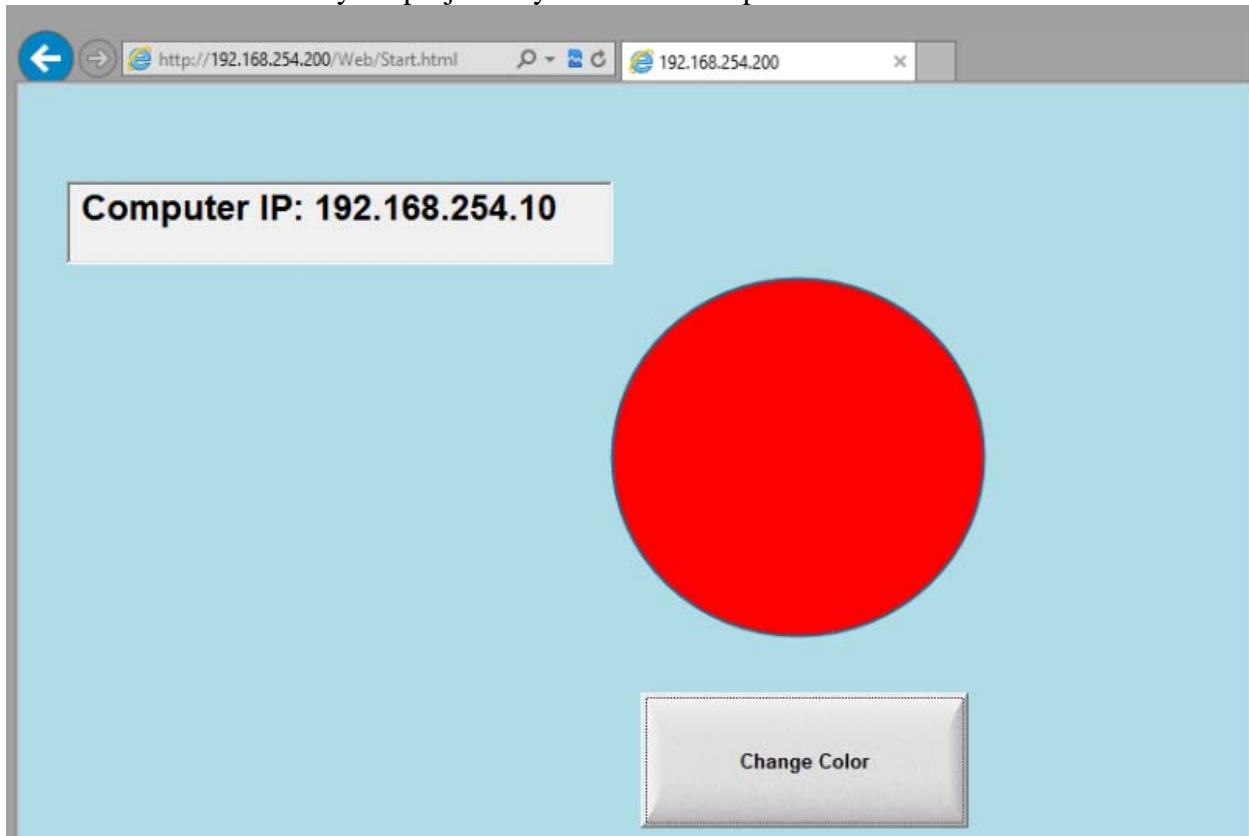
Step 6 running the project

If you have setup all of the steps and IIS has been restarted start your POV runtime project on the server.

Check the Web thin client by opening up Internet Explorer and entering

<IP Address of webserver>/Web/<Startup screen or Screen group>.html into the address field.

You will get a message at least the first time asking if it is OK to install an ActiveX object. Click OK. You should now see your project in your Internet Explorer browser.

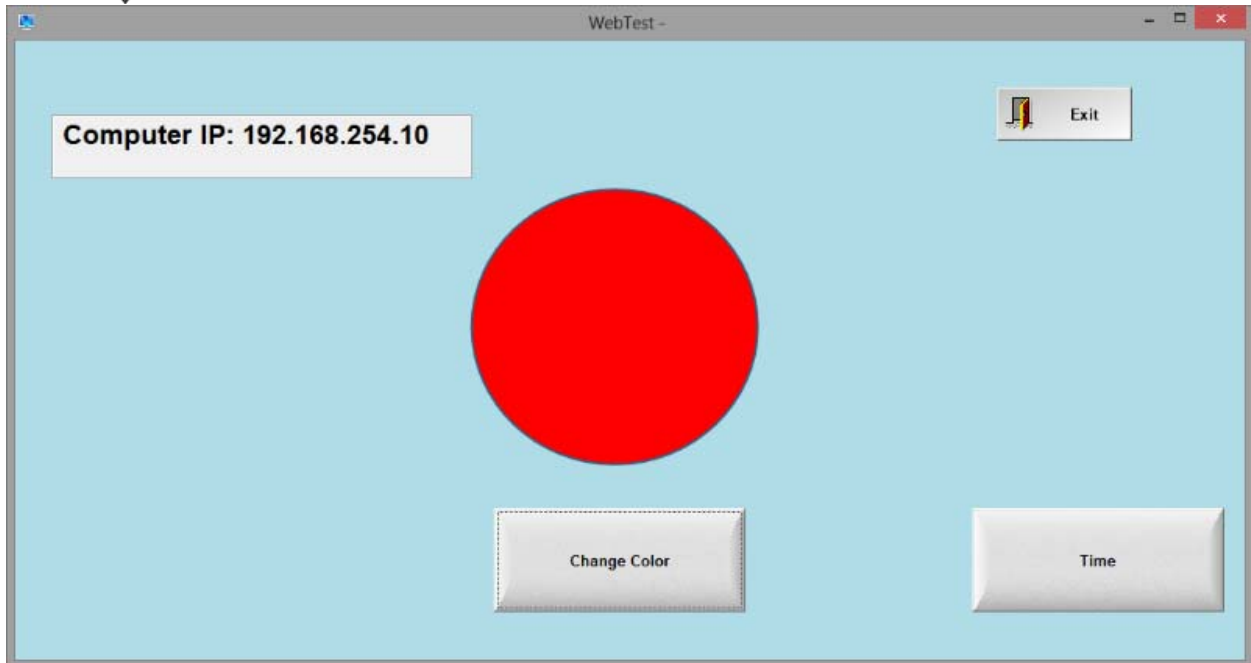


Next test the Secure View Client by going to the start menu-> All Programs-> AutomationDirect->Point of View Thin Client v7.1



THIS INFORMATION PROVIDED BY AUTOMATIONDIRECT.COM TECHNICAL SUPPORT IS PROVIDED "AS IS" WITHOUT A GUARANTEE OF ANY KIND.

These documents are provided by our technical support department to assist others. We do not guarantee that the data is suitable for your particular application, nor do we assume any responsibility for them in your application.



Secure viewer client running

Troubleshooting

If this doesn't work and you have a project functioning locally check your MIME types and Bindings. Make sure you published as HTML in POV then restart IIS. If all else fails reference the following video:

https://www.youtube.com/watch?v=VfntNSiGQjs&index=6&list=PLPdypWXY_ROrocsPa_5s0SQgsaEfKYG3

Technical

Assistance: If you have questions regarding this Application Note, please contact us at 770-844-4200 for further assistance.