



APPLICATION NOTE

THIS INFORMATION PROVIDED BY AUTOMATIONDIRECT.COM TECHNICAL SUPPORT IS PROVIDED "AS IS" WITHOUT A GUARANTEE OF ANY KIND.

These documents are provided by our technical support department to assist others. We do not guarantee that the data is suitable for your particular application, nor do we assume any responsibility for them in your application.

Product Family: Networking Hardware

Number: AN-NH-011

Subject: Saving a Configuration File

Date Issued: Dec 14, 2011

Revision: Original

Confirmation of a Managed Switch

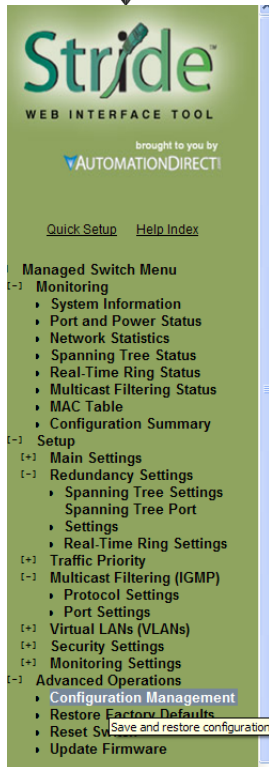
This information applies only to managed switches.

All configuration management is done from the Advanced Operations menu, on the Configuration Management screen. From this screen, you can upload and download checkpoints to and from the switch.

NOTE: These switches do not allow multiple configurations to be stored on the switch concurrently.

HTTP Download

1. Log into the switch with your username and password (default: admin/admin).
2. From the Managed Switch menu, choose Advanced Operations>Configuration Management:



THIS INFORMATION PROVIDED BY AUTOMATIONDIRECT.COM TECHNICAL SUPPORT IS PROVIDED "AS IS" WITHOUT A GUARANTEE OF ANY KIND.

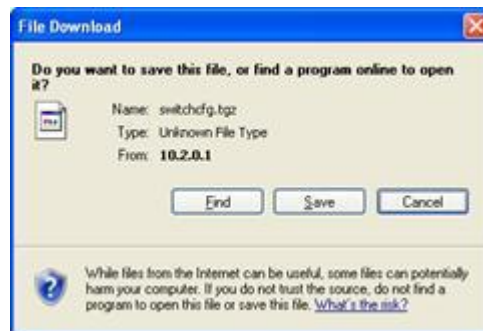
These documents are provided by our technical support department to assist others. We do not guarantee that the data is suitable for your particular application, nor do we assume any responsibility for them in your application.

CONFIGURATION MANAGEMENT

The configuration may be saved and restored from a single checkpoint file. That file may be copied to or from your local computer or a TFTP server to allow multiple checkpoints or secure storage. When restoring a checkpoint, you may choose to restore network settings (DHCP enabled, IP address, subnet, and gateway) or to preserve current network settings.

3. On the Configuration Management page, click **Save Checkpoint** to create a configuration checkpoint. The other controls on the page activate when you click **Save Checkpoint**.

4. On the **Save or retrieve a file to your local system** section of the page, click **Download Checkpoint**. The File Download dialog box displays on the screen.

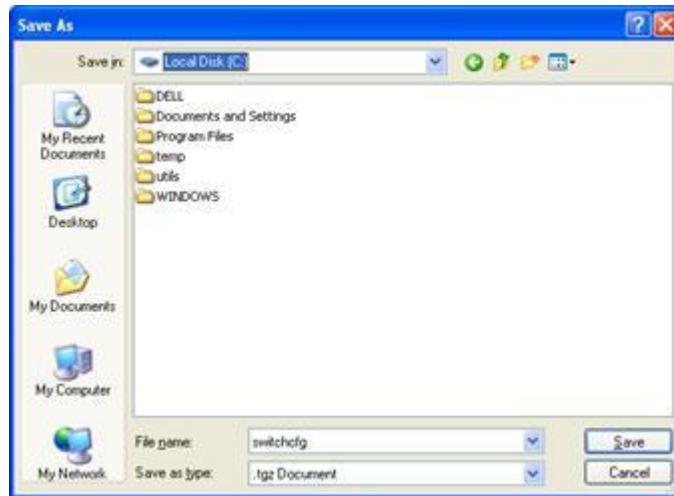


5. Click **Save**. The Save As dialog box displays on the screen.



THIS INFORMATION PROVIDED BY AUTOMATIONDIRECT.COM TECHNICAL SUPPORT IS PROVIDED "AS IS" WITHOUT A GUARANTEE OF ANY KIND.

These documents are provided by our technical support department to assist others. We do not guarantee that the data is suitable for your particular application, nor do we assume any responsibility for them in your application.

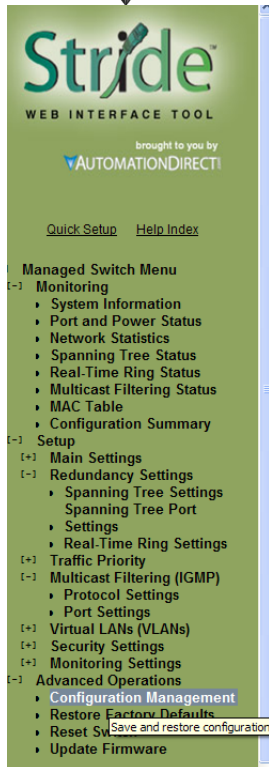


6. In the **Save in** drop-down list, navigate to the location on your computer to which you would like to save the configuration checkpoint.
7. Change the **File name**, if desired. The default name is **switchcfg.tgz**.
8. Click **Save**.

You have now saved a copy of the current switch configuration.

TFTP Download

1. Log into the switch with your username and password (default: admin/admin).
2. From the Managed Switch menu, choose Advanced Operations>Configuration Management.



THIS INFORMATION PROVIDED BY AUTOMATIONDIRECT.COM TECHNICAL SUPPORT IS PROVIDED "AS IS" WITHOUT A GUARANTEE OF ANY KIND.

These documents are provided by our technical support department to assist others. We do not guarantee that the data is suitable for your particular application, nor do we assume any responsibility for them in your application.

CONFIGURATION MANAGEMENT

The configuration may be saved and restored from a single checkpoint file. That file may be copied to or from your local computer or a TFTP server to allow multiple checkpoints or secure storage. When restoring a checkpoint, you may choose to restore network settings (DHCP enabled, IP address, subnet, and gateway) or to preserve current network settings.

Preserve network settings

Save or retrieve a file from your local system

Save or retrieve a file from a TFTP server

TFTP server

Remote filename

4. Under the section titled **Save or retrieve a file from a TFTP server**, type the IP address of your TFTP server in the **TFTP server** box. In the **Remote filename** box, type the name you would like the file to have when it is transferred.
5. Click **Save to TFTP** to begin the transfer.
6. You have now saved a copy of the current switch configuration.

Technical

Assistance: If you have questions regarding this Application Note, please contact us at 770-844-4200 for further assistance.