



APPLICATION NOTE

THIS INFORMATION PROVIDED BY AUTOMATIONDIRECT.COM TECHNICAL SUPPORT IS PROVIDED "AS IS" WITHOUT A GUARANTEE OF ANY KIND.

These documents are provided by our technical support department to assist others. We do not guarantee that the data is suitable for your particular application, nor do we assume any responsibility for them in your application.

Product Family: Networking Hardware

Number: AN-NH-005

Subject: Loading an Existing Configuration File

Date Issued: Dec 14, 2011

Revision: Original

This information applies only to Stride **managed** switches.

All configuration management is done from the Advanced Operations menu, on the Configuration Management page. From this page, you can upload and download checkpoints to and from the switch.

NOTE: These models do not allow multiple configurations to be stored on the switch concurrently.

To save a configuration file locally:

From the Configuration Management page, click on the Save Checkpoint button. This saves to the switch memory a backup of the current configuration, a "checkpoint." One checkpoint can exist on the switch in addition to the current configuration.

Once a checkpoint has been saved, it can be downloaded to the local system: Browse to the folder where the checkpoint file will be saved as a zipped file. The default extension is .tgz

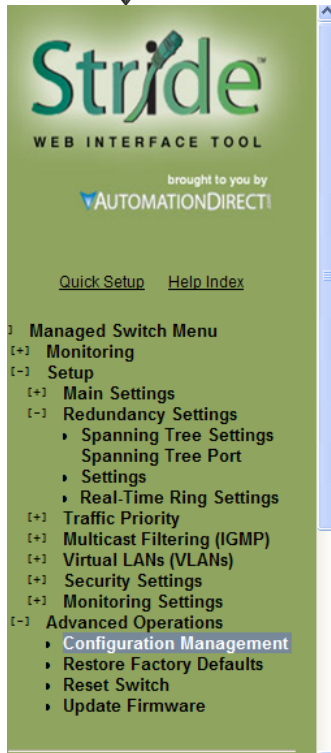
HTTP Upload

1. From the Configuration Management page, click the **Browse** button under the **Save or retrieve a file to your local system** section of the page.



THIS INFORMATION PROVIDED BY AUTOMATIONDIRECT.COM TECHNICAL SUPPORT IS PROVIDED "AS IS" WITHOUT A GUARANTEE OF ANY KIND.

These documents are provided by our technical support department to assist others. We do not guarantee that the data is suitable for your particular application, nor do we assume any responsibility for them in your application.



CONFIGURATION MANAGEMENT

Help

The configuration may be saved and restored from a single checkpoint file. That file may be copied to or from your local computer or a TFTP server to allow multiple checkpoints or secure storage. When restoring a checkpoint, you may choose to restore network settings (DHCP enabled, IP address, subnet, and gateway) or to preserve current network settings.

Preserve network settings

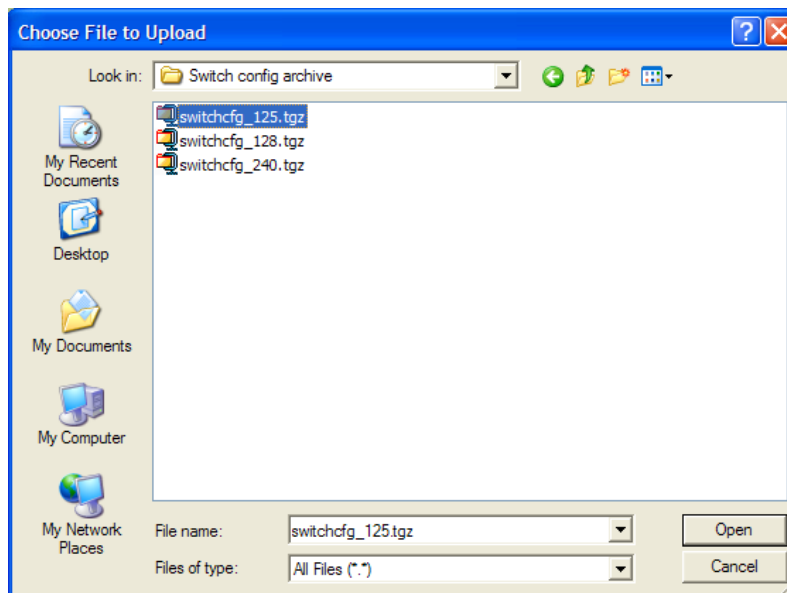
Save or retrieve a file from your local system

Save or retrieve a file from a TFTP server

TFTP server

Remote filename

2. The Choose File to Upload dialog box displays on the screen. Locate and select the configuration checkpoint you wish to upload. The default name of a saved configuration file is switchcfg.tgz.



3. Click Open.
4. On the Configuration Management page, click **Upload Checkpoint**.



THIS INFORMATION PROVIDED BY AUTOMATIONDIRECT.COM TECHNICAL SUPPORT IS PROVIDED "AS IS" WITHOUT A GUARANTEE OF ANY KIND.

These documents are provided by our technical support department to assist others. We do not guarantee that the data is suitable for your particular application, nor do we assume any responsibility for them in your application.

5. To make the configuration in the checkpoint active, click the **Restore Checkpoint** button.

NOTE: To keep the switch at its current IP address and subnet mask instead of the IP address in the configuration file, click **Preserve Network Settings**. This feature is commonly used to load the same configuration into multiple switches that must be configured identically except for the address.

6. You have now loaded the configuration file as the current configuration. Although most settings are immediately active, you may wish to restart the switch if there are significant changes in the configuration.

TFTP Upload

1. Under the **Save or retrieve a file from a TFTP server** section of the Configuration Management page, type the IP address of your TFTP server in the **TFTP server** box. In the **Remote filename** box, type the name of the checkpoint you want to upload.

2. Next, click **Retrieve from TFTP**.

3. To make the configuration in the checkpoint active, click **Restore Checkpoint**.

NOTE: To keep the switch at its current IP address and subnet mask instead of the IP address in the configuration file, click **Preserve Network Settings**. This feature is commonly used to load the same configuration into multiple switches that must be configured identically except for the address.

4. You have now loaded the configuration file as the current configuration. Although most settings are immediately active, you may wish to restart the switch if there are significant changes in the configuration.

Technical

Assistance: If you have questions regarding this Application Note, please contact us at 770-844-4200 for further assistance.