



APPLICATION NOTE

THIS INFORMATION PROVIDED BY AUTOMATIONDIRECT.COM TECHNICAL SUPPORT IS PROVIDED "AS IS" WITHOUT A GUARANTEE OF ANY KIND.

These documents are provided by our technical support department to assist others. We do not guarantee that the data is suitable for your particular application, nor do we assume any responsibility for them in your application.

Product Family: EZTouch

Number: AN-EZ-013

Subject: Using EZTouch with an ALLEN-BRADLEY ControlLogix and CompactLogix.

Date Issued: 10/24/05

Revision: Original

This application note is meant to show how to configure a ControlLogix and/or CompactLogix to work with an EZ Touch. In order for the EZtouch to work you will need a Full Featured Panel that has all of the Allen-Bradley serial drivers. The EZTouch will have to be connected to the 9 pin serial port of the AB Processor. This port is considered Channel 0 on the PLC. You can use the EZ-SLC-232-CBL to connect the EZTouch to this port on the PLC. You will also need the RS Logix 5000 software for configuring the Control Logix and/or Compact Logix. Lastly you will need EZTouch Edit for programming the EZtouch. In this example we will be using the EZ-S6C-F and 1756-L55. The configuration of the PLC is the same for the Compact and Control Logix.

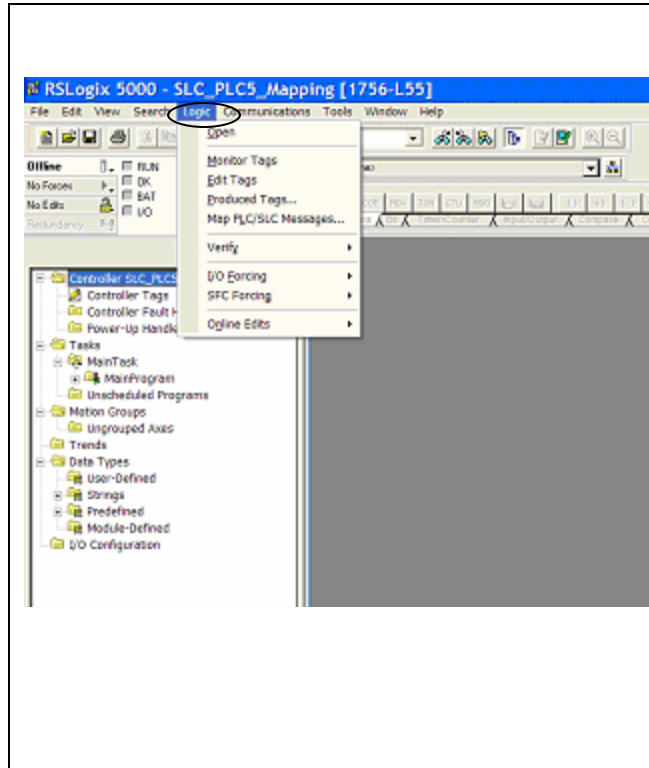
Technical

Assistance: If you have questions regarding this Application Note, please contact us at 770-844-4200 for further assistance.



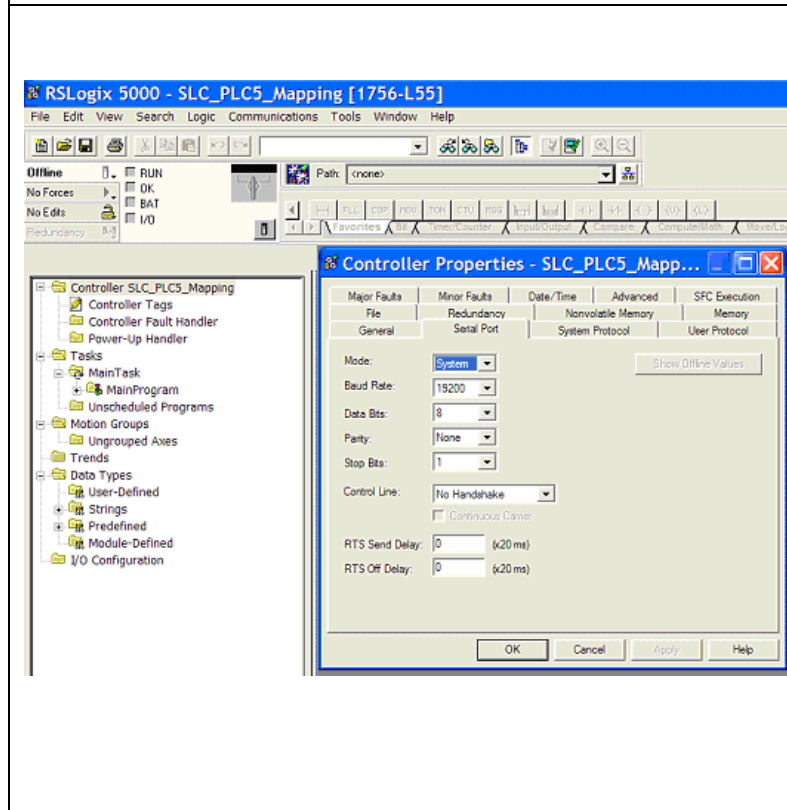
THIS INFORMATION PROVIDED BY AUTOMATIONDIRECT.COM TECHNICAL SUPPORT IS PROVIDED "AS IS" WITHOUT A GUARANTEE OF ANY KIND.

These documents are provided by our technical support department to assist others. We do not guarantee that the data is suitable for your particular application, nor do we assume any responsibility for them in your application.



Step 1.

Open your RS Logix 5000 Project. Click on "Logic" and Click "Open" to open your Controller Properties.



Step 2.

In the "Controller Properties" window click on the "Serial Port" Tab. This tab sets up the 9 – Pin port on the ControlLogix Processor.* In this example we are going to leave the port at its default settings, which is:

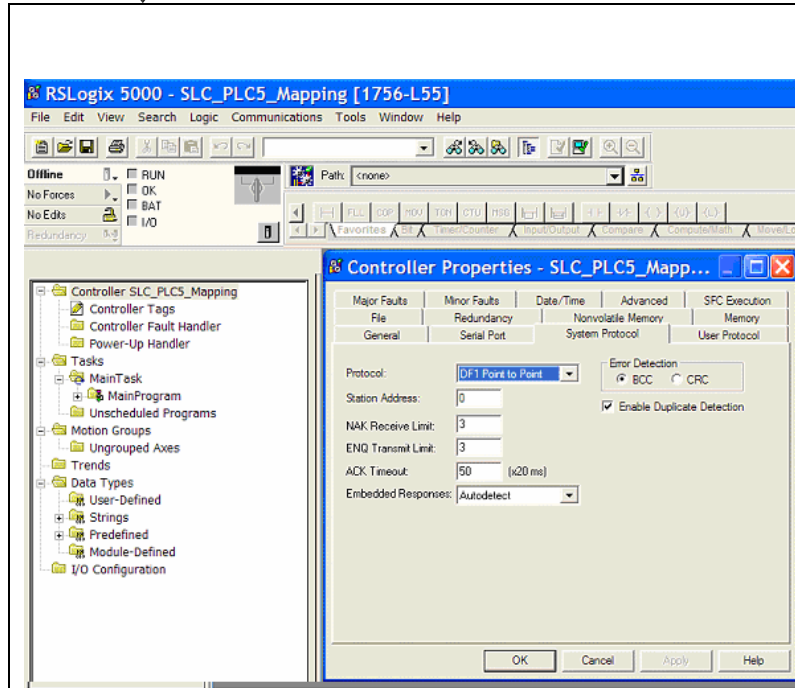
- Mode: System
- Baud Rate: 19200
- Data Bits: 8
- Parity: None
- Stop Bits: 1
- Control Line: No Handshake

*If you are programming through Channel 0, and you make changes to these parameters you may lose communications.



THIS INFORMATION PROVIDED BY AUTOMATIONDIRECT.COM TECHNICAL SUPPORT IS PROVIDED "AS IS" WITHOUT A GUARANTEE OF ANY KIND.

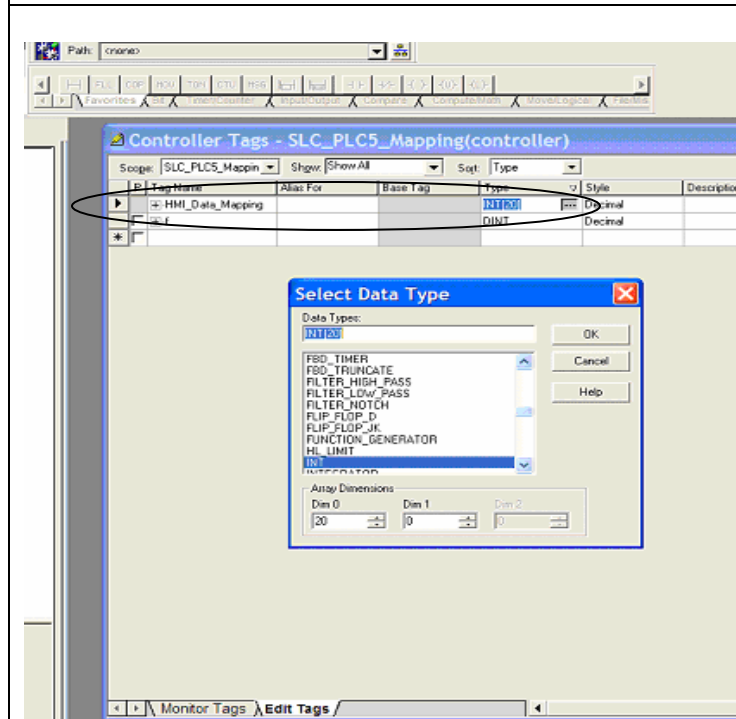
These documents are provided by our technical support department to assist others. We do not guarantee that the data is suitable for your particular application, nor do we assume any responsibility for them in your application.



Step 3.

Click on “System Protocol” Tab select the protocol you will be using to communicate with EZTouch. We will be using “DF1 Point to Point”. The “Error Detection” method is also important so record this for later. Leave it at default which is “BCC”. Once you have made these changes, Click “Apply” then “OK” to accept these settings.*

*If you are programming through Channel 0, and you make changes to these parameters you may lose communications.



Step 4.

Open the Controller Tags Database. Now enter a New Tag with these Properties:

Tagname: HMI_Data_Mapping
Type: INT
Dim0: 20 *

If it was created correctly it will look like the screen shot to in Figure 5.

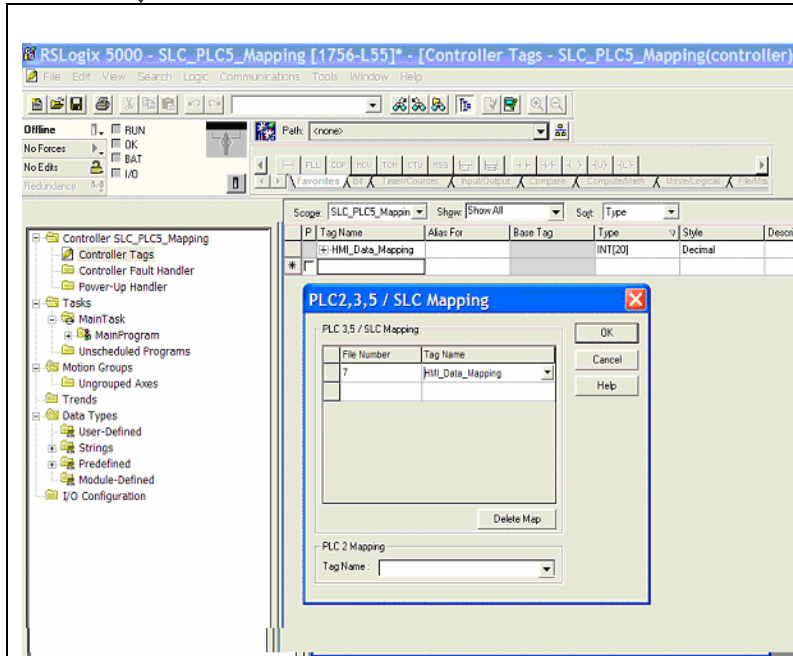
*The maximum size of the array is 255.

Figure 5



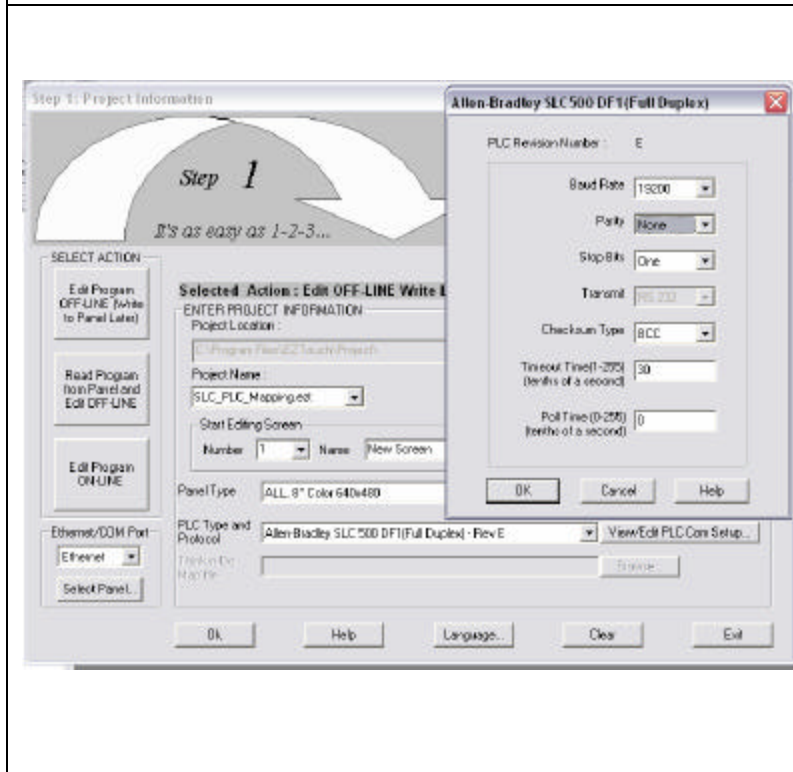
THIS INFORMATION PROVIDED BY AUTOMATIONDIRECT.COM TECHNICAL SUPPORT IS PROVIDED "AS IS" WITHOUT A GUARANTEE OF ANY KIND.

These documents are provided by our technical support department to assist others. We do not guarantee that the data is suitable for your particular application, nor do we assume any responsibility for them in your application.



Step 5.

Click on “Logic” and Open “Map PLC/SLC Messages...”, and this pop-up should appear. This window sets up how the tag will appear to the EZTouch. “File Type” is determined by the Tagname Data Type, and the “File Number” is assigned by the user in this window. Set the File Number to “7” and the Tagname to “HMI_Data_Mapping”. Since “HMI_Data_Mapping” is an Array of 20 “INT” and we gave File Number “7”, it will appear to the EZTouch as N7:0 – N7:19. Click “OK” to accept these changes. You must now Download these changes to the PLC.



Step 6.

Open EZTouch Edit and Click “Edit Program OFFLINE”, and select your Project under “Project Name”. Under “PLC Type and Protocol” select the Allen-Bradley SLC 500(Full-Duplex) Driver, and then click “View/Edit PLC Com Setup” to configure the driver. The Driver settings for the EZTouch have to match the setting of the PLC Serial Port. Refer to Step 2 and 3 of this application note for those settings. Click “Ok” to accept these settings. Now you can Click “Ok” to open your Project.



THIS INFORMATION PROVIDED BY AUTOMATIONDIRECT.COM TECHNICAL SUPPORT IS PROVIDED "AS IS" WITHOUT A GUARANTEE OF ANY KIND.

These documents are provided by our technical support department to assist others. We do not guarantee that the data is suitable for your particular application, nor do we assume any responsibility for them in your application.