



## **AutomationDirect Application Note**

**Product Family: EZTouch**

**Number: AN-EZ-010**

**Subject: CompactLogix and ControlLogix Tags**

**Date Issued: 10/23/03**

**Revision: Original**

### **Steps to configure CompactLogix and ControlLogix Tags for use with EZTouch**

#### **INTRODUCTION**

This application explains the process of connecting an EZ-Touch panel to ControlLogix PLC

#### **TOOLS NEEDED**

1. RSLogix 5000
2. EZ-Touch panel (*All EZ Touch panel models are supported*).
3. EZ-Touch Edit software

#### **QUICK NOTES**

**Step 1:** Create a New tag in RSLogix 5000.

**Step 2:** Map the tag as a PLC/SLC Message.

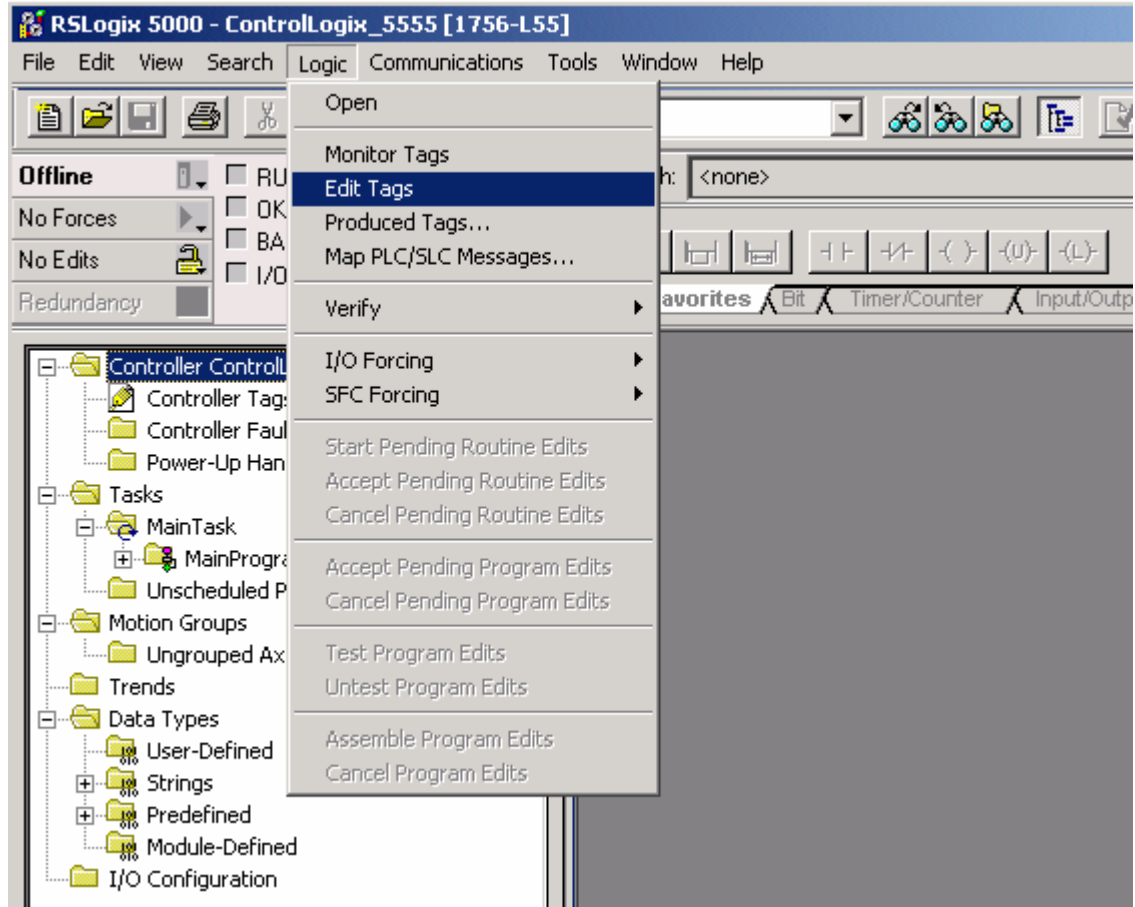
**Step 3:** Save the project and download it to the PLC for the changes to take effect.

**AUTOMATIONDIRECT** THIS INFORMATION PROVIDED BY AUTOMATIONDIRECT.COM TECHNICAL SUPPORT IS PROVIDED "AS IS" WITHOUT A GUARANTEE OF ANY KIND. These documents are provided by our technical support department to assist others. We do not guarantee that the data is suitable for your particular application, nor do we assume any responsibility for them in your application.

Note: RSLogix must be Offline to create tags or to map them as PLC/SLC Messages.

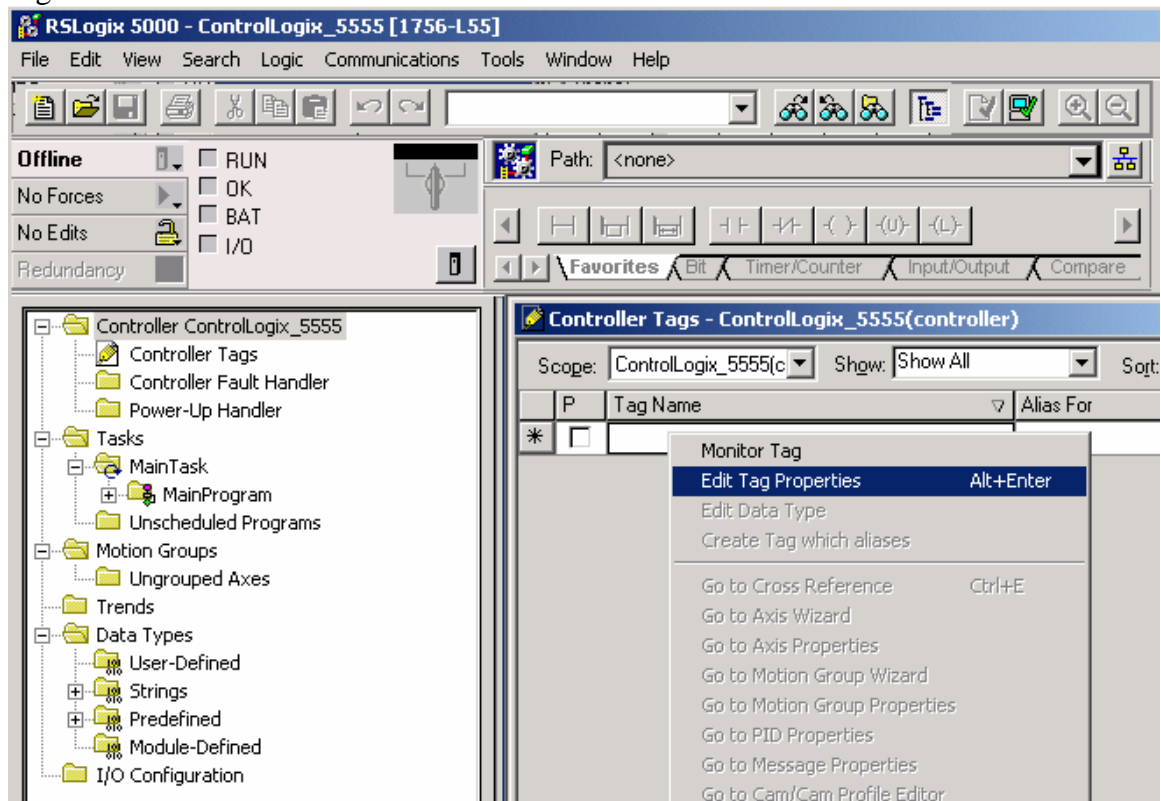
## Step 1: Create a New tag in RSLogix 5000.

Figure 1.



1. While RSLogix 5000 is offline go to LOGIC > EDIT TAGS...

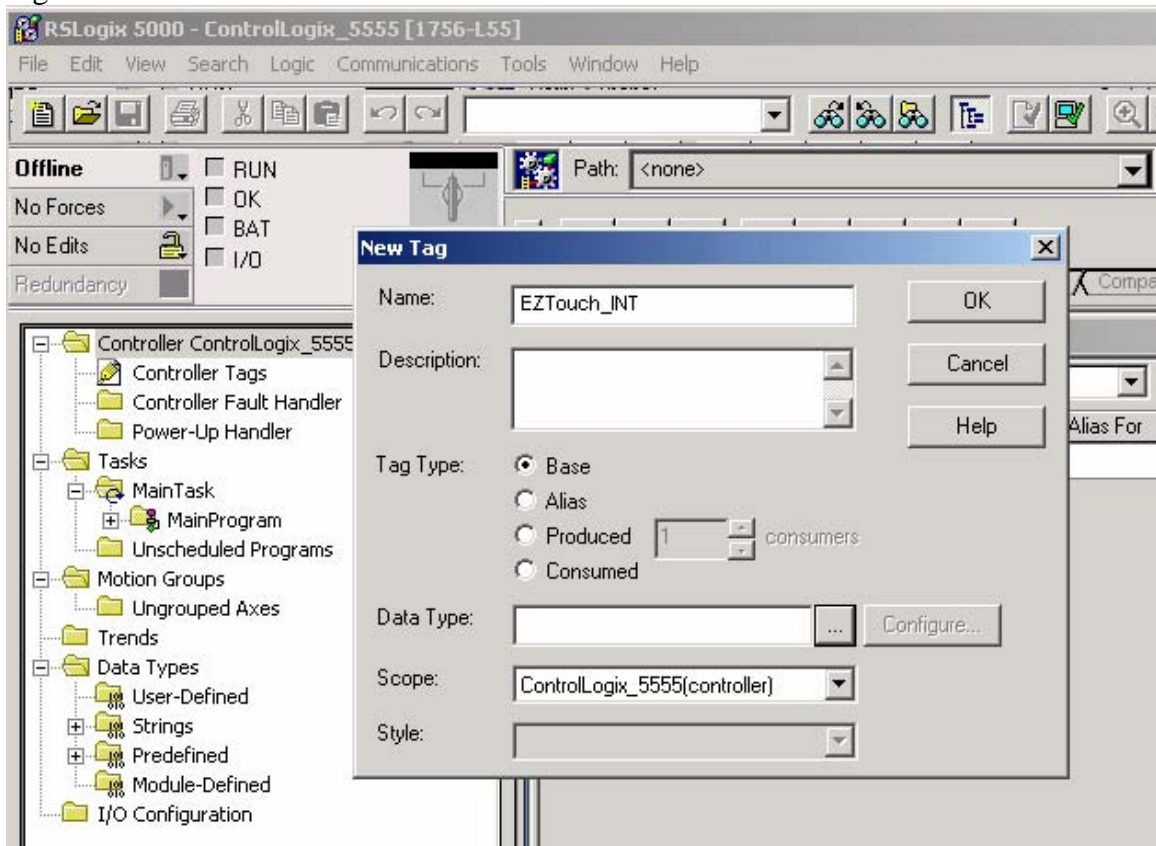
Figure 2.



2. Once the EDIT TAG window is open, right-click on an empty cell and choose EDIT TAG PROPERTIES.
3. After choosing EDIT TAG PROPERTIES the window in figure 3 will be shown.

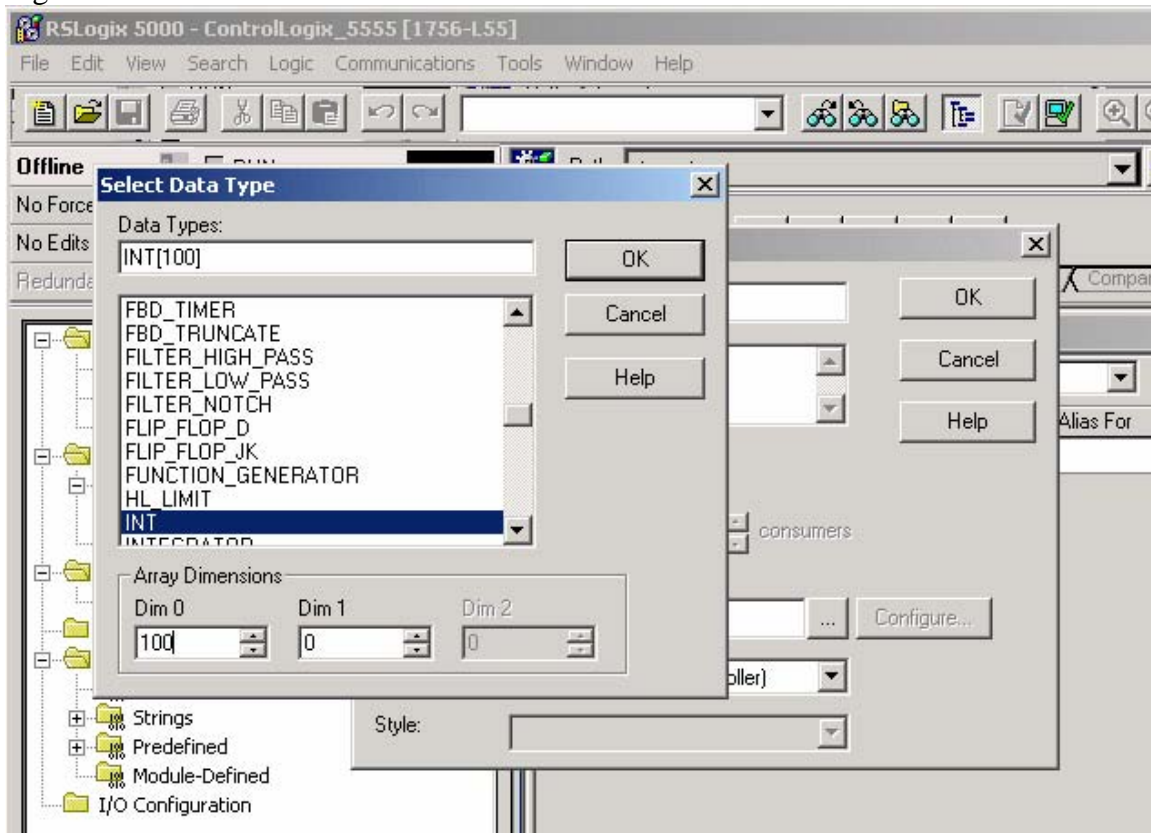
**AUTOMATIONDIRECT** THIS INFORMATION PROVIDED BY AUTOMATIONDIRECT.COM TECHNICAL SUPPORT IS PROVIDED "AS IS" WITHOUT A GUARANTEE OF ANY KIND. These documents are provided by our technical support department to assist others. We do not guarantee that the data is suitable for your particular application, nor do we assume any responsibility for them in your application.

Figure 3.



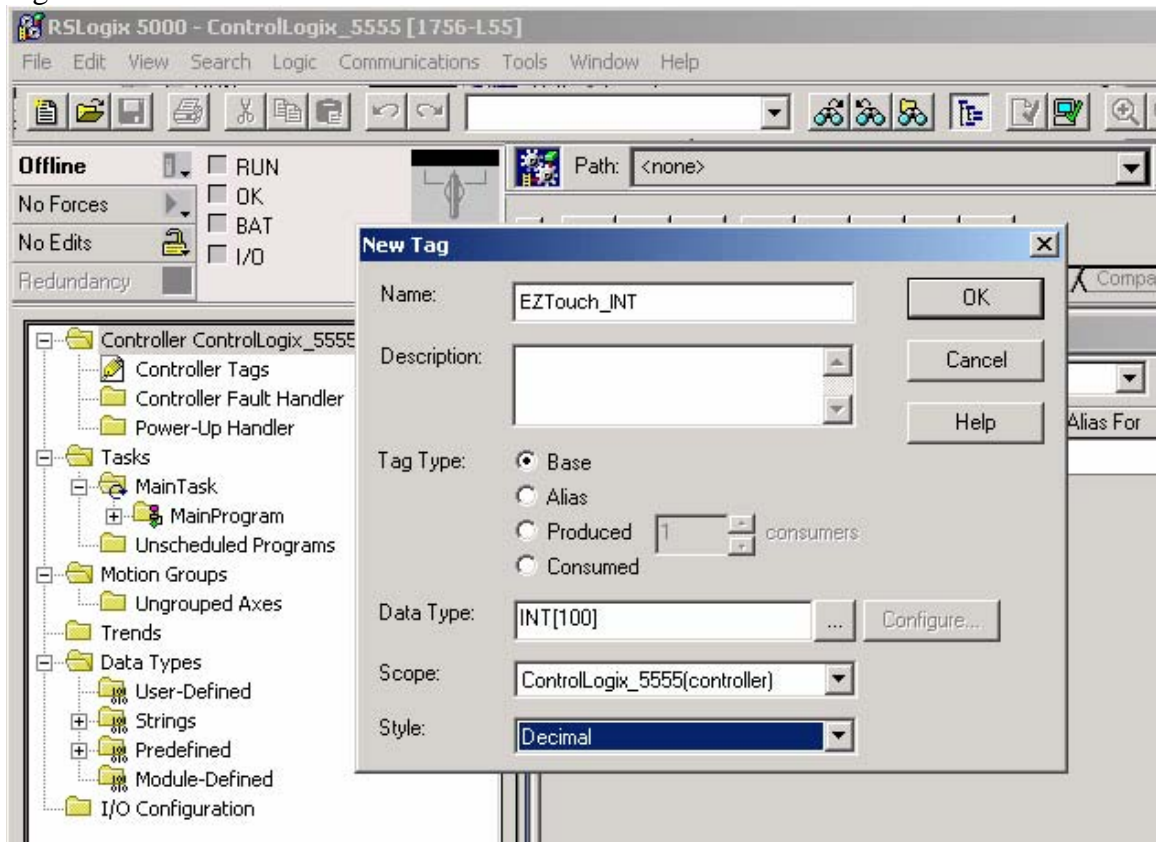
4. Give your new tag a name, for this example we have used “EZTouch\_INT”. Enter a description if needed (this is optional and not required).
5. Choose a TAG TYPE. For our purpose we will use a BASE type tag.
6. Click on the “...” box next to the DATA TYPE field to bring up the menu in Figure 4.

Figure 4.



7. Scroll down through the list until you come to “INT” or type “INT” into the DATA TYPE field. The data types supported by the EZTouch for use with ControlLogix are, INT, REAL (floating pt.). The BOOL data type is not recommended for use as it may cause unpredictable results.
8. After a DATA TYPE of INT is selected we will need to move down and define the ARRAY DIMENSIONS. The array dimensions define the number of elements in your tag, ex: 100 means that you have created 100 data elements using the INT format.
9. You need only to fill in a value for DIM 0.
10. Once the Data Type and Array Dimensions have been established click OK.

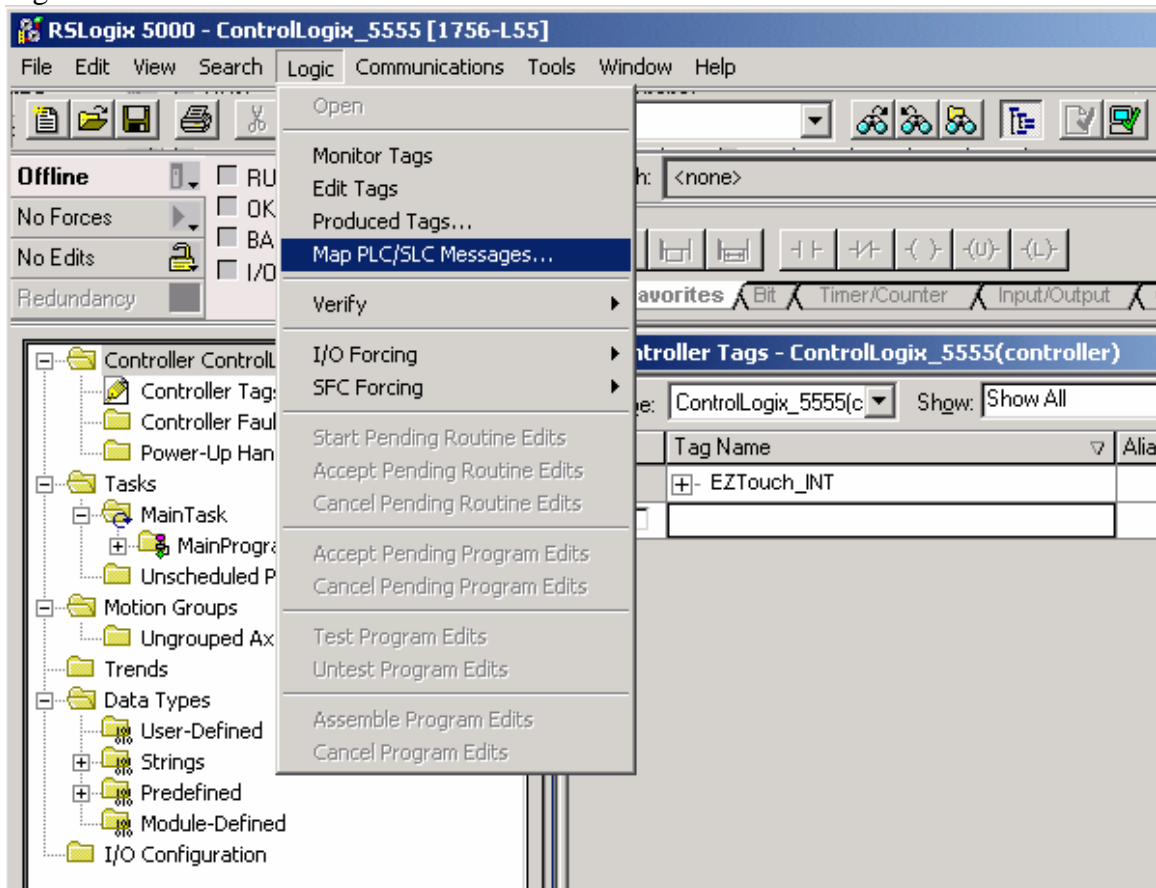
Figure 5.



11. After clicking OK from above your NEW TAG window should look as in Figure 5.
12. To complete the creation of your new tag, select a SCOPE & STYLE. In our example we have defined the tag as a CONTROLLER tag. Our STYLE type is Decimal.
13. Click OK to finalize the tag creation.

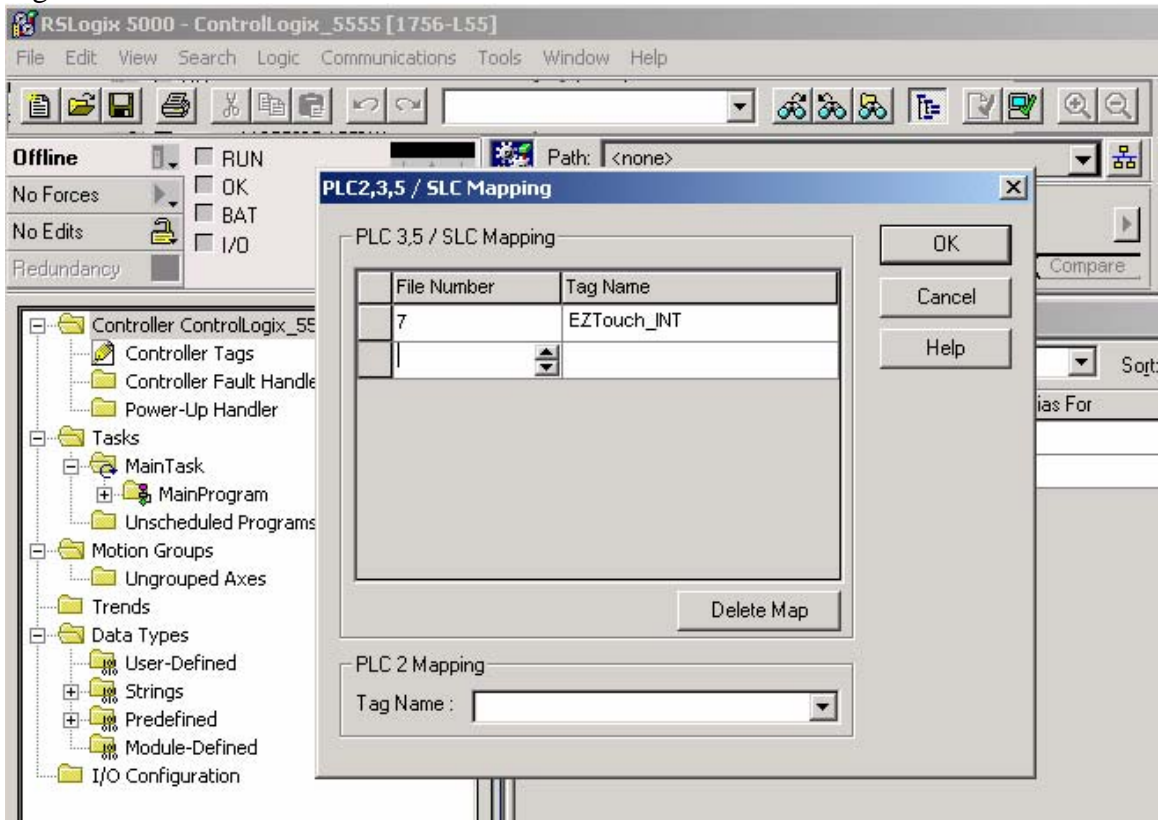
## Step 2: Map the tag as a PLC/SLC Message.

Figure 6.



1. Select LOGIC > MAP PLC/SLC MESSAGES... The window in Figure 7 will appear.

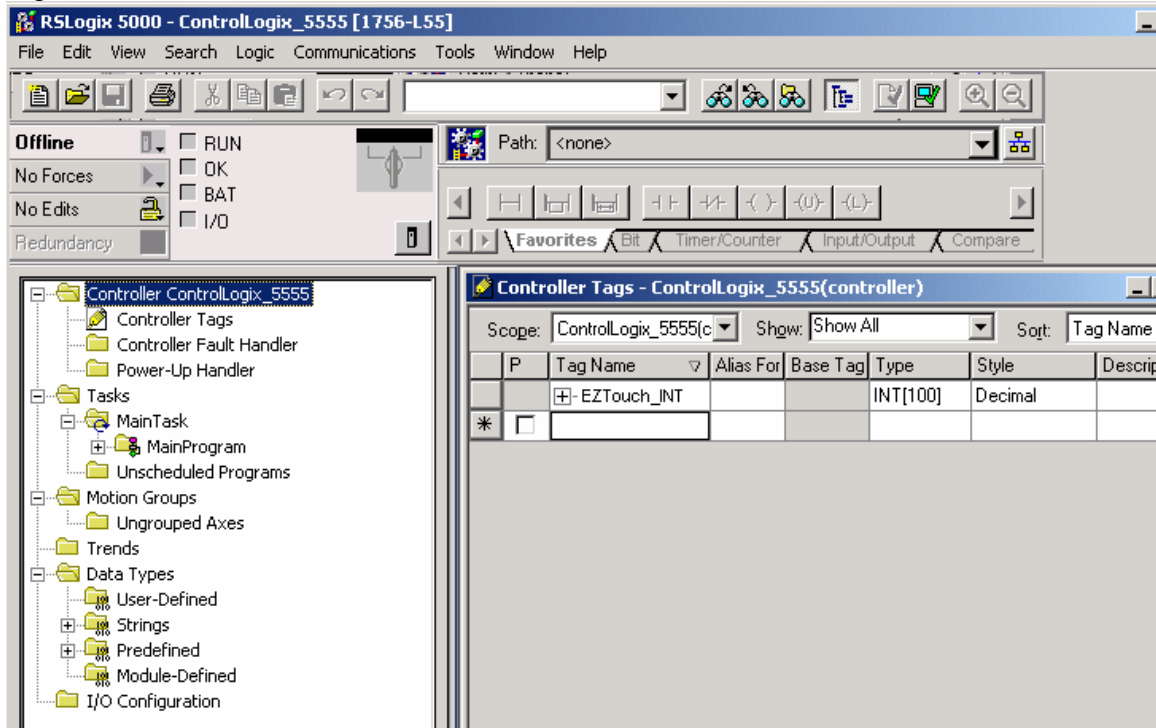
Figure 7.



2. Define a FILE NUMBER to be associated with our newly created tag. In our example we have used a File Number of 7.
3. Next, select the TAG NAME that you would like to associate with the File Number 7. Here we have selected "EZTouch\_INT"
4. To complete the Mapping click OK.



Figure 8.



After you click OK from the PLC/SLC Mapping window your RSLogix 5000 screen should look similar to Figure 8 above.

**Step 3:** Save the project and download it to the PLC for the changes to take effect.

Now all that is needed is to save and download your project to the PLC. Repeat the Tag Creation process and PLC/SLC Mapping process as needed.

After completing the above steps your EZTouch will be able to access tags N7:0 – N7:99.

**AUTOMATIONDIRECT** THIS INFORMATION PROVIDED BY AUTOMATIONDIRECT.COM TECHNICAL SUPPORT IS PROVIDED "AS IS" WITHOUT A GUARANTEE OF ANY KIND. These documents are provided by our technical support department to assist others. We do not guarantee that the data is suitable for your particular application, nor do we assume any responsibility for them in your application.