



# APPLICATION NOTE

THIS INFORMATION PROVIDED BY AUTOMATIONDIRECT.COM TECHNICAL SUPPORT IS PROVIDED "AS IS" WITHOUT A GUARANTEE OF ANY KIND.

These documents are provided by our technical support department to assist others. We do not guarantee that the data is suitable for your particular application, nor do we assume any responsibility for them in your application.

**Product Family:** C-more (with ControlLogix)

**Number:** AN-EA-002

**Subject:** Import of Alias & I/O Tags

**Date Issued:** Sept 18, 2007

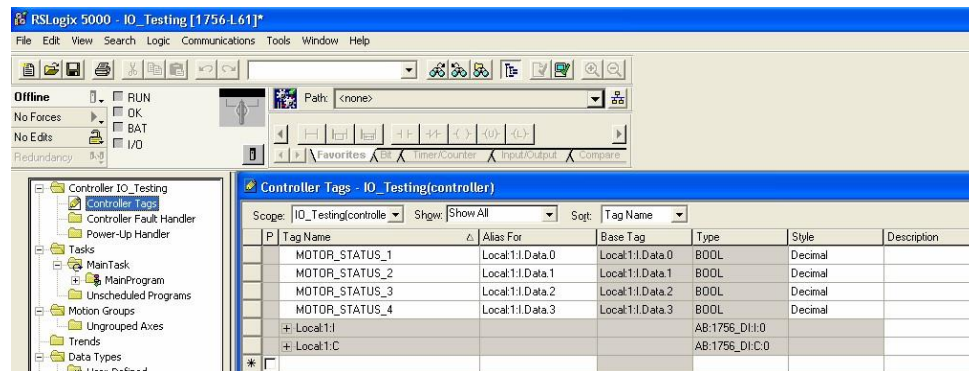
**Revision:** Jan 6, 2016

Starting with **C-more Programming Software Version 2.1**, the software can import Aliased Boolean I/O Tags. These may be imported directly using the L5K file (generated by "Save-As" from within the RSLogix software.) Only non-Aliased Boolean I/O Tags need special handling by the user as documented in this application note." This document describes a method to generate those tags for C-more quickly and easily without having to retype them. This process will require licensed installs of the following software; RSLogix5000, Microsoft Excel, and the C-more Programming Software.

It is desirable to assign Alias Tag Names to any I/O that is accessed by the Operator Panel. This can reduce the total number of tags residing in the Panel and also prevent the need to make changes in the panel if the I/O is remapped at a later time (ex: card slot number change).

## Within the RSLogix Tag Viewer:

1. Open the Controller Tags window by double-clicking in the Controller Organizer
2. Select the "Edit Tags" tab along the lower edge of the window



3. (optional) Sort the tags by right-clicking the Tag Name field then "Sort"
4. Find your I/O Tags starting with "Local: ..."
5. Expand the tree to display all the tags that you require (only visible tags will be copied, you must expand any User Define Data Types to their basic elements)



# APPLICATION NOTE

THIS INFORMATION PROVIDED BY AUTOMATIONDIRECT.COM TECHNICAL SUPPORT IS PROVIDED "AS IS" WITHOUT A GUARANTEE OF ANY KIND.

These documents are provided by our technical support department to assist others. We do not guarantee that the data is suitable for your particular application, nor do we assume any responsibility for them in your application.

Controller Tags - IO_Testing(controller)						
Scope:	IO_Testing(controller)	Shgw:	Show All	Sort:	Tag Name	
P	Tag Name	Alias For	Base Tag	Type	Style	Description
	MOTOR_STATUS_1	Local:1:1.Data.0	Local:1:1.Data.0	BOOL	Decimal	
	MOTOR_STATUS_2	Local:1:1.Data.1	Local:1:1.Data.1	BOOL	Decimal	
	MOTOR_STATUS_3	Local:1:1.Data.2	Local:1:1.Data.2	BOOL	Decimal	
	MOTOR_STATUS_4	Local:1:1.Data.3	Local:1:1.Data.3	BOOL	Decimal	
	Local:1:1			AB:1756_DI:1:0		
	+ Local:1:1.Fault			DINT	Binary	
	- Local:1:1.Data			DINT	Binary	
	- Local:1:1.Data.0			BOOL	Decimal	
	- Local:1:1.Data.1			BOOL	Decimal	
	- Local:1:1.Data.2			BOOL	Decimal	
	- Local:1:1.Data.3			BOOL	Decimal	
	- Local:1:1.Data.4			BOOL	Decimal	
	- Local:1:1.Data.5			BOOL	Decimal	

6. Select the first I/O tag you want by clicking the blank square on the left

Controller Tags - IO_Testing(controller)						
Scope:	IO_Testing(controller)	Shgw:	Show All	Sort:	Tag Name	
P	Tag Name	Alias For	Base Tag	Type	Style	Description
<input checked="" type="checkbox"/>	MOTOR_STATUS_1	Local:1:1.Data.0	Local:1:1.Data.0	BOOL	Decimal	
<input type="checkbox"/>	MOTOR_STATUS_2	Local:1:1.Data.1	Local:1:1.Data.1	BOOL	Decimal	
<input type="checkbox"/>	MOTOR_STATUS_3	Local:1:1.Data.2	Local:1:1.Data.2	BOOL	Decimal	
<input type="checkbox"/>	MOTOR_STATUS_4	Local:1:1.Data.3	Local:1:1.Data.3	BOOL	Decimal	
	Local:1:1			AB:1756_DI:1:0		
	+ Local:1:1.Fault			DINT	Binary	
	- Local:1:1.Data			DINT	Binary	
	- Local:1:1.Data.0			BOOL	Decimal	
	- Local:1:1.Data.1			BOOL	Decimal	
	- Local:1:1.Data.2			BOOL	Decimal	
	- Local:1:1.Data.3			BOOL	Decimal	
	- Local:1:1.Data.4			BOOL	Decimal	
	- Local:1:1.Data.5			BOOL	Decimal	

7. Hold the shift key down

8. Select the last I/O tag desired (Page Down or Mouse Down as needed)

Controller Tags - IO_Testing(controller)						
Scope:	IO_Testing(controller)	Shgw:	Show All	Sort:	Tag Name	
P	Tag Name	Alias For	Base Tag	Type	Style	Description
<input checked="" type="checkbox"/>	MOTOR_STATUS_1	Local:1:1.Data.0	Local:1:1.Data.0	BOOL	Decimal	
<input checked="" type="checkbox"/>	MOTOR_STATUS_2	Local:1:1.Data.1	Local:1:1.Data.1	BOOL	Decimal	
<input checked="" type="checkbox"/>	MOTOR_STATUS_3	Local:1:1.Data.2	Local:1:1.Data.2	BOOL	Decimal	
<input checked="" type="checkbox"/>	MOTOR_STATUS_4	Local:1:1.Data.3	Local:1:1.Data.3	BOOL	Decimal	
	Local:1:1			AB:1756_DI:1:0		
	+ Local:1:1.Fault			DINT	Binary	
	- Local:1:1.Data			DINT	Binary	
	- Local:1:1.Data.0			BOOL	Decimal	
	- Local:1:1.Data.1			BOOL	Decimal	
	- Local:1:1.Data.2			BOOL	Decimal	
	- Local:1:1.Data.3			BOOL	Decimal	
	- Local:1:1.Data.4			BOOL	Decimal	
	- Local:1:1.Data.5			BOOL	Decimal	



# APPLICATION NOTE

THIS INFORMATION PROVIDED BY AUTOMATIONDIRECT.COM TECHNICAL SUPPORT IS PROVIDED "AS IS" WITHOUT A GUARANTEE OF ANY KIND.

These documents are provided by our technical support department to assist others. We do not guarantee that the data is suitable for your particular application, nor do we assume any responsibility for them in your application.

9. Release the shift key (those tags should remain selected)

10. Edit > Copy

- Note: If you only select I/O tags the Edit > Copy feature will not be available, you must include a standard tag within your selected block to be copied.



11. Open Excel and the file, *IO Import Utility.xls*

12. Select the "Paste Version XX Tags Here" worksheet for either RSLogix V13 or V15(V16)

- Note: For other versions you may have to move columns around to align the correct fields

	A	B	C	D	E	F	G	H
1	<b>RSLogix Version 13, Select Cell A3 then Paste</b>					<b>Click here when complete</b>		<b>Clear All</b>
2	<b>P</b>	<b>Tag Name</b>	<b>Alias For</b>	<b>Base Tag</b>	<b>Type</b>	<b>Style</b>	<b>Description</b>	
3								
4								
5								

13. Edit > Paste

	A	B	C	D	E	F	G	H
1	<b>RSLogix Version 13, Select Cell A3 then Paste</b>					<b>Click here when complete</b>		<b>Clear All</b>
2	<b>P</b>	<b>Tag Name</b>	<b>Alias For</b>	<b>Base Tag</b>	<b>Type</b>	<b>Style</b>	<b>Description</b>	
3		MOTOR_STATUS_1	Local:1:I.Data.0	Local:1:I.Data.0	BOOL	Decimal		
4		MOTOR_STATUS_2	Local:1:I.Data.1	Local:1:I.Data.1	BOOL	Decimal		
5		MOTOR_STATUS_3	Local:1:I.Data.2	Local:1:I.Data.2	BOOL	Decimal		
6		MOTOR_STATUS_4	Local:1:I.Data.3	Local:1:I.Data.3	BOOL	Decimal		
7		Local:1:I			AB:1756_DI:I:0			
8		Local:1:I.Fault			DINT	Binary		
9		Local:1:I.Data			DINT	Binary		
10		Local:1:I.Data.0			BOOL	Decimal		
11		Local:1:I.Data.1			BOOL	Decimal		
12		Local:1:I.Data.2			BOOL	Decimal		
13		Local:1:I.Data.3			BOOL	Decimal		
14		Local:1:I.Data.4			BOOL	Decimal		
15								

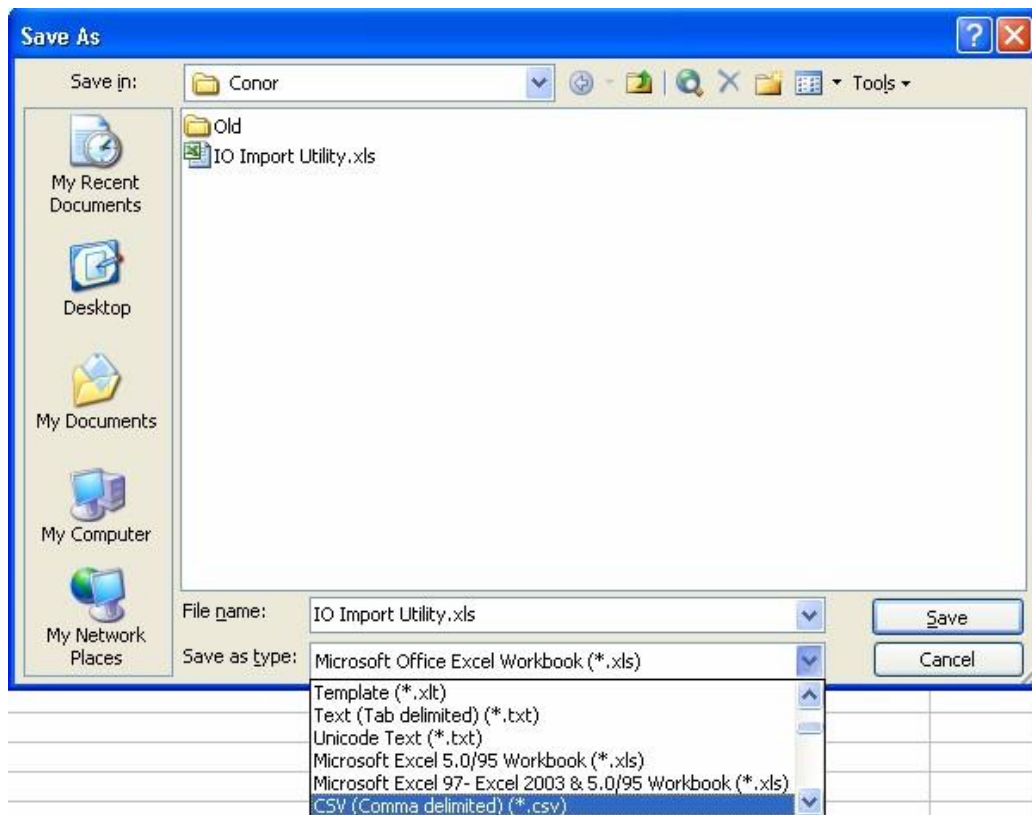


# APPLICATION NOTE

THIS INFORMATION PROVIDED BY AUTOMATIONDIRECT.COM TECHNICAL SUPPORT IS PROVIDED "AS IS" WITHOUT A GUARANTEE OF ANY KIND.

These documents are provided by our technical support department to assist others. We do not guarantee that the data is suitable for your particular application, nor do we assume any responsibility for them in your application.

14. Delete any unnecessary tags
15. Repeat Steps 3 through 14 for any Alias Tags you require (using Sort by: Alias)
16. After you have Copy-Pasted all your I/O and Alias tags, Click on “Click here when complete”
17. If your tags are anything except Controller Scope then you’ll need to generate separate files for each PLC program. C-more will allow you to import multiple CSV files, or you can combine them into one file before importing.
18. Click the “Continue” button to create tags for C-more.
19. File > Save-As > then change file type to CSV and Save
- 20.



21. Select “OK”



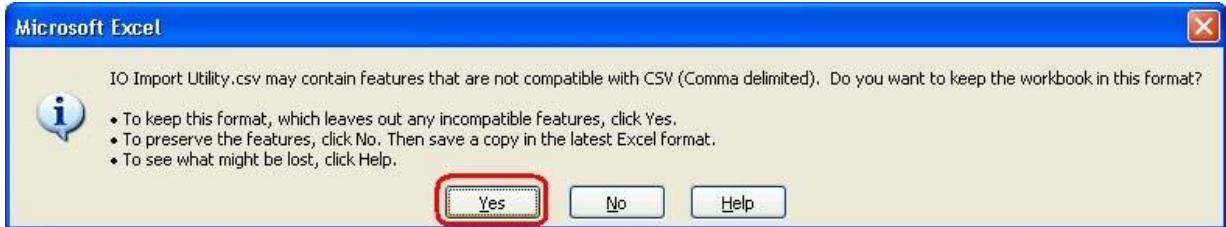


# APPLICATION NOTE

THIS INFORMATION PROVIDED BY AUTOMATIONDIRECT.COM TECHNICAL SUPPORT IS PROVIDED "AS IS" WITHOUT A GUARANTEE OF ANY KIND.

These documents are provided by our technical support department to assist others. We do not guarantee that the data is suitable for your particular application, nor do we assume any responsibility for them in your application.

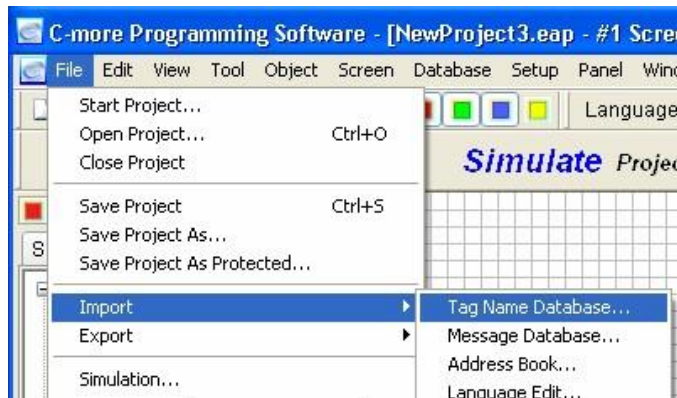
22. Select "Yes"



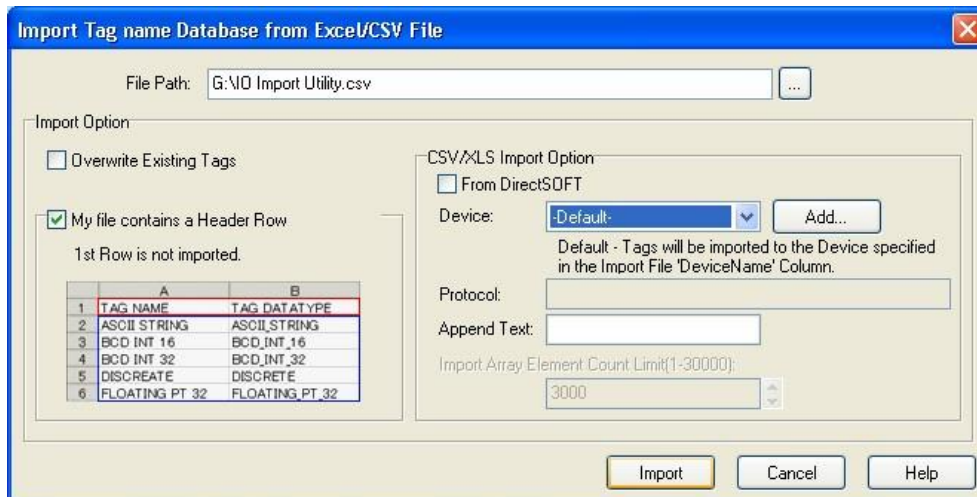
22. Open the C-more Programming Software and load your project or a new project

- Note: Project must use the Allen-Bradley EtherNet/IP Tag-Based driver

23. File > Import > Tag Name Database



24. Standard Import Settings



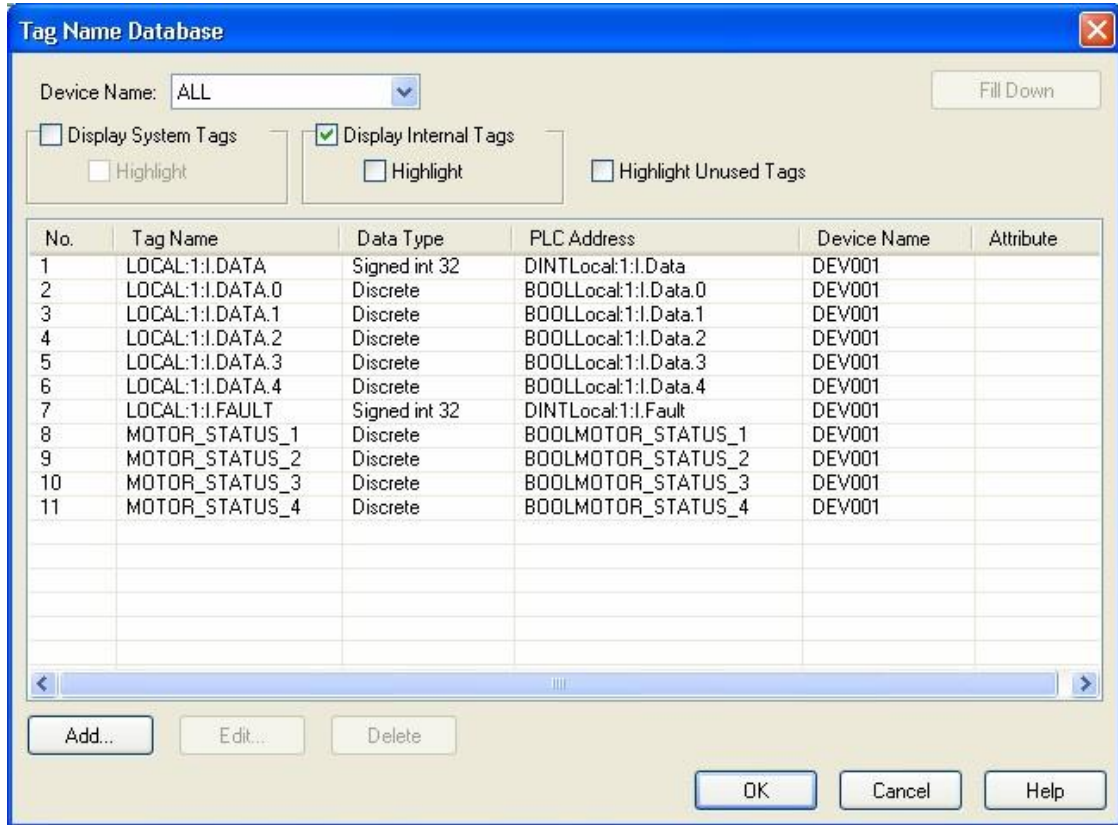


# APPLICATION NOTE

THIS INFORMATION PROVIDED BY AUTOMATIONDIRECT.COM TECHNICAL SUPPORT IS PROVIDED "AS IS" WITHOUT A GUARANTEE OF ANY KIND.

These documents are provided by our technical support department to assist others. We do not guarantee that the data is suitable for your particular application, nor do we assume any responsibility for them in your application.

- 25. Your I/O and Alias Tags are now available in the C-more Tag Database for use with graphic display objects.



Not Supported: Only the PreDefined STRING type of 82 characters in length is supported, Custom Strings lengths are not supported. SINT[] Arrays can be used and they will be zero filled, the ".LEN" field won't automatically be updated by C-more as is the case when using the standard STRING data type.