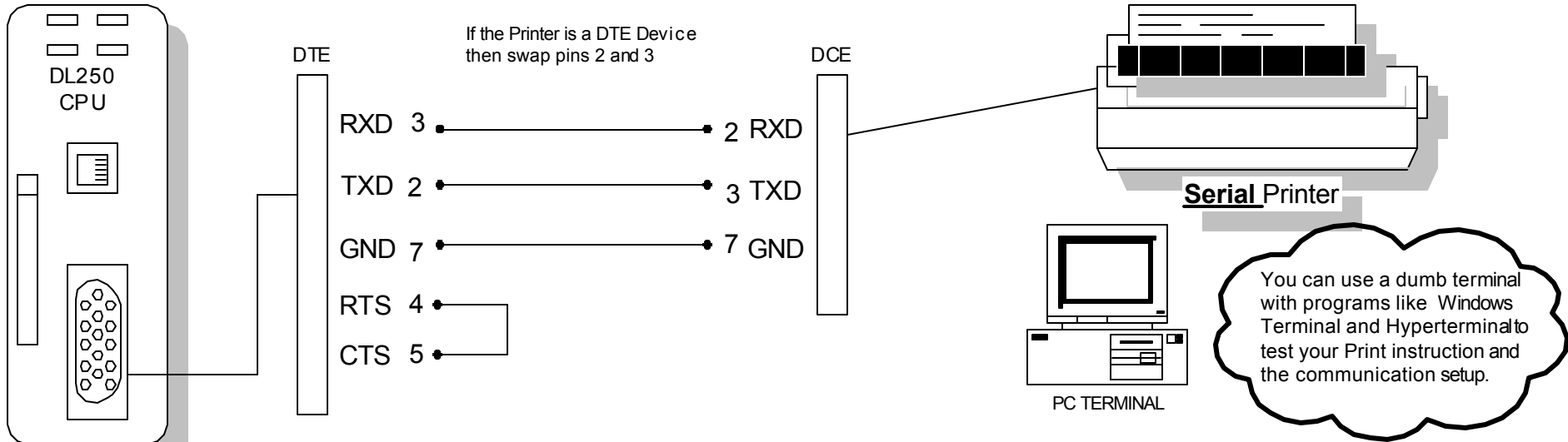




TECHNOTES

Using the 06,250(-1),260 to Communicate to a printer/data terminal

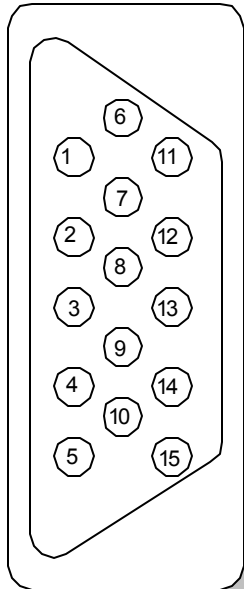
Product group: 205 series
Information Type: Communications
Last revised : 3 Dec, 2002



Port 2
15-pin SVGA
connector

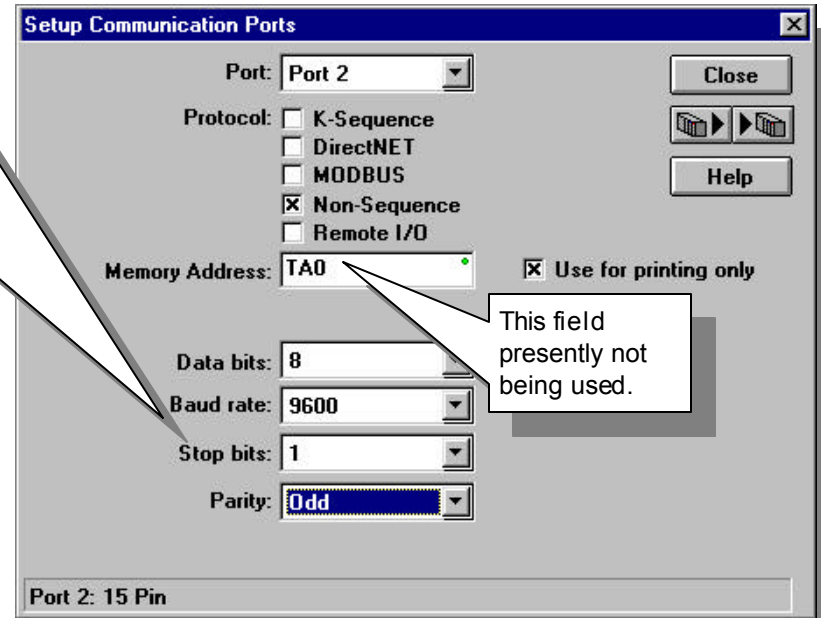
RS-232C / RS-422
communication port

If you are close to a Radio Shack store you can purchase a 15-pin HD male connector. Their part # is 276-1501



Make sure that Port 2 has been configured in the 250 CPU, and that the settings match the port on the communication device being used. (Baud rate, parity, data bits, etc.etc...)

NOTE: In the 205 series the 250 CPU is the only unit that supports the "PRINT" instruction .



Tech Support
250print.vsd