

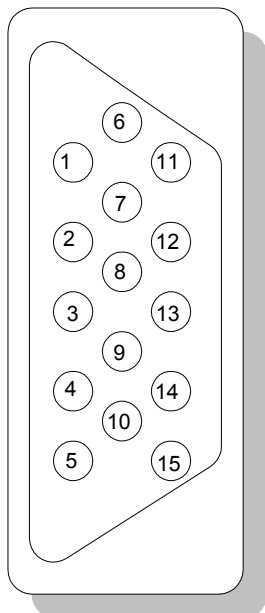


TECHNOTES

Using the D2-250,250-1,260,and D0-06 to Communicate to a printer/data terminal

Product group: 06,205 series
Information Type: Communications
Last revised : 23 Aug, 2002

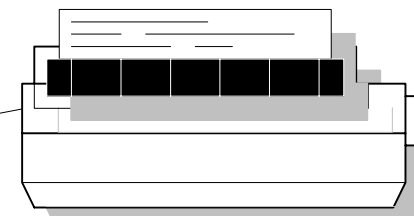
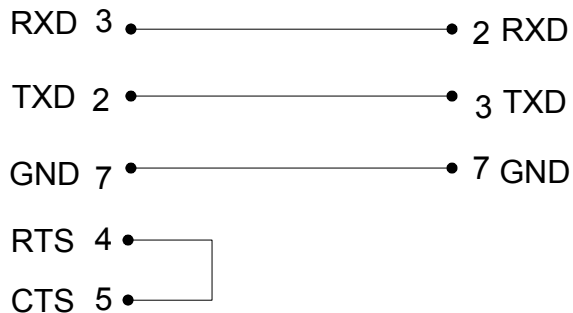
Port 2
15-pin SVGA
connector
RS-232C / RS-422
communication port



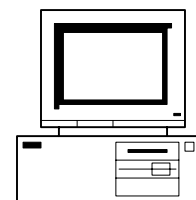
DTE

If the Printer is a DTE Device
then swap pins 2 and 3

DCE



Serial Printer



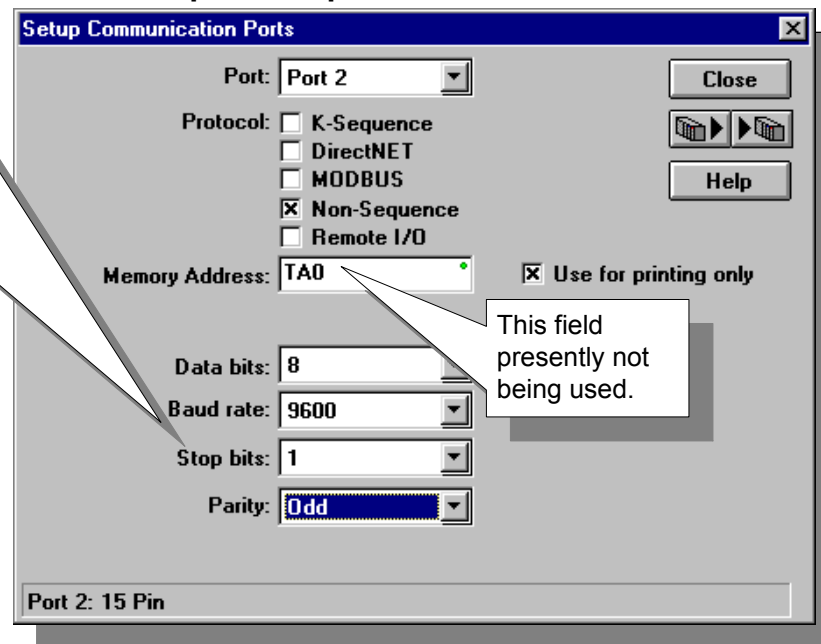
PC TERMINAL

You can use a dumb terminal with programs like Windows Terminal and Hyperterminal to test your Print instruction and the communication setup.

Make sure that Port 2 has been configured in the CPU, and that the settings match the port on the communication device being used. (Baud rate, parity, data bits, etc.etc...)

NOTE:
In the 205 series the 250,250-1,and 260 CPUs are the only units that support the "PRINT" instruction .
All D0-06 PLCs support the "PRINT" instruction

Directsoft port setup screen



Tip:
The D2-DSCBL-1 cable can be used to connect the CPUs to most Serial printers. You may have to use a Null Modem adapter to swap pins 2 and 3 depending on your printer or Terminal device.